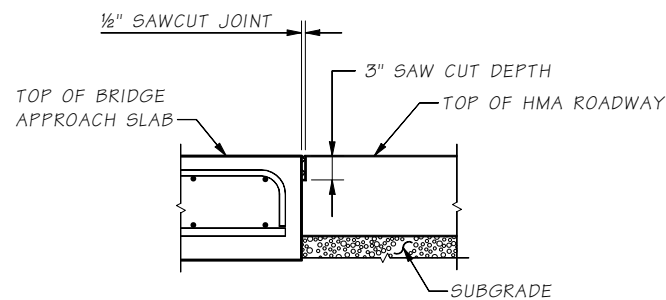


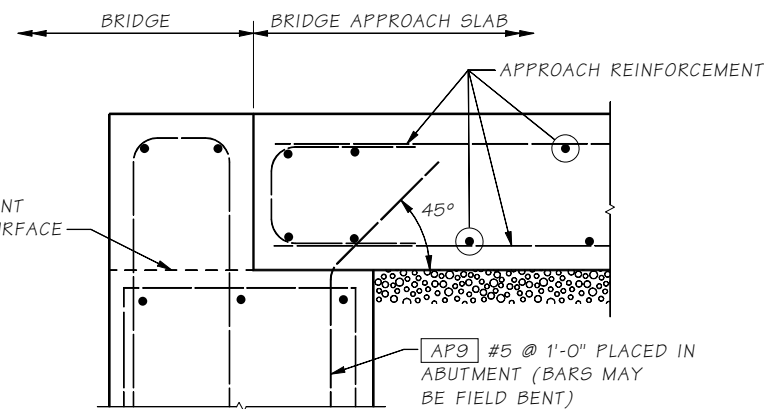
**PCCP ROADWAY DOWEL BAR DETAIL**

INSERT DOWELS PARALLEL TO CENTER LINE ALONG TRANSVERSE CONSTRUCTION JOINT.



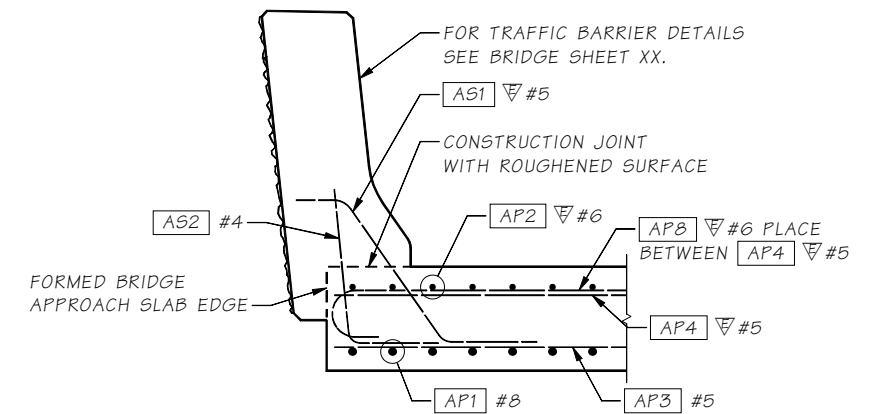
**HMA ROADWAY JOINT DETAIL**

SAWCUT SHALL BE FILLED WITH HOT-POURED COMPONENT IN ACCORDANCE WITH STANDARD SPECIFICATION SECTION 9-04.2(1) AND SEALED IN ACCORDANCE WITH STANDARD SPECIFICATION SECTION 5-05.3(8)B.

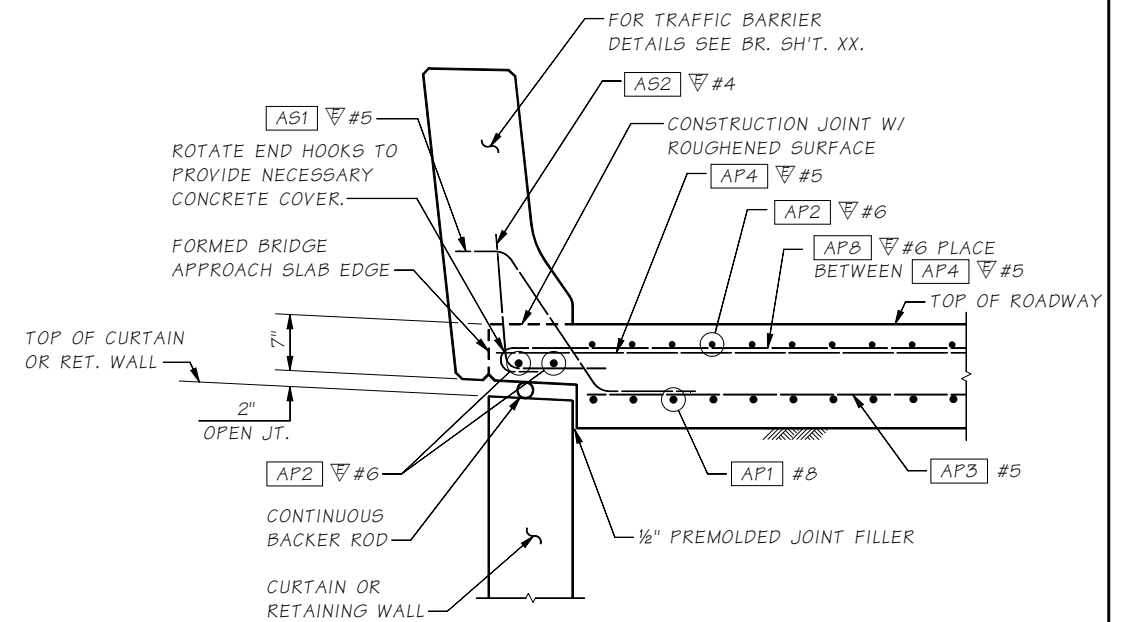


**ANCHOR DETAIL**

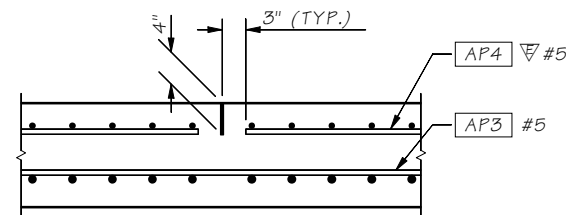
L type abutment



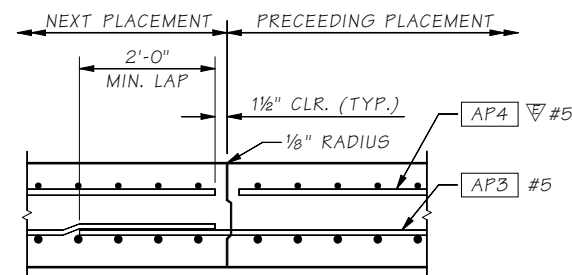
**SECTION A 1**



**SECTION A 1**



**LONGITUDINAL JOINT DETAIL**



**ALTERNATE LONGITUDINAL JOINT DETAIL**

EDGE PRECEEDING PLACEMENT ONLY WITH 1/8" RADIUS.

SR JOB NO. 10.6-A1-2 SHEET

Bridge Design Engr.							
Supervisor							
Designed By							
Checked By							
Detailed By							
Bridge Projects Engr.							
Prelim. Plan By							
Architect/Specialist	DATE	REVISION	BY	APPD			
					REGION NO.	STATE	FED. AID PROJ. NO.
					10	WASH.	
					JOB NUMBER		SHEET NO.
							TOTAL SHEETS

**BRIDGE AND STRUCTURES OFFICE**



**APPROACH SLABS**

BRIDGE APPROACH SLAB DETAILS 2 OF 3