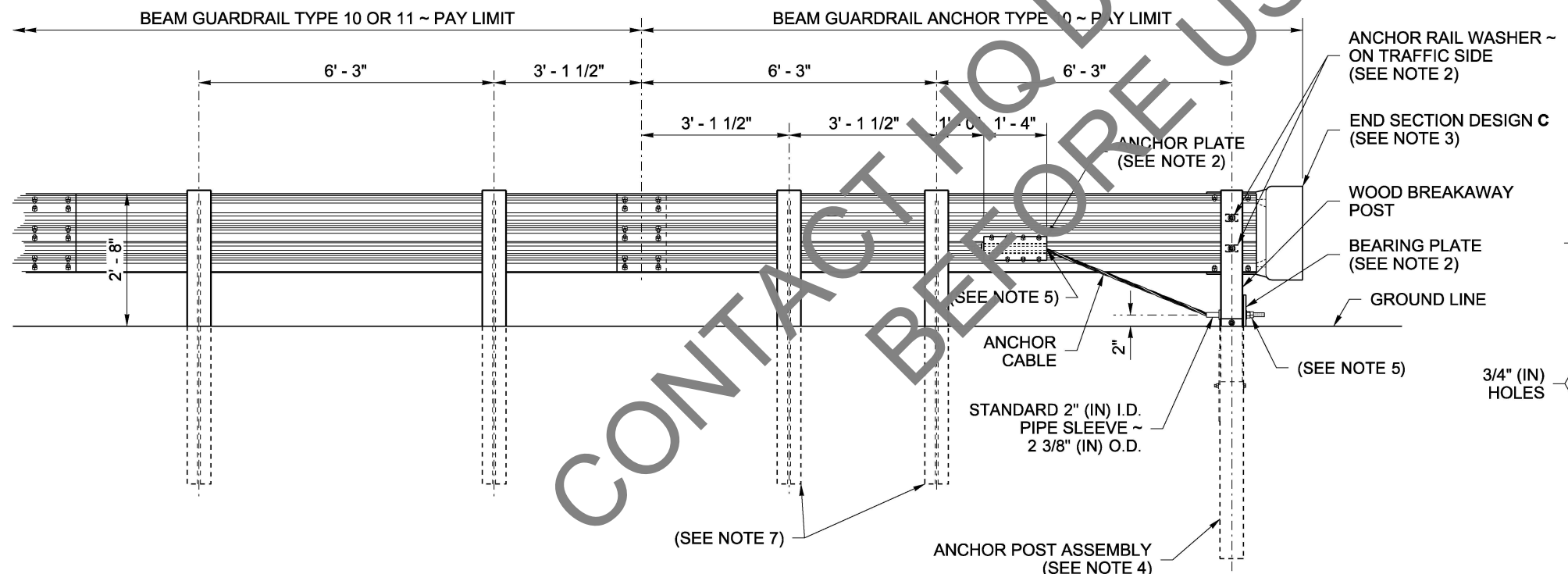


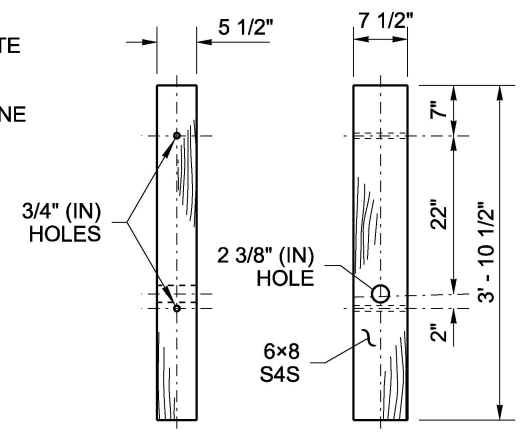
**ELEVATION VIEW  
W-BEAM**



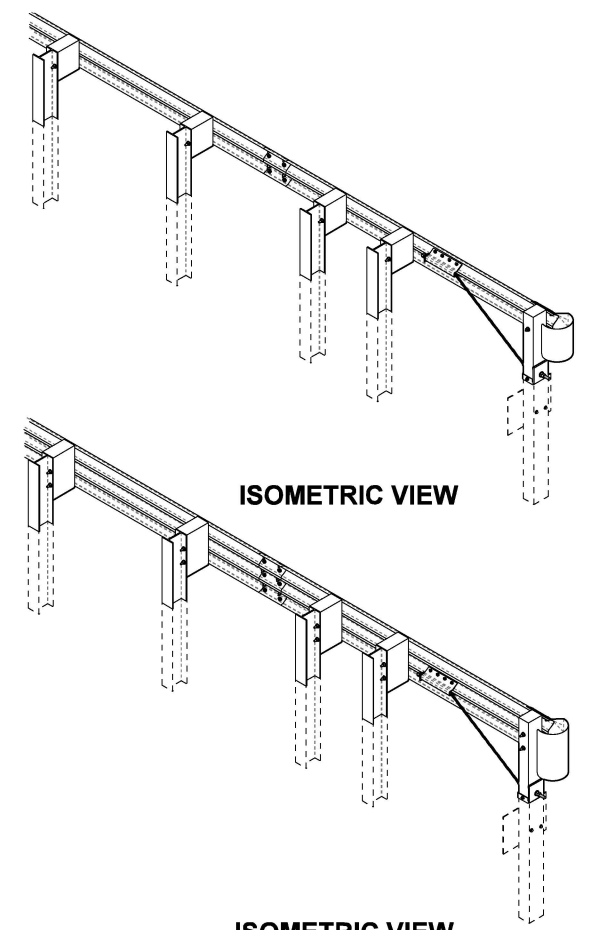
**ELEVATION VIEW  
THRIE BEAM**

**NOTES**

1. For use on the end of guardrail runs when a crashworthy terminal is not required.
2. For additional details not shown, see **Sheet 2** of this Plan.
3. For end section details, see **Standard Plans C-7 and C-7a**.
4. Use details for Wood Breakaway post shown on this plan and components shown on **Standard Plan C-1b**.
5. Fasten the Anchor Cable using two 1" (in) nuts and washer, at both ends of cable. Outside nut shall be torqued against inside nut a minimum of 100 ft.-lbs.
6. Wood blocks shown. Blocks of alternate material may be used. See **Standard Specification, Section 9-16.3(2)**.
7. Posts shall match those of the connecting run: timber or steel.
8. Anchor plate may be constructed from 1/4" (in) plates welded to equal strength and dimensions as shown.
9. Eight 5/8" (in) x 1/2" (in) machine bolts with hex nut and washer. Place washer on face side of rail.




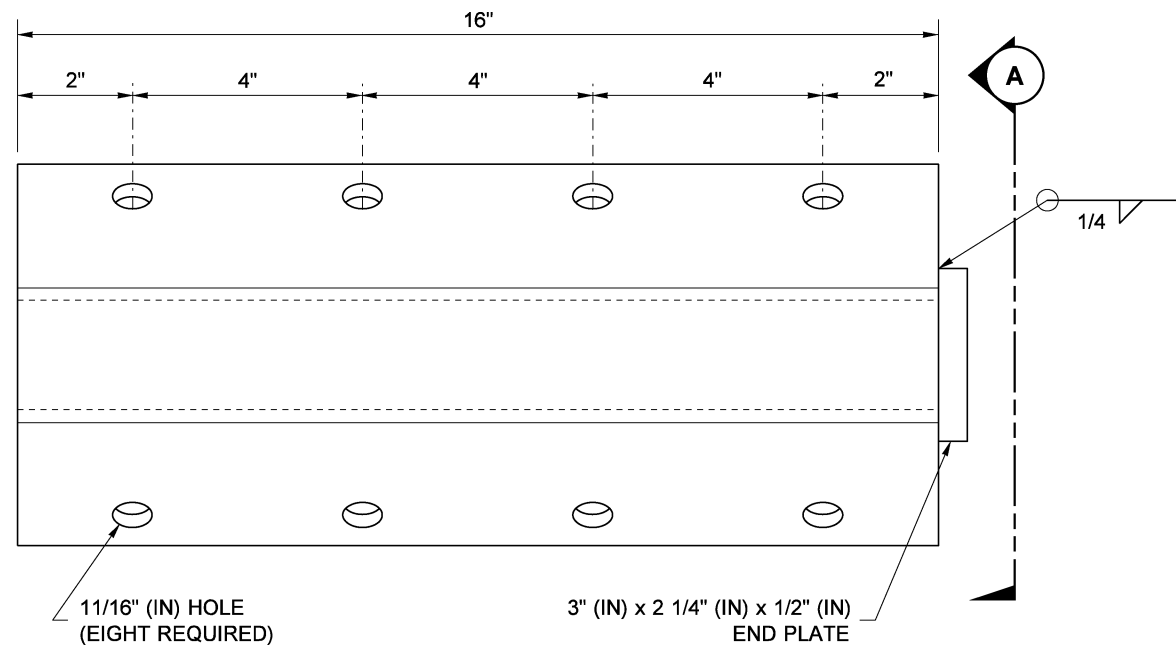
**WOOD BREAKAWAY  
POST DETAIL**



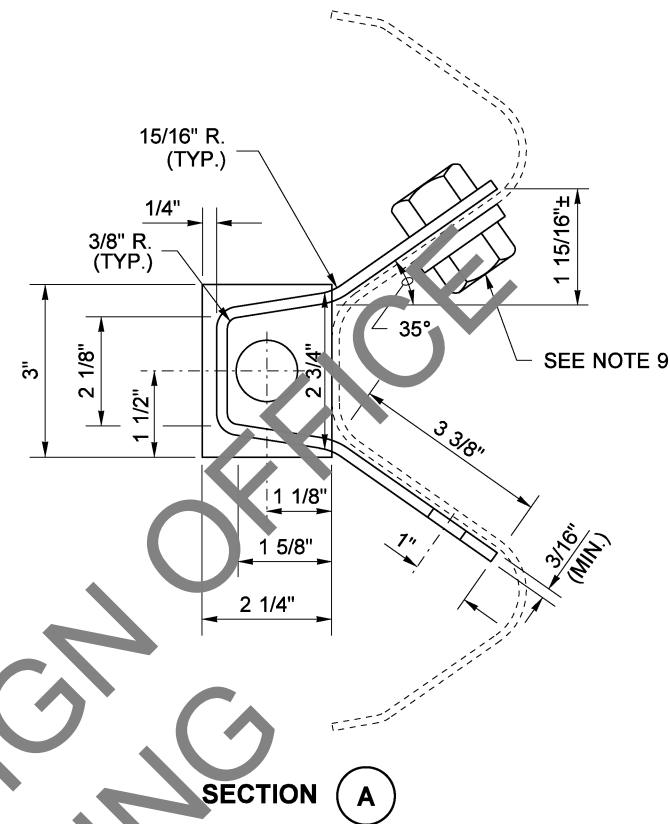
**ISOMETRIC VIEW**

**ISOMETRIC VIEW**

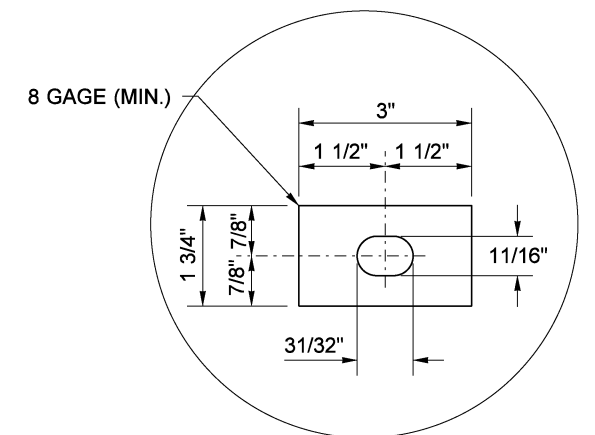
FILE NAME S:\Design R P& S\4-Standards\2-Plan Sheet Library\04-PSL Work in Progress\Std Plan Convert to PSL 2022\TB (c-plans) for 2022\TB-126 (c13.60).dgn				REGION NO. STATE		FED. AID PROJ. NO.				<b>BEAM GUARDRAIL (TYPE 31) ANCHOR TYPE 10</b>		TB-126	
TIME 8:07:40 AM		DATE 7/1/2022		10 WASH		LOCATION NO.						SHEET 1 OF 2 SHEETS	
PLOTTED BY liddelf				JOB NUMBER		CONTRACT NO.		DATE		DATE		P.E. STAMP BOX	
DESIGNED BY				REVISION		DATE		BY		P.E. STAMP BOX		DATE	
ENTERED BY				DATE		BY		DATE		P.E. STAMP BOX		DATE	
CHECKED BY				DATE		BY		DATE		P.E. STAMP BOX		DATE	
PROJ. ENGR.				DATE		BY		DATE		P.E. STAMP BOX		DATE	
REGIONAL ADM.				DATE		BY		DATE		P.E. STAMP BOX		DATE	



ELEVATION



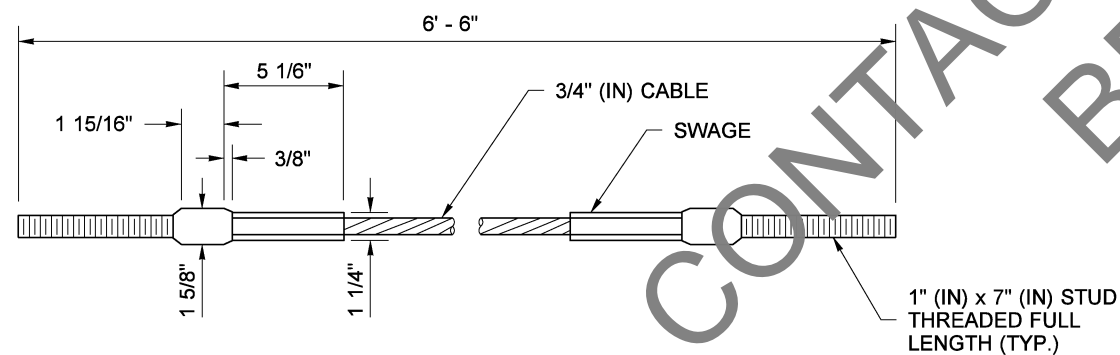
SECTION A



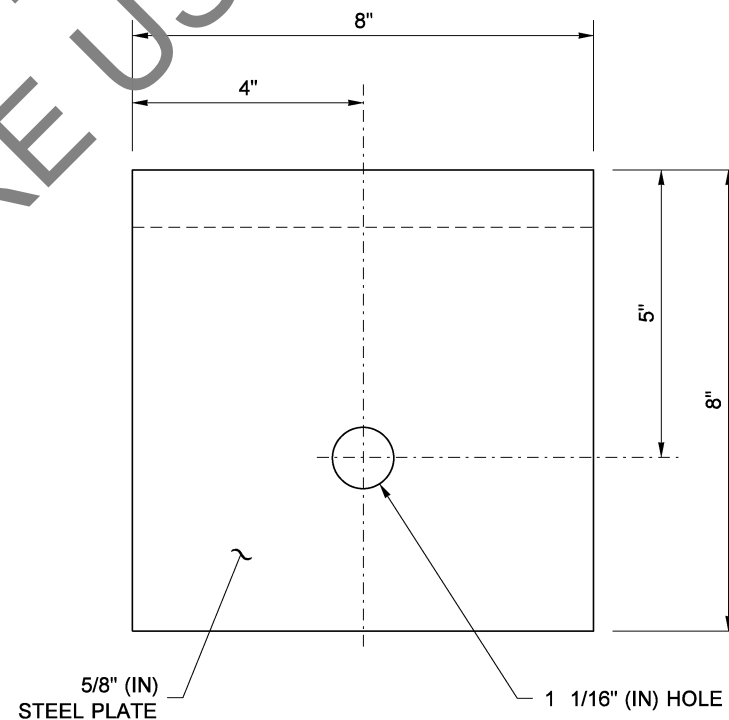
ANCHOR RAIL WASHER

ANCHOR PLATE  
(SEE NOTE 8)

3/16" (IN) x 1" (IN) x 8" (IN)  
PLATE ~ TACK WELDED TO  
5/8" (IN) PLATE



ANCHOR CABLE



BEARING PLATE

FILE NAME S:\Design R P& S\4-Standards\2-Plan Sheet Library\04-PSL Work in Progress\Std Plan Convert to PSL 2022\TB (c-plans) for 2022\TB-126 (c23.60).dgn				REGION NO. STATE		FED. AID PROJ. NO.				<b>BEAM GUARDRAIL (TYPE 31) ANCHOR TYPE 10</b>		TB-126	
TIME	8:05:43 AM			10	WASH							SHEET 2 OF 2 SHEETS	
DATE	7/1/2022			JOB NUMBER		LOCATION NO.		DATE		DATE			
PLOTTED BY	liddelf			CONTRACT NO.				P.E. STAMP BOX		P.E. STAMP BOX			
DESIGNED BY													
ENTERED BY													
CHECKED BY													
PROJ. ENGR.													
REGIONAL ADM.				REVISION		DATE BY							