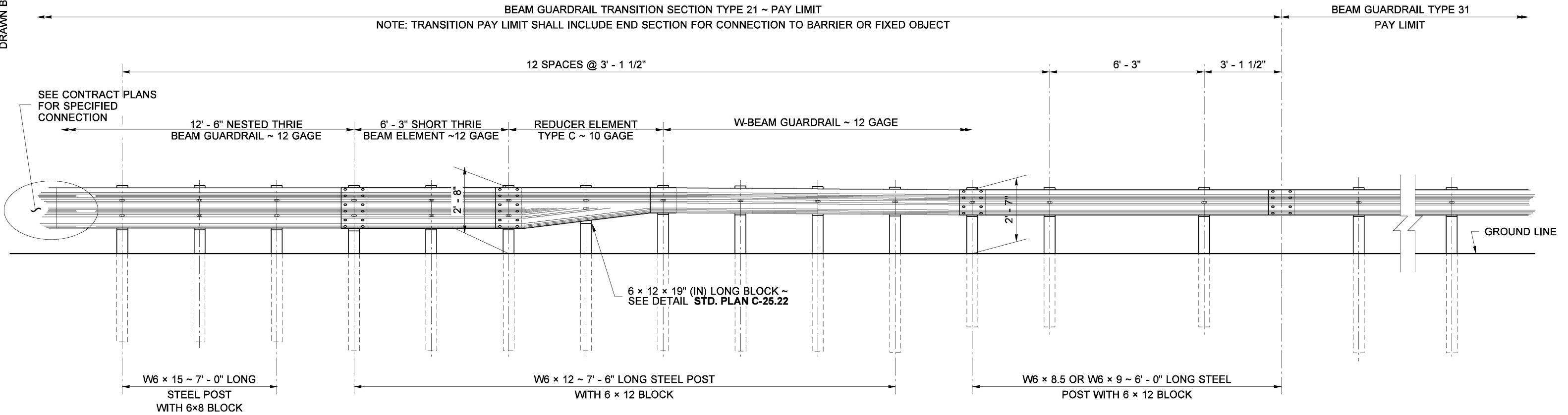


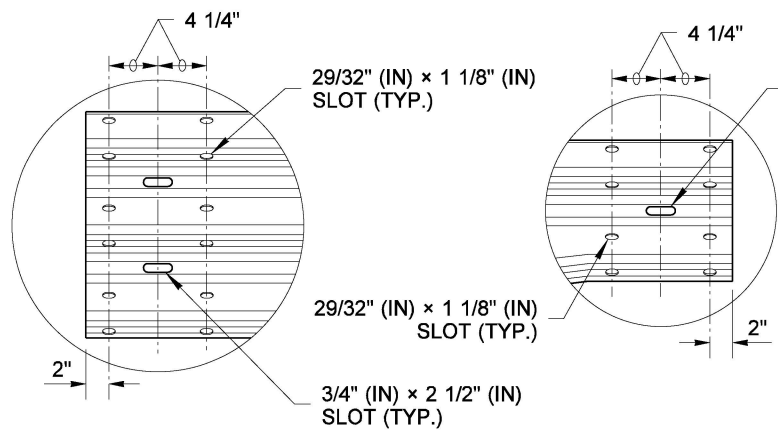
DRAWN BY: FERN LIDDELL

**NOTES**

1. This guardrail transition is for connection to a vertical concrete shape, a single slope, or a safety-shape barrier. The toe of the single slope and the safety-shape barrier shall be tapered or the barrier blocked out so that the toe of the barrier does not project past the face of the approach guardrail.
2. See **Standard Plan C-24.10** for details regarding connection to bridge rail or traffic barrier.
3. For details of typical components, see **Standard Plans C-1b** and **C-20.10**.
4. See **Standard Plans A-50.10** or **A-50.40** for beam guardrail transition grading details at bridge ends.

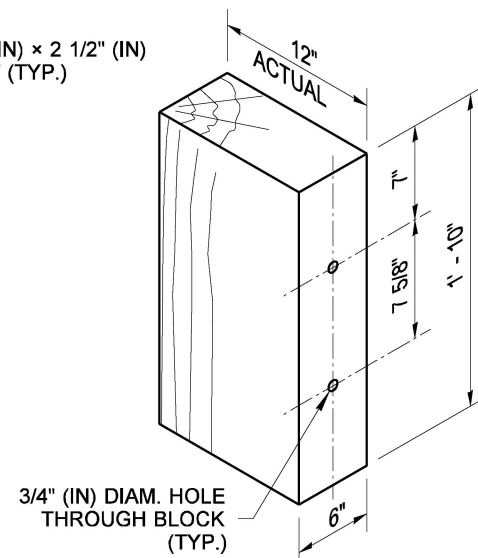


**ELEVATION**

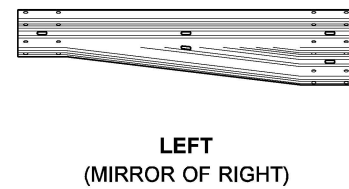


**DETAIL A**

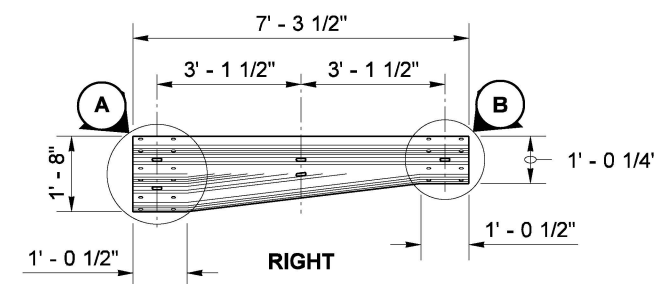
**DETAIL B**



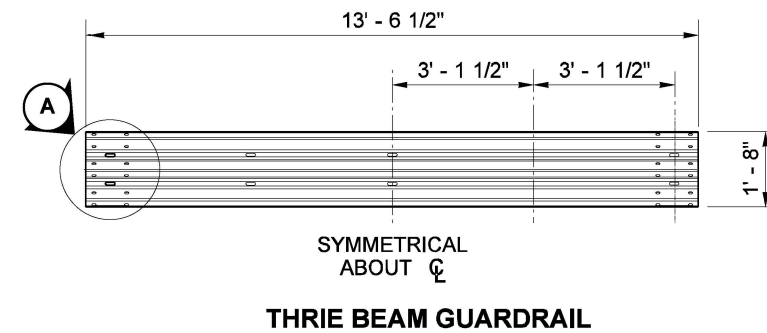
**THRIE BEAM WOOD BLOCK**



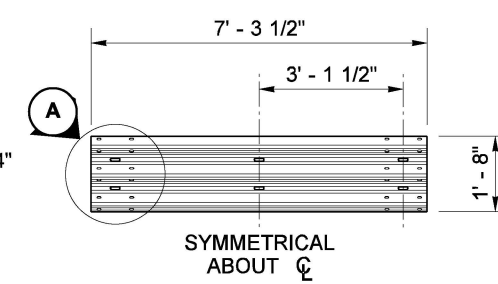
**LEFT (MIRROR OF RIGHT)**



**REDUCER ELEMENT TYPE C**



**THRIE BEAM GUARDRAIL**



**SHORT THRIE BEAM ELEMENT**



Aug 17, 2021

**BEAM GUARDRAIL (TYPE 31)  
TRANSITION SECTION  
TYPE 21  
STANDARD PLAN C-25.20-07**

SHEET 1 OF 1 SHEET

APPROVED FOR PUBLICATION

*[Signature]*

Aug 20, 2021

STATE DESIGN ENGINEER



Washington State Department of Transportation