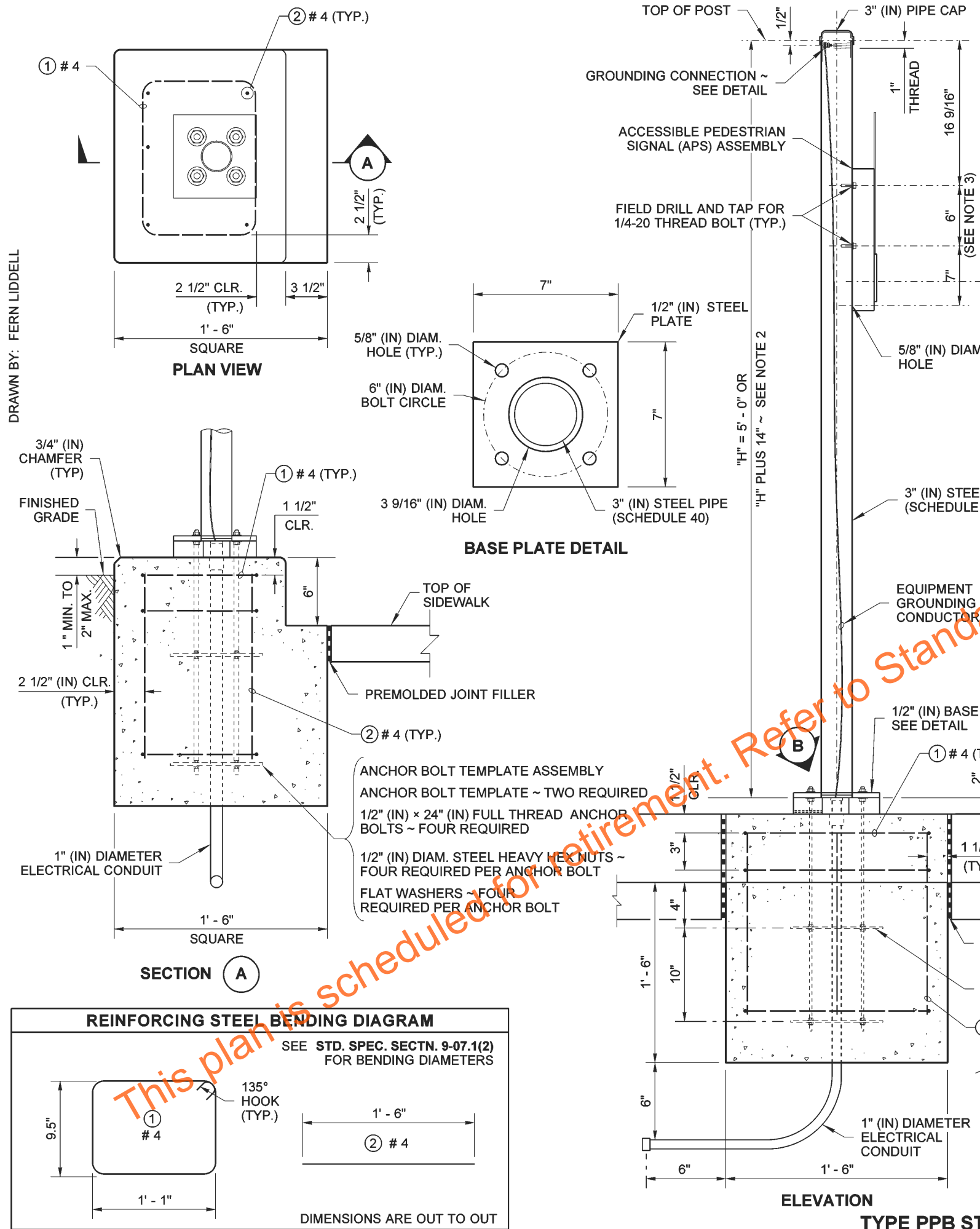
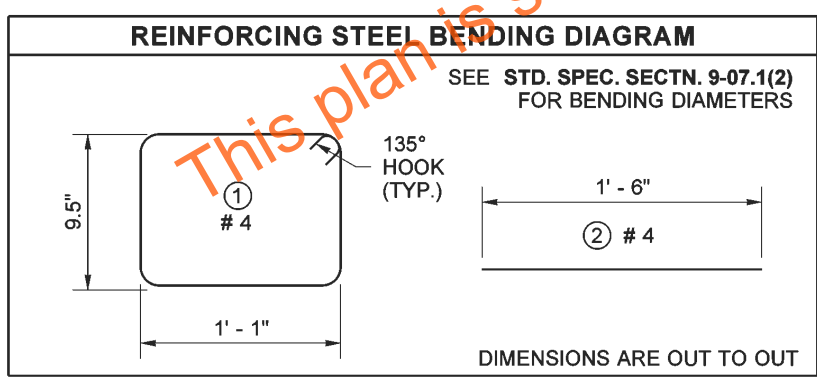
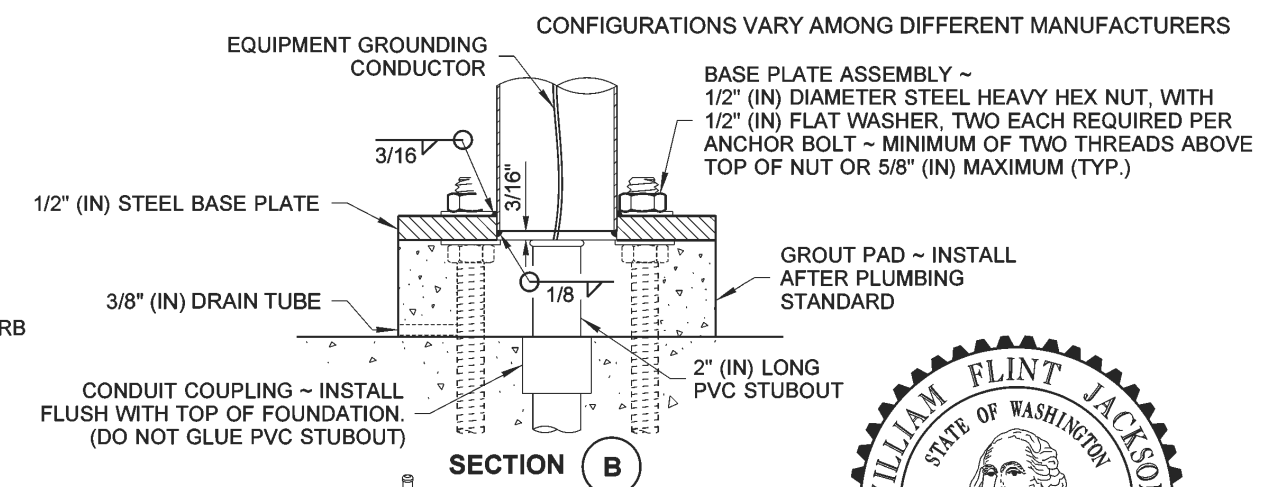
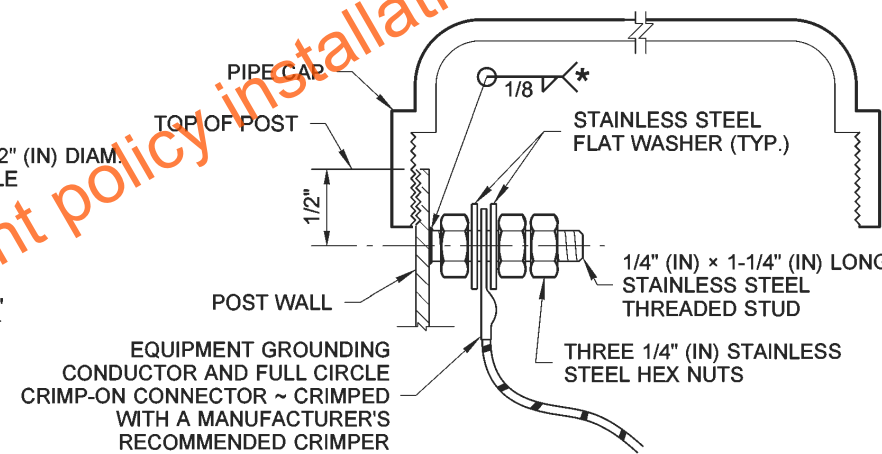
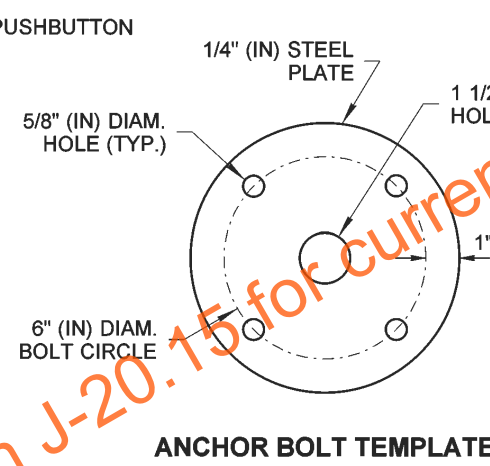


DRAWN BY: FERN LIDDELL



NOTES

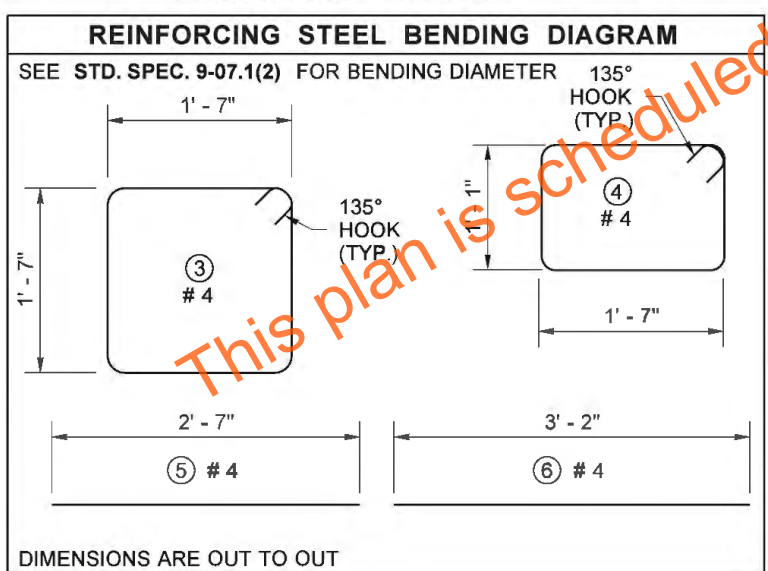
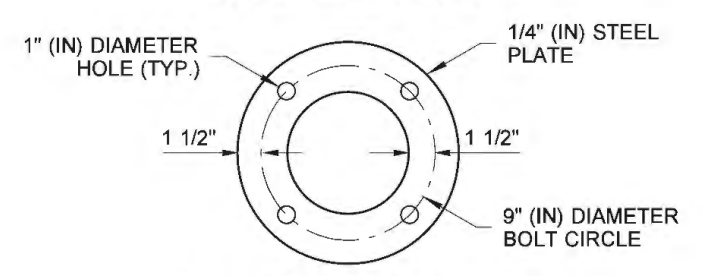
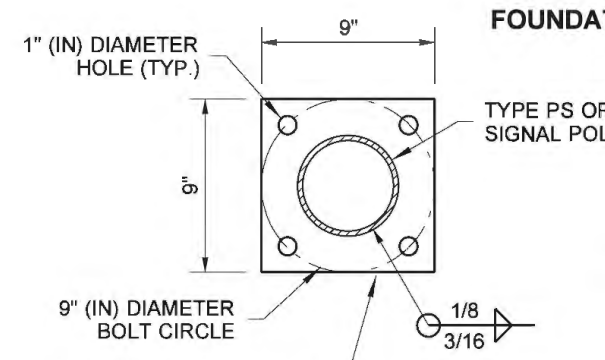
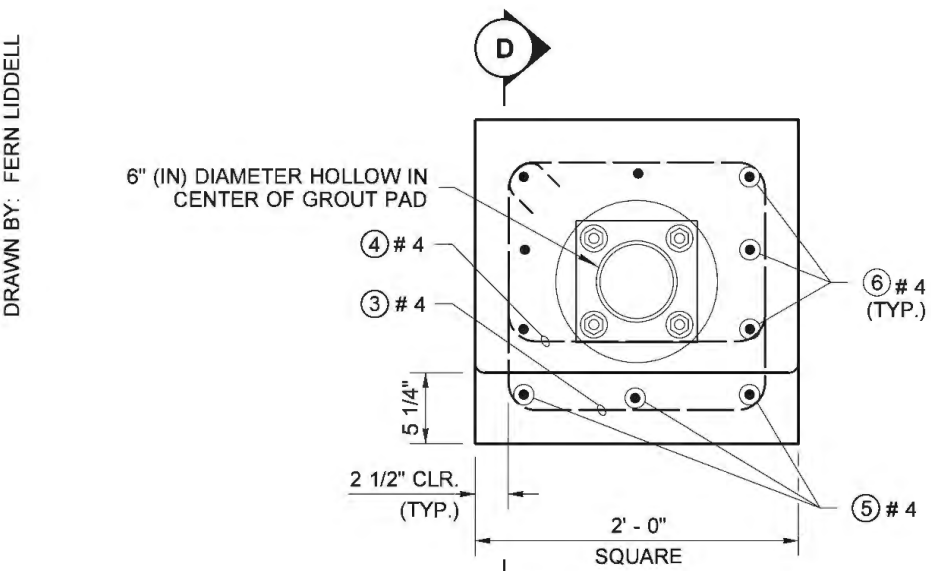
1. See **Standard Plan J-20.26** for Accessible Pedestrian Pushbutton details.
2. Where shown in the plans, install plaque (R10-32P) "PUSH BUTTON FOR 2 SECONDS FOR EXTRA CROSSING TIME" above the Accessible Pedestrian Signal (APS) assembly. Add 14" (in) to the PPB post height to accommodate plaque and leave a 2" (in) space between signs.
3. Mounting distances vary between manufacturers. See manufacturers recommendations for mounting information.
4. Junction Box serving the Standard shall preferably be located 5' - 0" (10' - 0" Max.) from the Standard.
5. Supplemental Grounding Conductor shall be non-insulated #4 AWG stranded copper and shall be clamped to vertical rebar with a connector suitable for use embedded in concrete: Provide 3' - 0" min. slack. Attach to pole grounding stud with a full circle crimp-on connector (crimped with a manufacturer recommended crimper).
6. Two button installation may require adaptor(s).



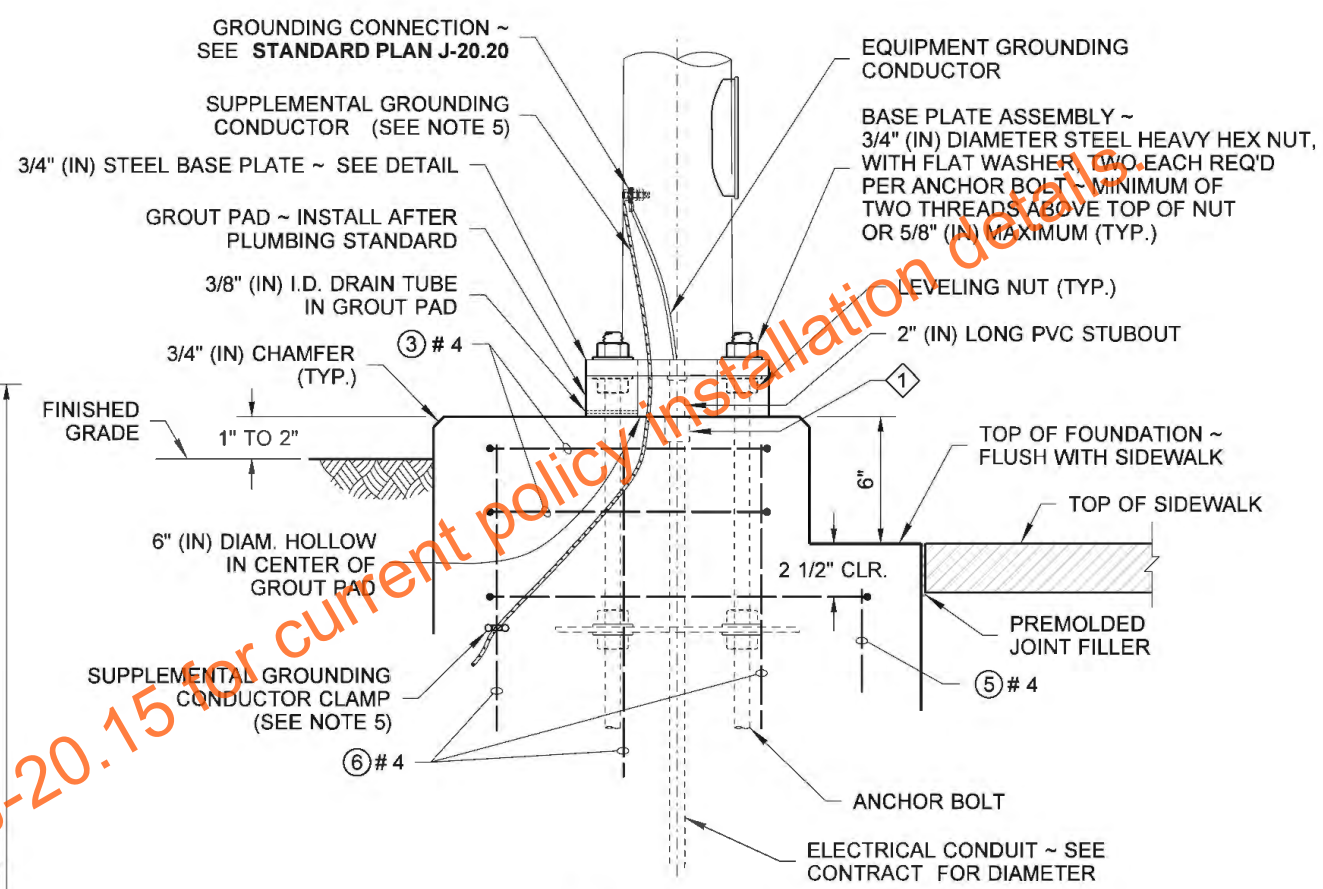
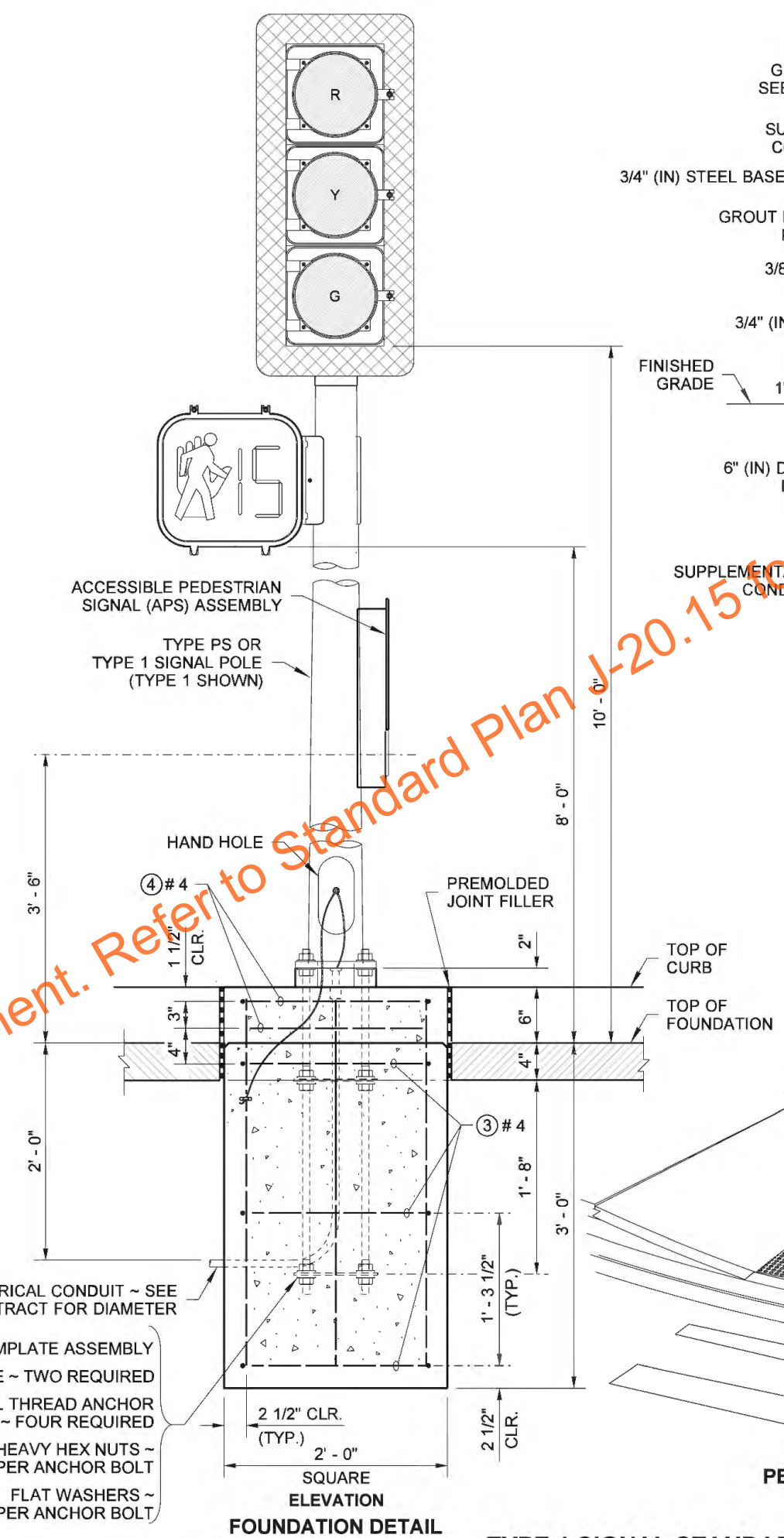
Jackson, Flint
 Jul 29 2019 2:54 PM
ACCESSIBLE PEDESTRIAN PUSHBUTTON WITH CURB BASE
STANDARD PLAN J-20.11-03
 SHEET 1 OF 2 SHEETS

APPROVED FOR PUBLICATION
 Roark, Steve
 Jul 31 2019 12:14 PM
 STATE DESIGN ENGINEER
 Washington State Department of Transportation

DRAWN BY: FERN LIDDELL



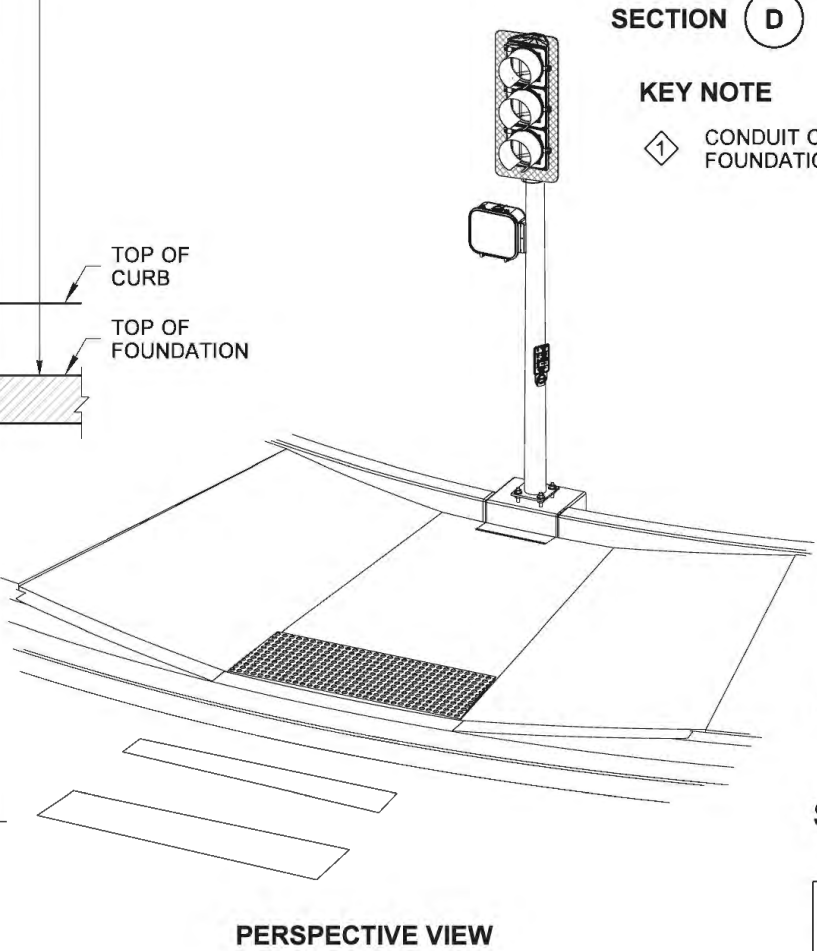
REINFORCING STEEL QUANTITIES LIST				
MARK	③	④	⑤	⑥
QTY.	3	2	3	7



SECTION D

KEY NOTE

① CONDUIT COUPLING ~ INSTALL FLUSH WITH TOP OF FOUNDATION. (DO NOT GLUE PVC STUBOUT)



Jackson, Flint
Jul 29 2019 2:54 PM

ACCESSIBLE PEDESTRIAN PUSHBUTTON WITH CURB BASE

STANDARD PLAN J-20.11-03

SHEET 2 OF 2 SHEETS

APPROVED FOR PUBLICATION

Roark, Steve
Jul 31 2019 12:14 PM

STATE DESIGN ENGINEER

Washington State Department of Transportation