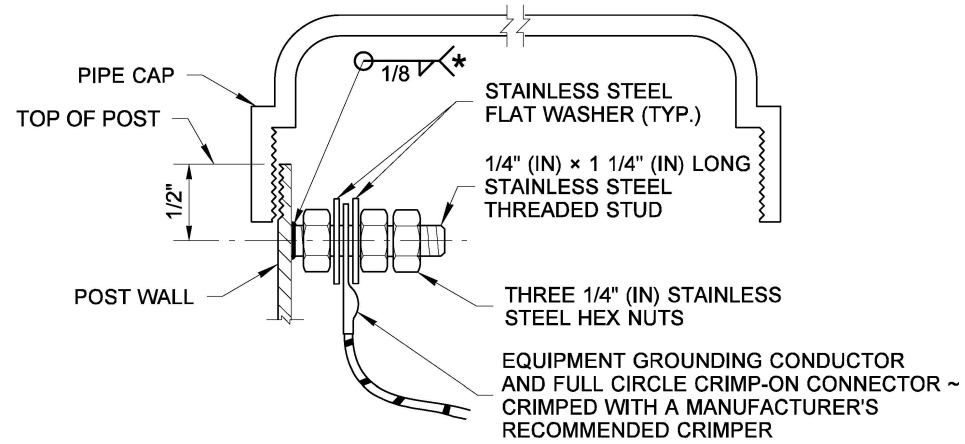
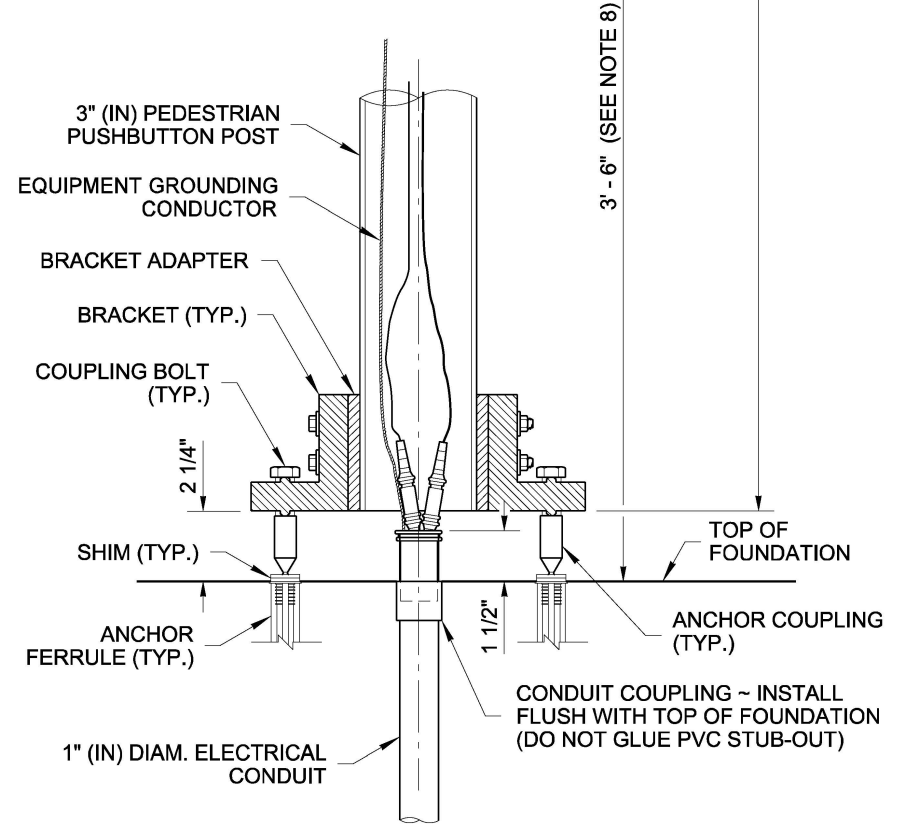


POST DETAIL

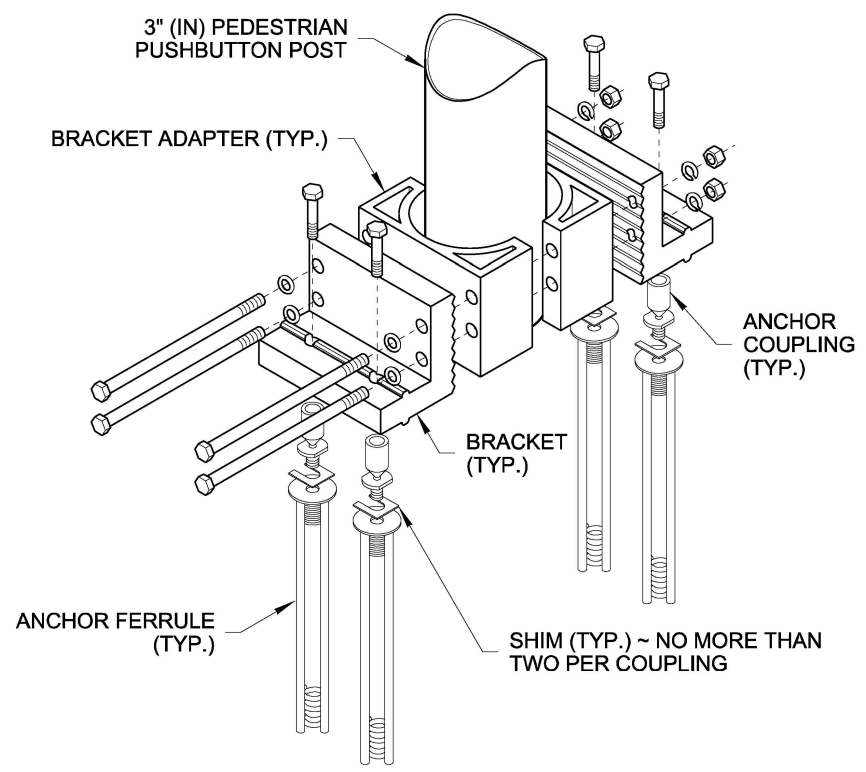


GROUNDING CONNECTION DETAIL

* WELD STUD TO POLE WALL TO MAXIMUM EXTENT POSSIBLE ~ 1/2" (IN) MINIMUM WELD
 CONFIGURATIONS VARY AMONG DIFFERENT MANUFACTURERS (SHOWN EXPLODED FOR CLARITY)



DETAIL A



**EXPLODED VIEW
 BREAKAWAY BASE CONNECTOR
 (SEE NOTE 1)**

NOTES:

1. See **Standard Specification Section 9-06.16** for Breakaway Base Connection details. Dimensions for the parts used to assemble the base connections are intentionally not shown. Base connections are patented manufactured products that are in compliance with NCHRP 350 crash test criteria. The Breakaway Base Connection details are only shown on this plan to illustrate how parts are assembled.
2. See **Standard Plan J-20.26** for Accessible Pedestrian Pushbutton (APS) details; Audible Information Device (AID) pedestrian pushbutton similar.
3. Secure conductor in adjacent Junction Box per detail in **Standard Plan J-28.70**.
4. Where shown in the plans, install plaque (R10-32P) "PUSH BUTTON FOR 2 SECONDS FOR EXTRA CROSSING TIME" above the Accessible Pedestrian Signal (APS) assembly. Add 14" (in) to post height to accommodate plaque and leave a 2" (in) space between signs.
5. Mounting distances vary between manufacturers. See manufacturer's recommendations for mounting information.
6. Junction Box serving the Standard shall preferably be located 5' - 0" (10' - 0" Max.) from the Standard.
7. Two button installation may require adaptor(s) or extension(s).
8. Pushbutton height is measured from the walking surface to the center of the actual pushbutton circle.



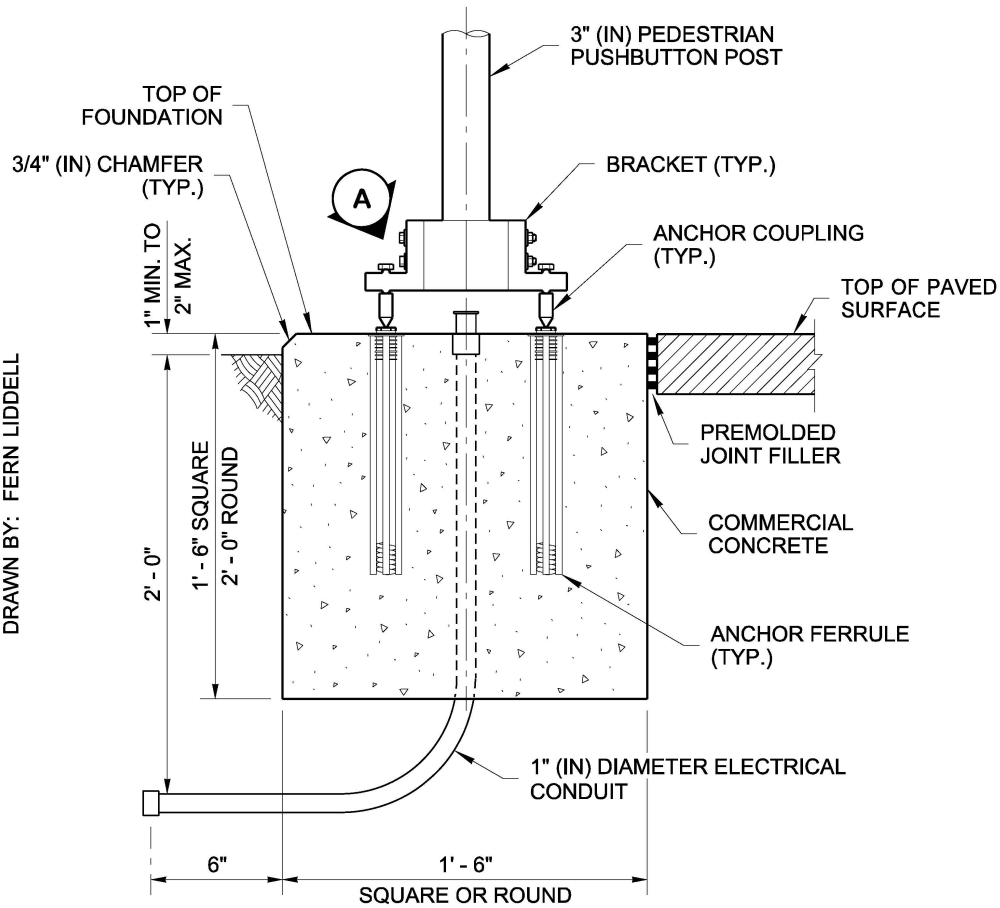
Jun 20, 2024

**PEDESTRIAN PUSHBUTTON
 (PPB) POST
 AND FOUNDATION
 STANDARD PLAN J-20.15-04**

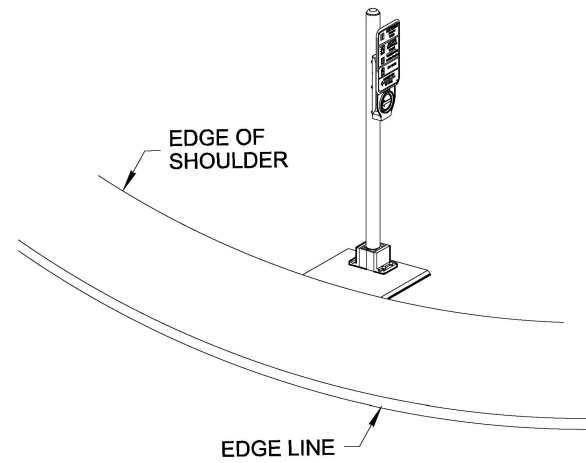
SHEET 1 OF 2 SHEETS

APPROVED FOR PUBLICATION
Mark A. Daines Jun 21, 2024
 STATE DESIGN ENGINEER
 Washington State Department of Transportation

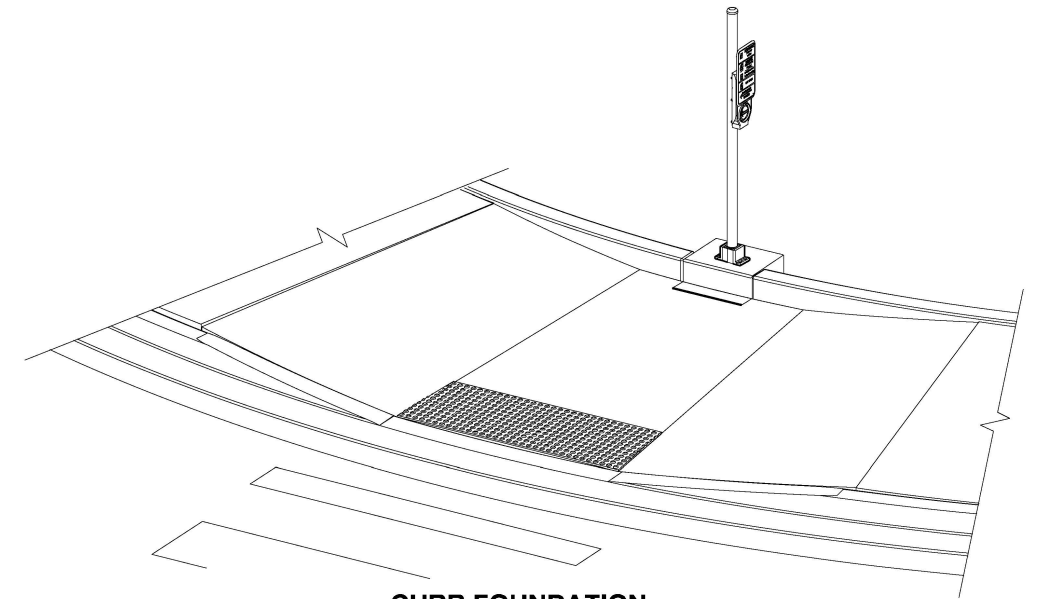
DRAWN BY: FERN LIDDELL



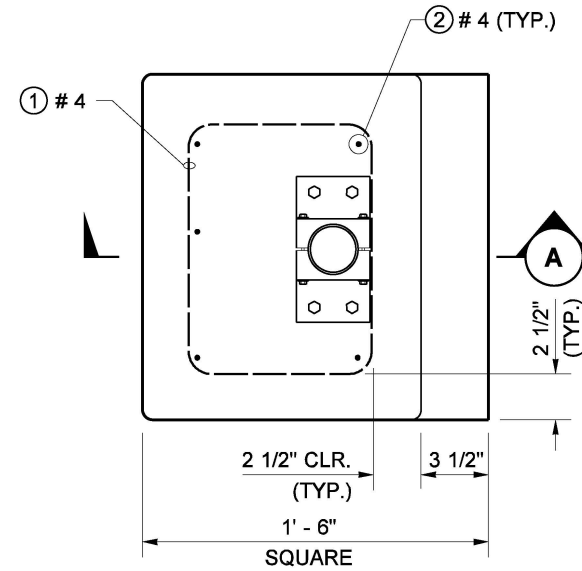
FLAT FOUNDATION DETAIL ELEVATION VIEW



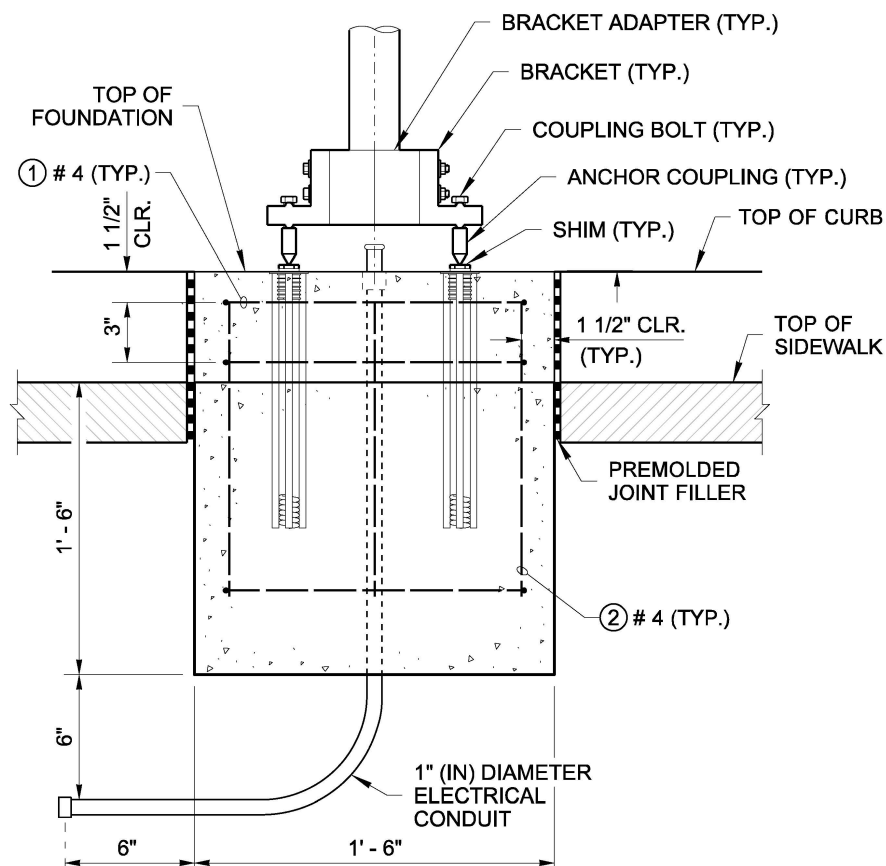
FLAT FOUNDATION PERSPECTIVE VIEW



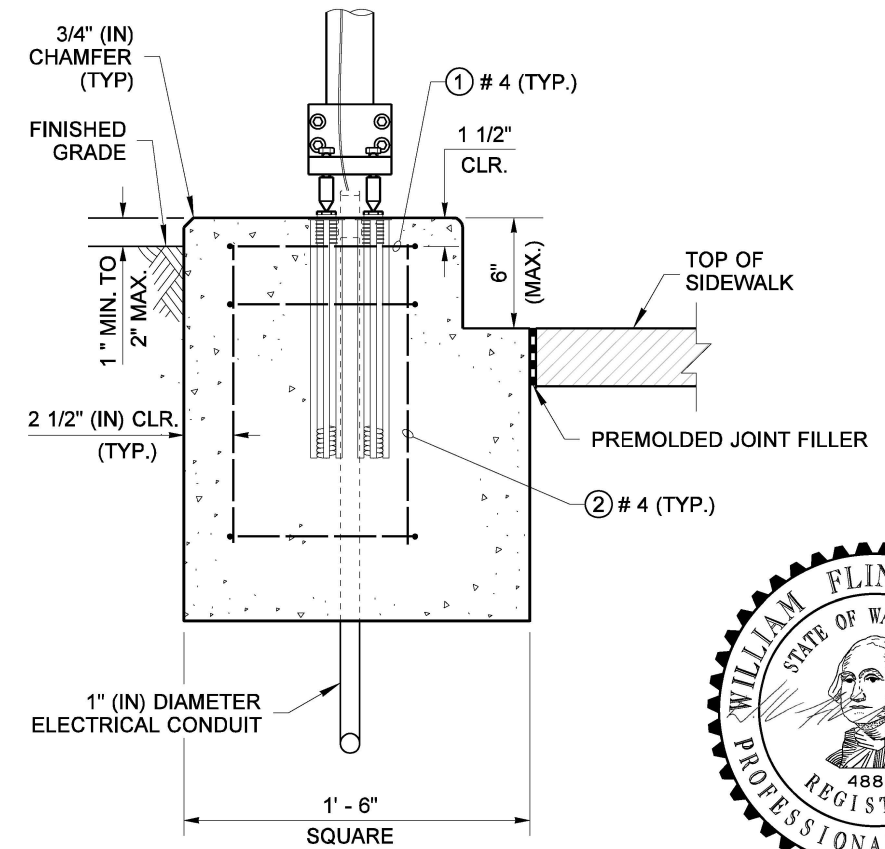
CURB FOUNDATION PERSPECTIVE VIEW (SKIRT NOT SHOWN)



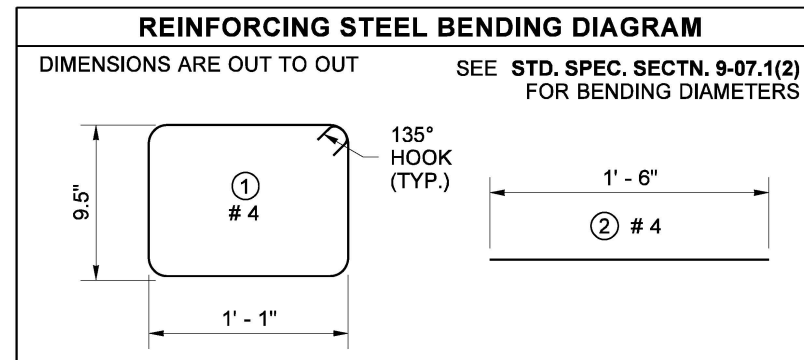
CURB FOUNDATION PLAN VIEW



CURB FOUNDATION DETAIL ELEVATION VIEW



SECTION A



Jun 20, 2024

PEDESTRIAN PUSHBUTTON (PPB) POST AND FOUNDATION STANDARD PLAN J-20.15-04

SHEET 2 OF 2 SHEETS

APPROVED FOR PUBLICATION

Mark A. Daines Jun 21, 2024

STATE DESIGN ENGINEER

