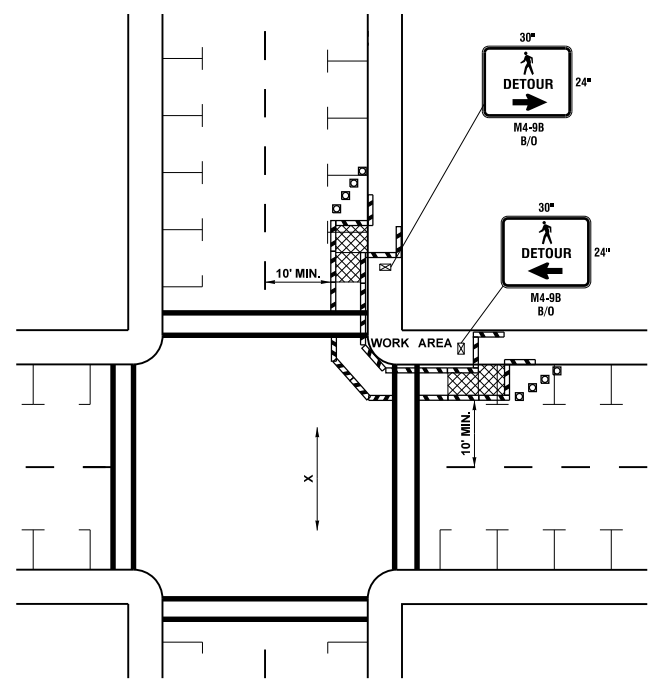
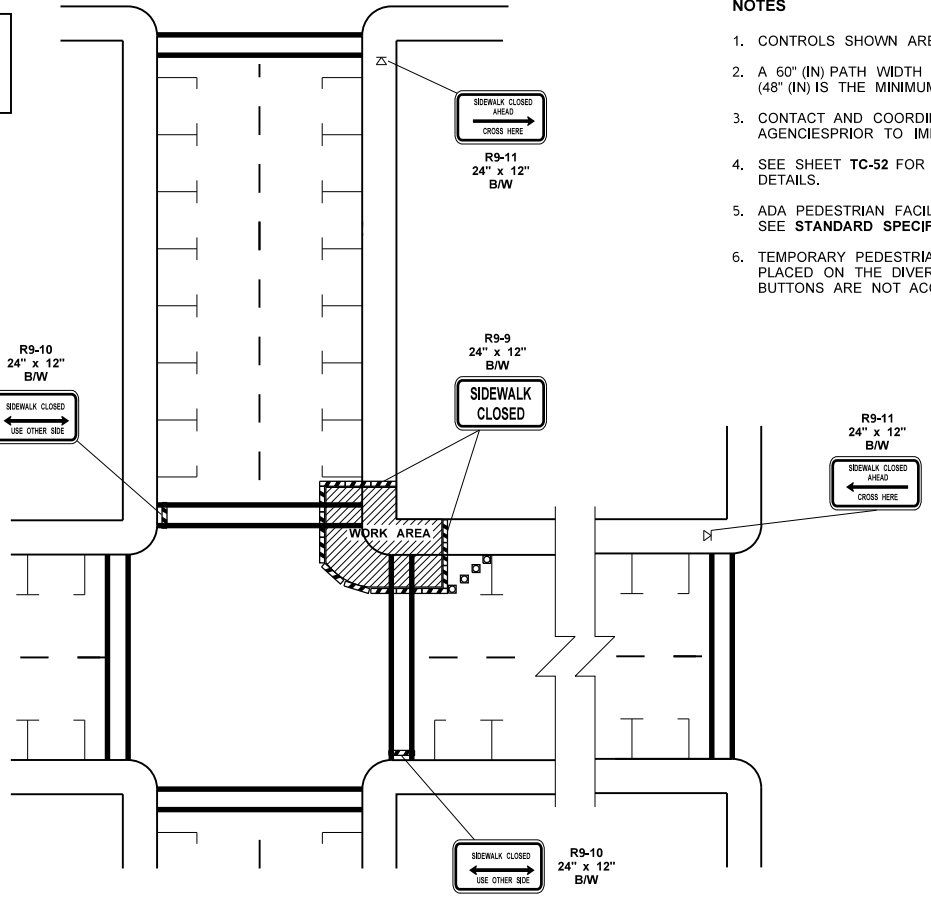


**NO PARKING** R8-3  
24" x 30"  
R/W

INSTALL ON TYPE 2 BARRICADES THROUGHOUT THE WORK AREA  
24 HOURS PRIOR TO IMPLEMENTING TRAFFIC CONTROL.  
PRIOR NOTIFICATION OF LOCAL LAW ENFORCEMENT REQUIRED.



**SIDEWALK DIVERSION**



**SIDEWALK DETOUR**

**NOTES**

1. CONTROLS SHOWN ARE FOR PEDESTRIAN TRAFFIC ONLY.
2. A 60" (IN) PATH WIDTH SHOULD BE MAINTAINED (48" (IN) IS THE MINIMUM).
3. CONTACT AND COORDINATE IMPACTED TRANSIT AGENCIES PRIOR TO IMPLEMENTING ANY CLOSURES.
4. SEE SHEET TC-52 FOR TEMPORARY PEDESTRIAN RAMP DETAILS.
5. ADA PEDESTRIAN FACILITIES MUST BE MAINTAINED. SEE STANDARD SPECIFICATION 1-10.2(1)B.
6. TEMPORARY PEDESTRIAN PUSH BUTTONS SHALL BE PLACED ON THE DIVERTED PATH WHEN EXISTING BUTTONS ARE NOT ACCESSIBLE TO PEDESTRIANS.

**LEGEND**

- ⊠ TEMPORARY SIGN LOCATION
- ⊠ CHANNELIZING DEVICES
- ▨ PEDESTRIAN CHANNELIZING DEVICES
- ▨ TEMPORARY PEDESTRIAN RAMP FOR SIDEWALKS

**INTERSECTION PEDESTRIAN TRAFFIC CONTROL**

NOT TO SCALE

FILE NAME: S:\Design_R_P&S\4-Standards\2-Plan Sheet Library\01-Published_PSL\TC Work Zone Traffic Control\TC-16 Intersection Pedestrian Traffic Control\TC-16.dgn		REGION NO.	STATE	FED.AID PROJ.NO.	Washington State Department of Transportation	Plot 1
TIME: 11:26:56 AM	DATE: 1/9/2018	WASH				PLAN REF NO TC16
PLOTTED BY: lldelf	DESIGNED BY:	JOB NUMBER:	CONTRACT NO.:	LOCATION NO.:		SHEET
ENTERED BY:	CHECKED BY:	PROJ. ENGR.:	REGIONAL ADM.:	REVISION:	DATE:	OF
						SHEETS

**PEDESTRIAN CONTROL AND PROTECTION**