

## InRoads – Updating a Project Specific XIN

Tools > Copy Preferences

### Overview

The InRoads **Copy Preferences** tool allows users to migrate new styles, symbologies and preferences from one XIN into another. The following steps describe a process to update a project specific XIN with the latest WSDOT resources.

New styles and symbologies are periodically provided in resource updates by WSDOT CAE. These updates can also be a source for updated preferences, as can shared office or region custom preferences. The InRoads **Copy Preferences** tool is a mechanism that preserves project custom preferences while allowing updated styles and symbologies to be added to your XIN.

Sometimes specific styles and symbologies are removed from the WSDOT CAE resources. This Tech Note also provides a work flow to remove outdated styles before adding the updated ones.

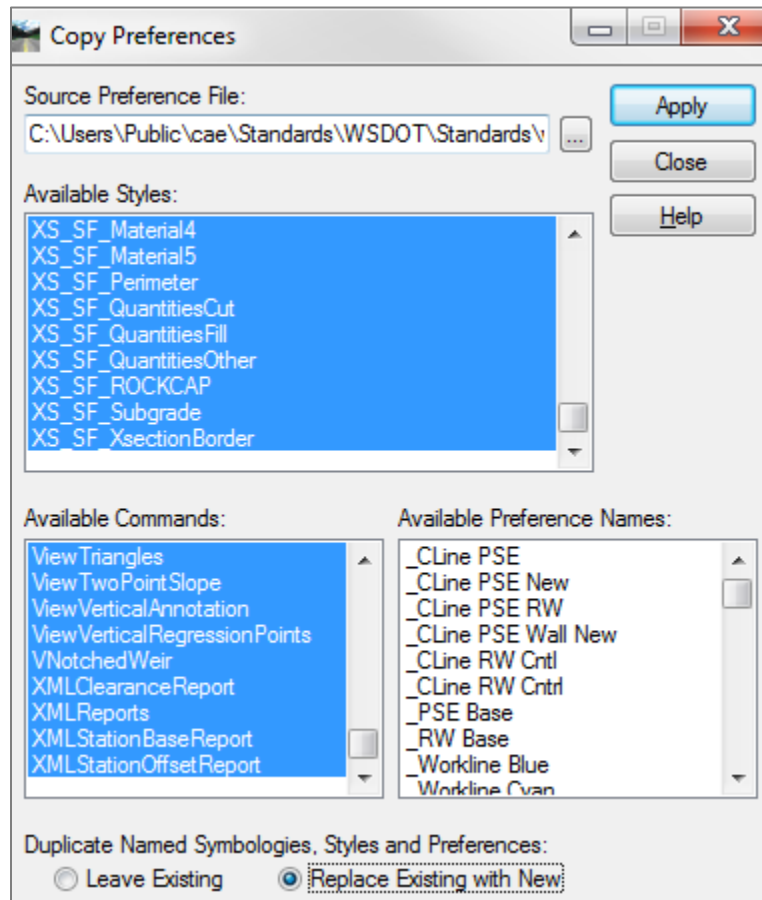
### Workflow

1. Update your resources.
  - From the Windows Start menu, select the *Engineering Applications > WSDOT Utilities* command set.
  - Select the **Refresh WSDOT Resources** option. This copies a new **wsdot\_standards.xin** file to the *C:\Users\Public\cae\Standards\WSDOT\Standards* folder.

The refresh resources function compares dates on these files and only copies a new XIN from the server if the date on the server is newer than the one on your PC. To be sure you are getting the latest XIN you can delete or rename this file before selecting **Refresh WSDOT Resources**.

2. Load the project-specific XIN.
  - The project-specific XIN should be set as active in InRoads. If it is not active, select the *File > Open* command, set the *File Type* to **Preferences (\*.xin)**, navigate to your project specific XIN and select **Open**.
3. Load the **Copy Preference** Application Add-In.
  - Use the *Tools > Application Add-Ins* command to access this tool.
4. Copy all styles, commands and preference names.
  - Select the *Tools > Copy Preferences* command.
  - Populate the *Source Preference File* with the updated **wsdot\_standards.xin**, located in the *C:\Users\Public\CAE\Standards\WSDOT\Standards* folder.
  - Toggle on the **Replace Existing with New** option.
  - Select and highlight all **Available Styles**, all **Available Commands** and, if applicable, all **Available Preference Names**.

- Click **Apply**.

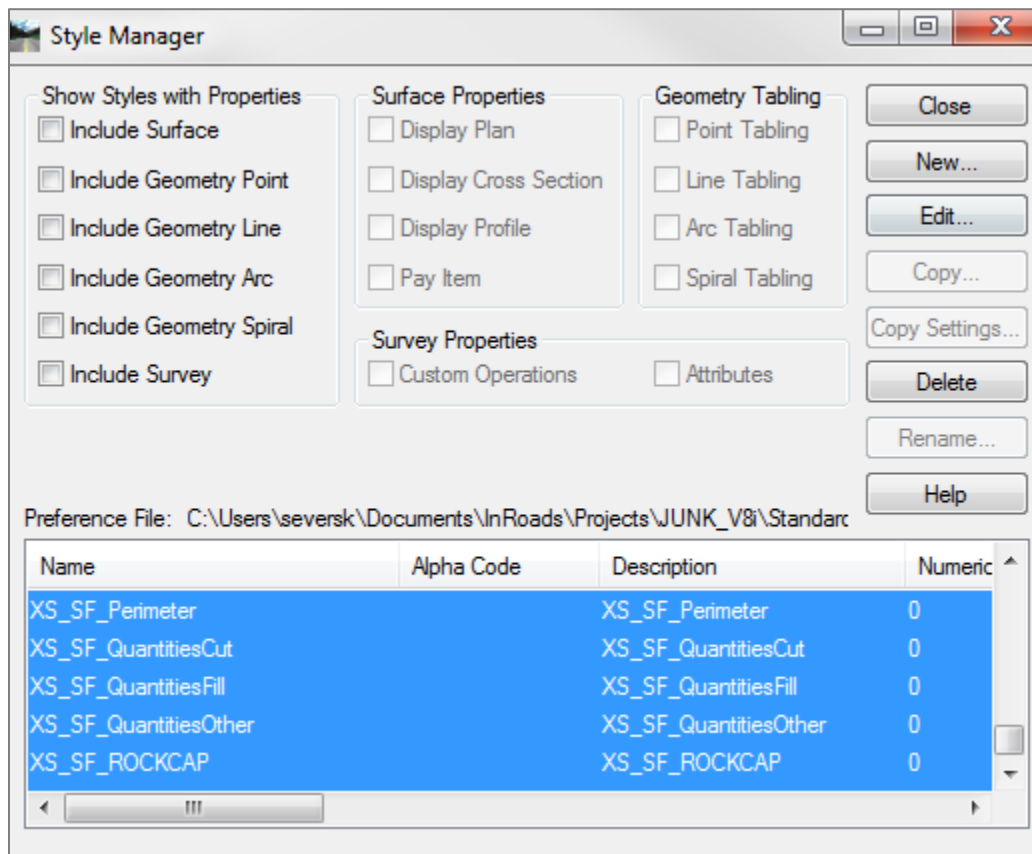


**NOTE:** To select all, highlight the first entry, scroll down to the bottom of the list and holding down the **Shift** key select the last entry in the list.

### Outdated Styles and Symbologies

When the release notes for WSDOT CAE resource updates indicate that there are some styles that are being eliminated, clear these out of your project XIN file prior to using the **Copy Preferences** tool.

To accomplish that, open the InRoads *Tools > Style Manager* command. Select all of the styles in the lower portion of the dialog.



Click the **Delete** button. It may take a few moments to process if you selected all of the styles. Then follow steps 3 and 4 as described above.

### XIN Maintenance

As XIN files evolve over projects with long durations, it's beneficial to detach your project XIN file and then copy the 'corporate' XIN into your project directory from the *C:\Users\Public\cae\Standards\WSDOT\Standards* folder. You can then either recreate your custom preferences or use your original project XIN file as the *Source Preference File*.

For questions or comments on this tech note, contact your regional CAE Support Coordinator or the WSDOT CAE Help Desk at (360) 709-**8013**.