

POLE HEIGHT (FT)	MMC #	QTY	POLE TUBE				BASE DETAIL				ANCHOR BOLT	
			THICK (IN) "A"	BASE O.D. (IN) "B"	TOP O.D. (IN) "C"	LENGTH (FT) "D"	SQUARE "S" (IN)	BOLT CIRCLE "F" (IN)	THICKNESS "G" (IN)	HOLE/SLOT "H" (IN)	ANCHOR BOLT DIA (IN)	LENGTH (IN)
15	WA-LC1-CAM15		3/16	11	8.9	15	25	25 1/2	1 1/4	1 3/8	1 1/4	52
	WA-LC1-CAM15-2HC											
20	WA-LC1-CAM20		3/16	11.8	9	20	25	25 1/2	1 1/4	1 3/8	1 1/4	52
	WA-LC1-CAM20-2HC											
30	WA-LC1-CAM30		3/16	13.2	9	30	25	25 1/2	1 1/4	1 3/8	1 1/4	52
	WA-LC1-CAM30-2HC											
40	WA-LC1-CAM40		1/4	14.6	9	40	25	25 1/2	1 1/4	1 3/8	1 1/4	52
	WA-LC1-CAM40-2HC											
50	WA-LC1-CAM50		5/16	17	10	50	25	25 1/2	1 1/4	1 3/8	1 1/4	52
	WA-LC1-CAM50-2HC											

LOAD CASE #1 LOADING:
 (1) CAMERA - 4.0 SQ FT @ 2'-0" ABOVE POLE TOP
 (1) DISH - 12" DIA @ POLE TOP
 (1) NEMA CABINET - 1.33 SQ FT @ 3'-8" FROM POLE TOP

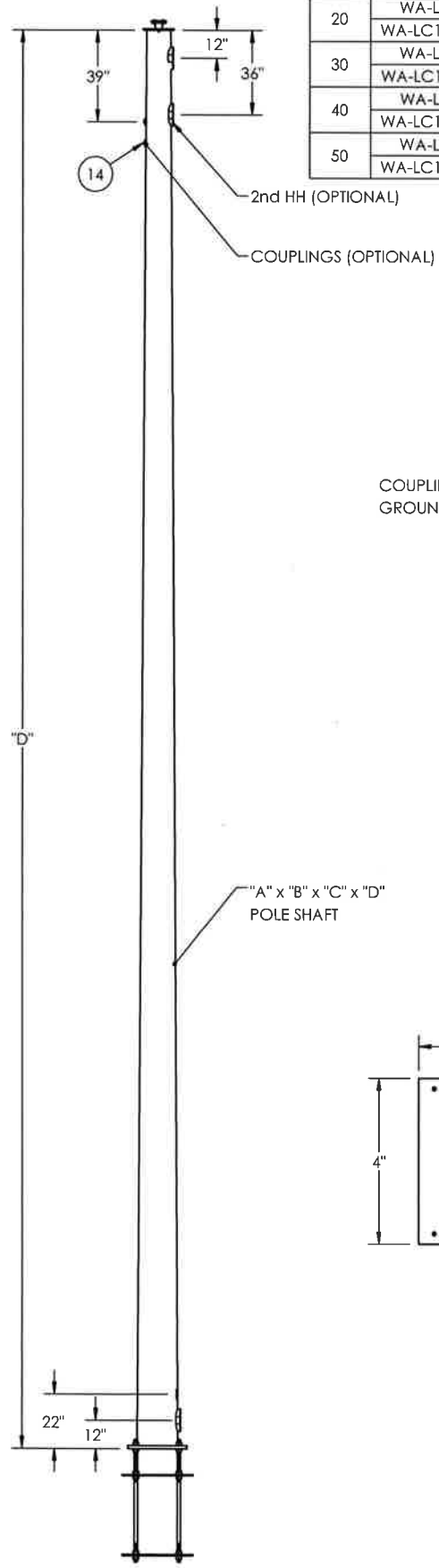
MAXIMUM DEFLECTION SHALL NOT EXCEED
 0.7" IN 30 MPH WIND,
 OR 1.4" IN 70 MPH WIND

MATERIAL SPECIFICATIONS
POST: ASTM A572 GR55 BASE PLATE: ASTM A36 MAST ARM: ASTM A572 GR55 MOUNTING PLATE: ASTM A36 HARDWARE FINISH: ASTM F2329 CONNECTION BOLTS: ASTM F1554 GR105 CONNECTION NUTS: CONNECTION WASHERS: ANCHOR BOLTS: ANCHOR BOLT NUTS: ASTM A563 GR DH ANCHOR BOLT WASHER: ASTM F436 WELDING ELBOW: N/A PIPE: ASTM A53 GR B OR ASTM A500 GR B

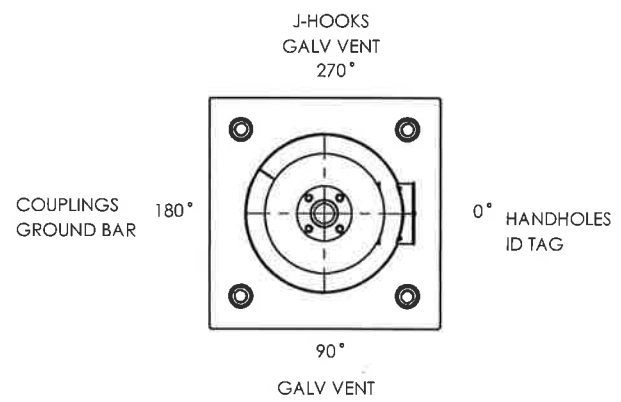
DESIGN CRITERIA
2015 AASHTO STANDARD SPECIFICATIONS FOR STRUCTURAL SUPPORTS ON HIGHWAY SIGNS, LUMINAIRES & TRAFFIC SIGNALS INCLUDING LATEST INTERIMS.
WINDS: 115 MPH WITH A MEAN RECURRENCE INTERVAL OF 1700 YEARS VORTEX SHED: N/A FATIGUE CAT: N/A NATURAL WIND GUST: N/A LUMINAIRE: N/A LUMINAIRE WEIGHT: N/A SIGN: N/A SIGN WEIGHT: N/A

WELD SPECIFICATION
THE POST AND MAST ARM TO BE ROUND TAPERED TUBE FABRICATION WITH ONE SUBMERGED ARC LONGITUDINAL SEAM WELD WITH 100% PENETRATION 6" FROM BASE PLATE, FLANGE AND BUTT WELDED SHAFTS. EXCEPT FOR TUBES LESS THAN 5 IN DIAMETERS; FOR FEMALE SECTION OF SLIP JOINTED TUBES 10' AND GREATER: 1.5 X FEMALE SECTION INSIDE DIAMETER + 6 INCHES. FOR FEMALE SECTION OF SLIP JOINTED TUBES LESS THAN 10' FEMALE SECTION NOMINAL DIAMETER AND 60% FOR REMAINDER. GAS METAL ARC WELDING PROCESS WITH 60% PENETRATION MAY BE USED FOR REMAINDER OF WELDED FABRICATION.
WELD TESTING: 100% OF ALL WELDS VISUAL TESTED (VT), 100% OF ALL COMPLETE JOINT PENETRATION (CJP) WELDS ULTRASONIC TESTED (UT) BASED ON THE THINNEST MATING MATERIAL: (PER AASHTO 2013 5.15.5-WELD INSP) THICKNESS. < 6MM (0.25 IN) MT ≥ 6MM (0.25 IN) UT A RANDOM 30% OF ALL FILLET WELDS AND PARTIAL JOINT PENETRATION (PJP) LONGITUDINAL SEAM WELDS MAGNETIC PARTICLE TESTED (MT).

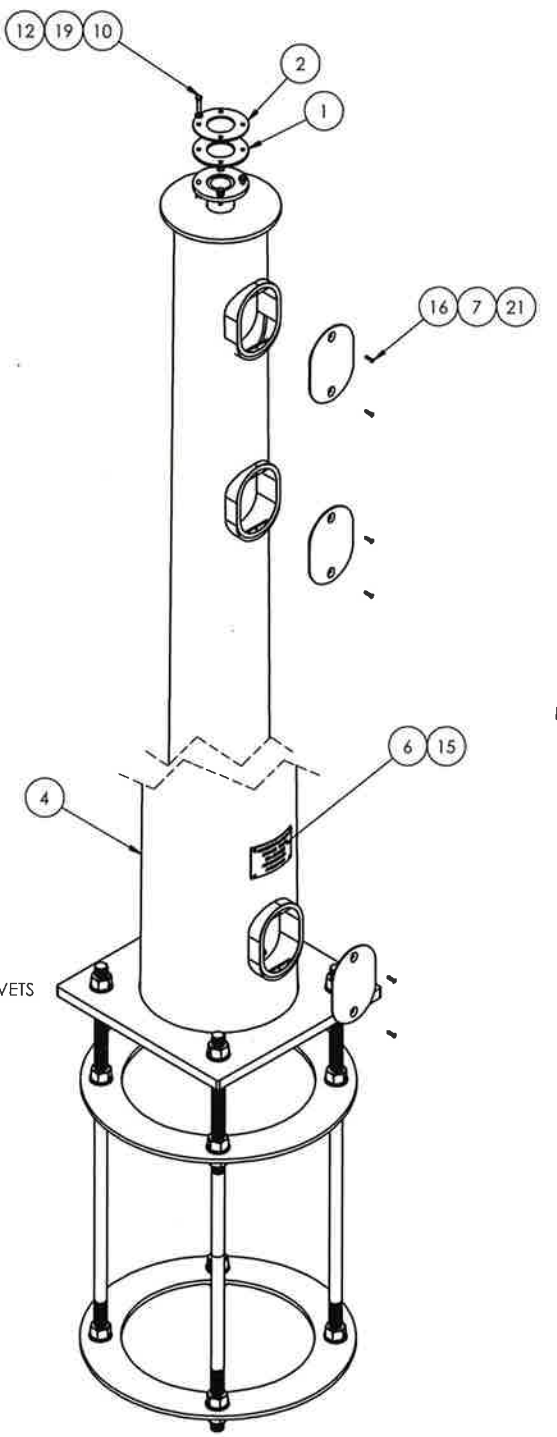
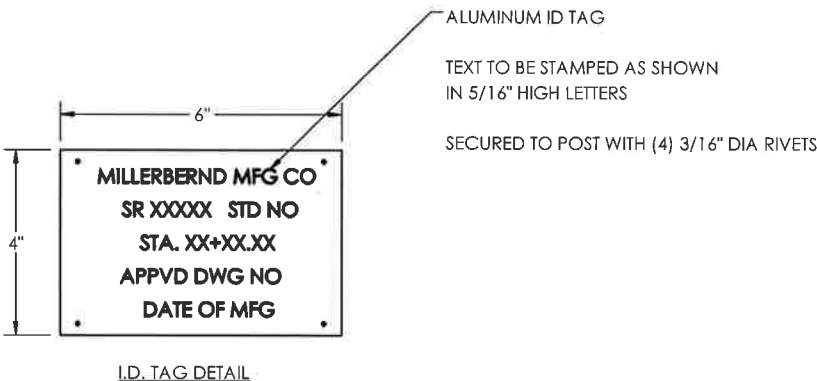
STRUCTURE FINISH SPECIFICATION
GALV. OR PRIME COAT: HOT DIPPED GALV. PER ASTM A123 FINISH COAT: COLOR: FEDERAL OR RAL SPEC.: WEIGHT W/GALV.: WEIGHT W/GALV. & PAINT: SURFACE AREA: GAL. OF PAINT:
SALES ORDER NO.: 74577 QTY: - STATE: WA SHEET: 1 OF 2
DESCRIPTION: SUB POLE CAMERA RD LC1
EST. WEIGHT: DRAWING NO: 74577-WA-LC1
PROJECT NAME: STATE OF WASHINGTON CAMERA POLES - LOAD CASE #1
PROJECT LOCATION: WA
DWN BY: REBEKAH DATE: 1/31/17
CHK BY: DATE:



MUST SPECIFY 2ND HAND HOLE AND COUPLINGS AT TIME OF ORDER
 USE MMC # WITH -2HC



TOP VIEW ORIENTATION



APPROVED
 Manufacturer's Pole Plan
 Approved For Listing As A
 Pre-Approved Drawing
 WSDOT Bridge & Structures Office
 By GB Date 9-14-2020

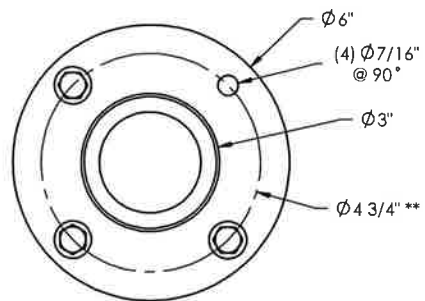


8-18-20 (EXPIRES 12-18-21)

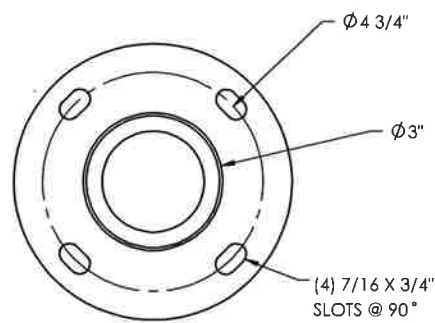
NOTE: FOR NOTE AT WELD SYMBOL TAIL, SEE WELDING PROCEDURE SPECIFICATION

ITEM NO.	DESCRIPTION	QTY PER	ASSY	FINISH
1	NEOPRENE GASKET CAMERA PLATE ASSY	1		
2	CAMERA PLATE ASSY TOP	1		X
3	BASE RD 0.5 x 30"	2		X
4	WLDMT POLE CAMERA "A" X "B" X "C" X "D"	1		X
5	GROUND MTG PLATE	1	X	X
6	I.D. TAG - WA	1	X	
7	COVER HH M34M 5x8 2 BOLT	3		X
8	BOLT HX HD 1-2-13NC X 1" F593C SS	2	X	
9	BOLT HX HD 1/4-20NC X 1/2 F593C SS	2		
10	BOLT HX HD 3-8-16NC X 1-3-4 F593C SS	4		
11	NUT HVY HX 1-1-4-7NC A563 GV(DH)	24		
12	NUT HX NYLON INSERT LOCK 3-8-16 SS	4		
13	NUT SQ 1-2-13 SS	1		
14	PLUG-THD-PL-2 PVC	2	X	
15	RIVET POP 3/16X1/2X3/8 HD SS	4	X	
16	SCRW HX SK BT HD 1-4-20NC X 1 SS	6		
17	WASHER FLAT 1-1/4 GV	24		
18	WASH F.56 IDX1.375ODX.091 THK BRASS COMM. BRASS	4	X	
19	WASHER FLAT 3/8 SS 7/8 OD	4		
20	ANCHOR BOLT 1 1/4-7X52" LG	4		
21	GASKET HH M34	3	X	

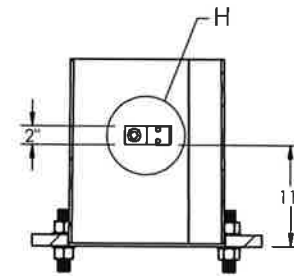
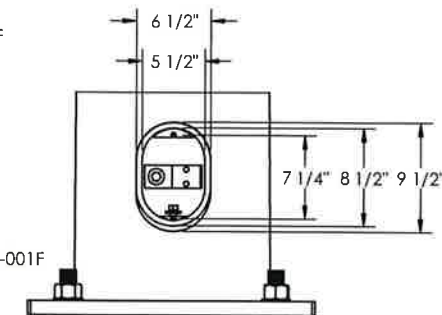
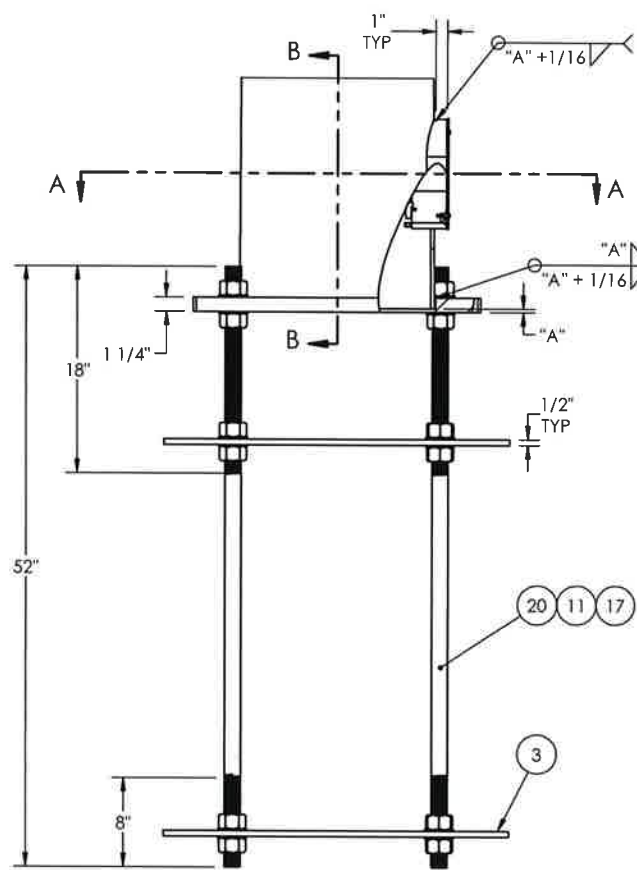
REVISIONS			
REV.	DESCRIPTION	DATE	DRFT
H	UPDATED WELD NOTE, UPDATED PER COMMENTS	6/12/2020	RK
G	UPDATED NOTES PER COMMENTS; UPDATED WPS TO MMC STANDARDS	5/8/2020	RK
F	DESIGN CRITERIA, LATEST WAS "2017"	8/8/2017	RK



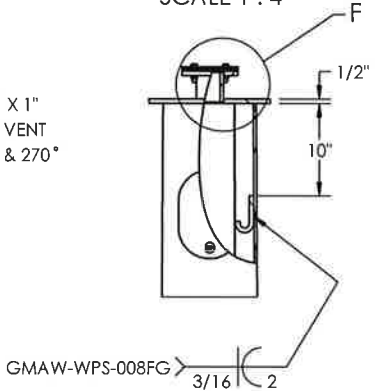
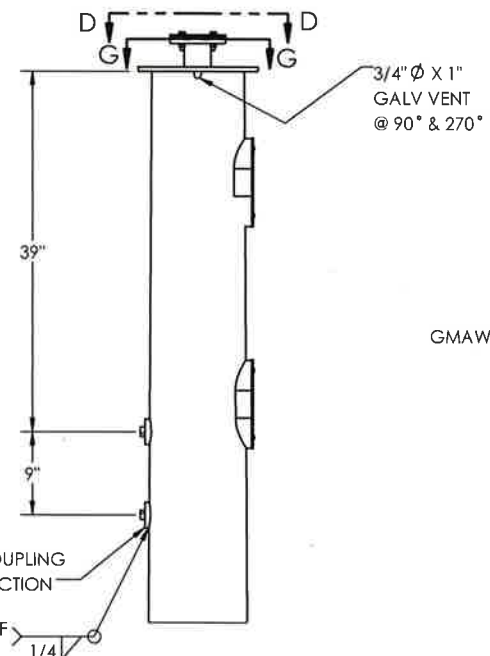
SECTION D-D
SCALE 1 : 4



SECTION G-G
SCALE 1 : 4

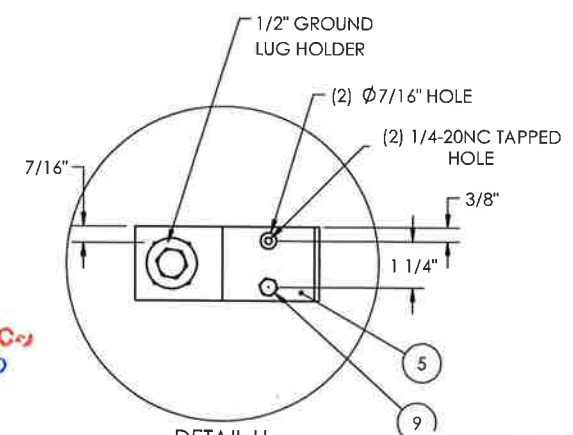


SECTION B-B
SCALE 1 : 20



****VERIFY BOLT CIRCLE AND BOLT DIA PRIOR TO FABRICATION****

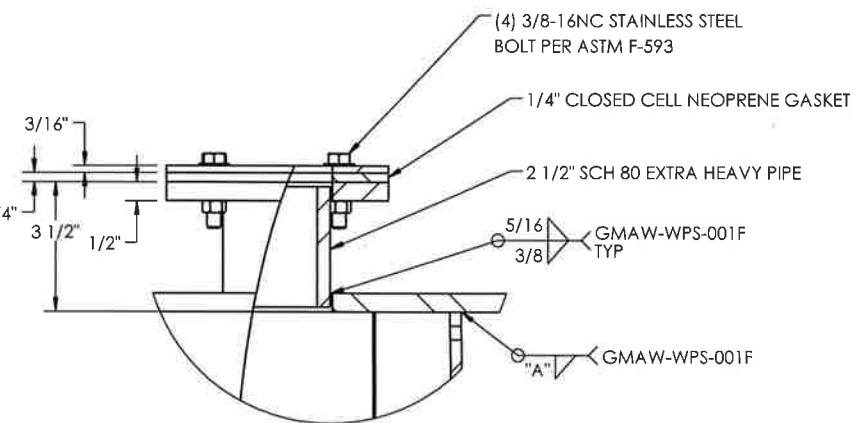
APPROVED
 Manufacturer's Pole Plan
 Approved For Listing As A
 Pre-Approved Drawing
 WSDOT Bridge & Structures Office
 By GB Date 9-14-2020



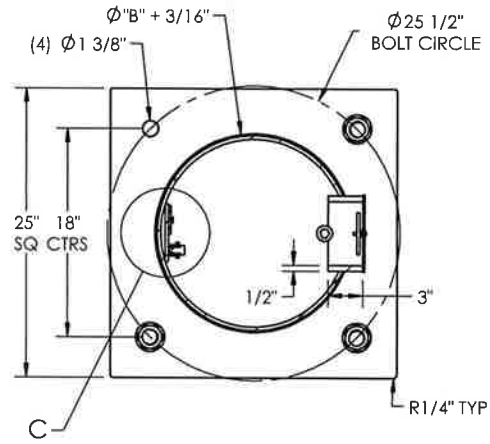
DETAIL H
SCALE 1 : 5



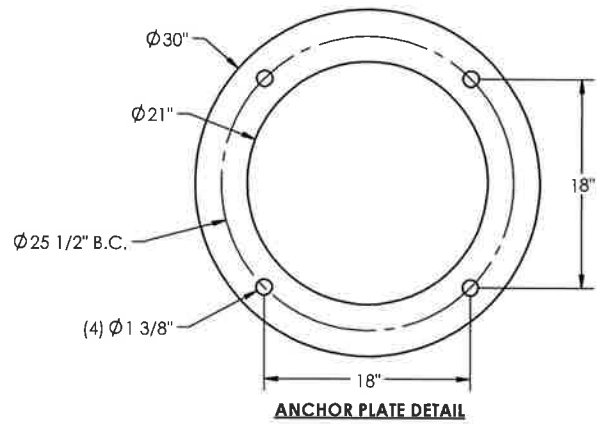
8-18-20 (EXPIRES 12-18-21)



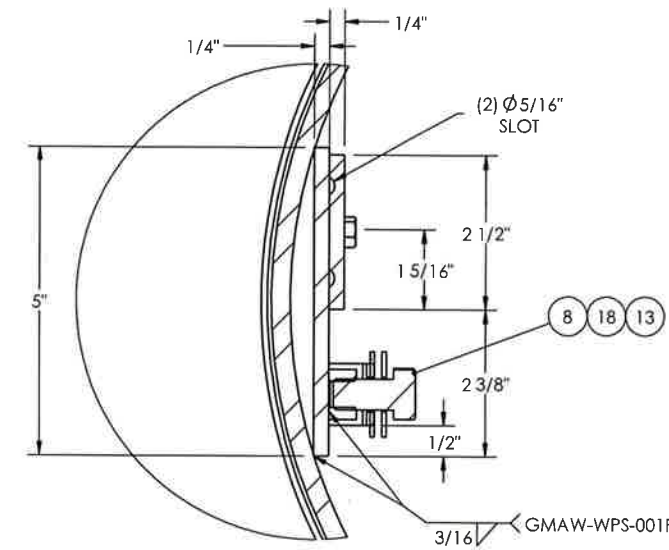
DETAIL F
SCALE 1 : 5



SECTION A-A
SCALE 1 : 16



ANCHOR PLATE DETAIL



DETAIL C
SCALE 1 : 3

MILLERBERND		622 6TH ST. SO. WINSTED, MN 55395	
THIS DOCUMENT CONTAINS CONFIDENTIAL INFORMATION AND IS THE PROPERTY OF MILLERBERND MFG AND MAY NOT BE COPIED, REPRODUCED OR DISCLOSED IN ANY MANNER WITHOUT THE EXPRESS WRITTEN CONSENT FROM MILLERBERND MFG			
SALES ORDER NO.:	QTY:	STATE:	SHEET
74577	-	WA	2 OF 2
DESCRIPTION: SUB POLE CAMERA RD LC1			
EST. WEIGHT:	DRAWING NO: 74577-WA-LC1		
PROJECT NAME: STATE OF WASHINGTON CAMERA POLES - LOAD CASE #1			
PROJECT LOCATION: WA			
PROJECT NO.:	CONTROL/CONTRACT NO.:		
DWN BY: REBEKAH	DATE: 1/31/17		
CHK BY:	DATE:		