

| POLE DATA - PED PIPE - PUSH BUTTON | | | | | | | | | | | | |
|------------------------------------|-----|-----------|-----------------|----------------------|-----------------------|--------------------|--------------------|-------------------------------|-----------------|----------------------------|----------|-----------|
| MMC # | QTY | POLE TYPE | BASE DETAIL | | | | | ANCHOR BOLT | | | | BASE TYPE |
| | | | SQUARE "S" (IN) | BOLT CIRCLE "F" (IN) | BOLT CENTERS "M" (IN) | THICKNESS "G" (IN) | HOLE/SLOT "H" (IN) | DIA "J" (IN) (FULLY THREADED) | LENGTH "K" (IN) | ANCHOR PLATE O.D. "L" (IN) | | |
| WA-PED-PBB-5 | | PPB | 7" | 6" | 4 1/4" | 1/2 | 5/8 | 1/2 | 18" | 8" | STANDARD | |
| WA-PED-PBB-5-C | | | | | | | | 1/2 | 24" | 8" | CURB | |

| POLE DATA - PED PIPE - PUSH BUTTON BREAKAWAY | | | |
|----------------------------------------------|-----|-----------|--------------------------------------|
| MMC # | QTY | POLE TYPE | BASE DETAIL |
| | | | TRANSPO 3.5 BREAKAWAY SUPPORT SYSTEM |
| WA-PED-PBB-5-BA | | PPB | |

MATERIAL SPECIFICATIONS

POST: ASTM A572 GR55
 BASE PLATE: ASTM A709 GR 50
 MAST ARM: N/A
 MOUNTING PLATE: N/A
 HARDWARE FINISH: ASTM F2329
 CONNECTION BOLTS:
 CONNECTION NUTS:
 CONNECTION WASHERS:
 ANCHOR BOLTS: ASTM F1554 GR55
 ANCHOR BOLT NUTS: ASTM A563 GR DH
 ANCHOR BOLT WASHER: ASTM F436
 WELDING ELBOW:
 PIPE: ASTM A53 GR B OR ASTM A500 GR B

DESIGN CRITERIA

2015 AASHTO STANDARD SPECIFICATIONS FOR STRUCTURAL SUPPORTS ON HIGHWAY SIGNS, LUMINAIRES & TRAFFIC SIGNALS INCLUDING LATEST INTERIMS.

WINDS: 115 MPH WITH A MEAN RECURRENCE INTERVAL OF 1700 YEARS
 VORTEX SHED: N/A
 FATIGUE CAT: N/A
 NATURAL WIND GUST: N/A
 LUMINAIRE: N/A
 LUMINAIRE WEIGHT: N/A
 SIGN: N/A
 SIGN WEIGHT: N/A

WELD SPECIFICATION

THE POST AND MAST ARM TO BE ROUND TAPERED TUBE FABRICATION WITH ONE SUBMERGED ARC LONGITUDINAL SEAM WELD WITH 100% PENETRATION 6" FROM BASE PLATE, FLANGE AND BUTT WELDED SHAFTS. EXCEPT FOR TUBES LESS THAN 5 IN DIAMETERS. FOR FEMALE SECTION OF SLIP JOINTED TUBES 10" AND GREATER: 1.5 X FEMALE SECTION INSIDE DIAMETER + 6 INCHES. FOR FEMALE SECTION OF SLIP JOINTED TUBES LESS THAN 10" FEMALE SECTION NOMINAL DIAMETER AND 60% FOR REMAINDER. GAS METAL ARC WELDING PROCESS WITH 60% PENETRATION MAY BE USED FOR REMAINDER OF WELDED FABRICATION.

WELD TESTING: 100% OF ALL WELDS VISUAL TESTED (VT) (MT), 100% OF ALL COMPLETE JOINT PENETRATION (CJP) WELDS ULTRASONIC TESTED (UT) BASED ON THE THINNEST MATING MATERIAL: (PER AASHTO 2013 5.15 5-WELD INSP) THICKNESS.
 < 6MM (0.25 IN) MT
 ≥ 6MM (0.25 IN) UT

WELDING INSPECTION OF STRUCTURE SHALL BE IN ACCORDANCE WITH THE REQUIREMENTS OF WASHINGTON STATE DEPARTMENT OF TRANSPORTATIONS STANDARD SPECIFICATION SECTION 6-03.3(25) AND 2015 AASHTO WELD INSPECTION SECTION 14.4.4.8

STRUCTURE FINISH SPECIFICATION

GALV. OR PRIME COAT: HOT DIPPED GALV. PER ASTM A123
 FINISH COAT:
 COLOR:
 FEDERAL OR RAL SPEC.:
 WEIGHT W/GALV.:
 WEIGHT W/GALV. & PAINT:
 SURFACE AREA:
 GAL. OF PAINT:

MILLERBERND 622 6TH ST. SO. WINSTED, MN 55395

THIS DOCUMENT CONTAINS CONFIDENTIAL INFORMATION AND IS THE PROPERTY OF MILLERBERND MFG AND MAY NOT BE COPIED, REPRODUCED OR DISCLOSED IN ANY MANNER WITHOUT THE EXPRESS WRITTEN CONSENT FROM MILLERBERND MFG

| | | | |
|------------------|------|--------|--------|
| SALES ORDER NO.: | QTY: | STATE: | SHEET |
| 74514 | - | WA | 1 OF 2 |

DESCRIPTION: SUB POLE PED PUSH BUTTON

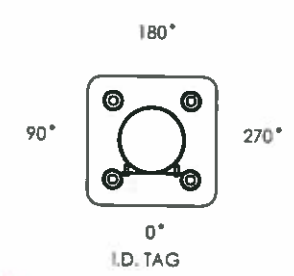
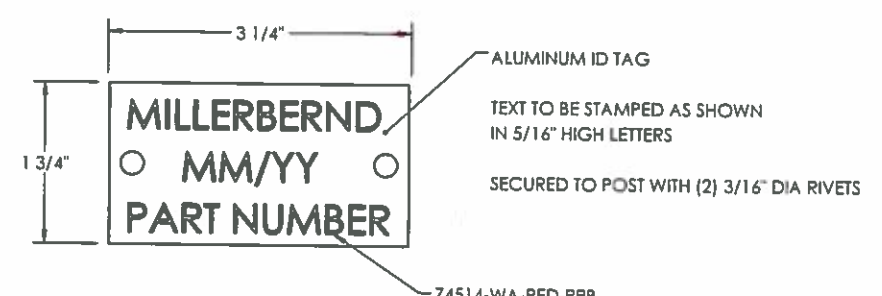
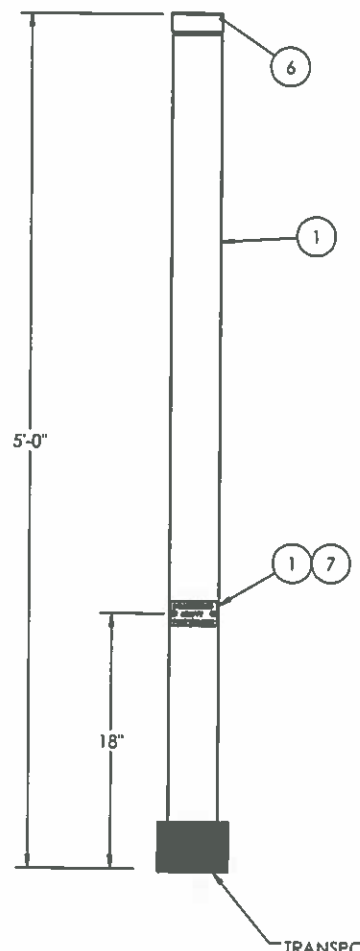
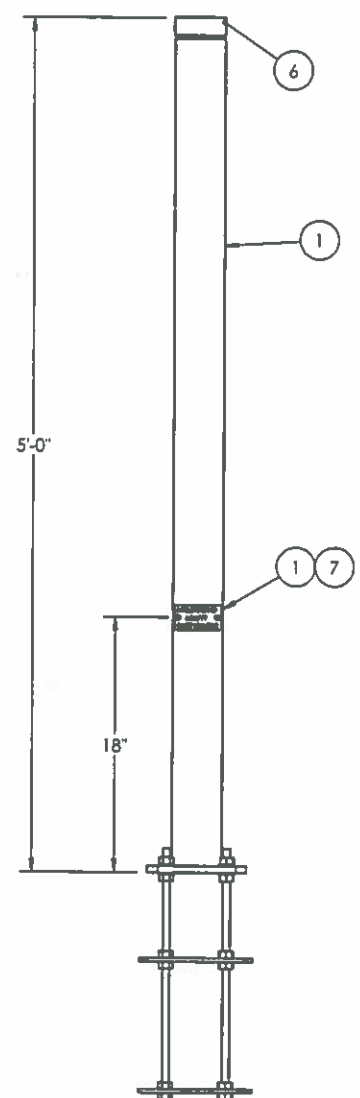
EST. WEIGHT: DRAWING NO: 74514-WA-PED-PPB

PROJECT NAME: STATE OF WASHINGTON PED POLES

PROJECT LOCATION: WA

DWN BY: REBEKAH DATE: 02-16-2017

CHK BY: DATE:



APPROVED
 Manufacturer's Pole Plan
 Approved For Listing As A
 Pre-Approved Drawing
 WSDOT Bridge & Structures Office
 By GB Date 3-30-2021

NOTE: FOR NOTE AT WELD SYMBOL TAIL, SEE WELDING PROCEDURE SPECIFICATION

| ITEM NO. | DESCRIPTION | QTY PER | ASSY | FINISH |
|----------|--------------------------------------------|---------|------|--------|
| 1 | WLDMT POLE PED PIPE 3 1/2x5'0 (3" SCH 40) | 1 | | X |
| 2 | BASE RD 1/4" x 8" | 2 | | X |
| 3 | ANCHOR BOLT 1/2X"K" LG (FULLY THREADED) | 4 | | |
| 4 | NUT HVY HX 1-2-13NC A563 GV (DH) | 24 | | |
| 5 | NUTHX1-4-20SS | 3 | | |
| 6 | CAP THD 3" (3 1/2" OD) | 1 | | X |
| 7 | RIVET POP 3/16X1/2X3/8 HD SS | 2 | X | |
| 8 | WASHER FLAT 1/2 GV | 8 | | |
| 9 | WASHER FLAT 1/4 SS 5/8 OD ASME B18.22.1 SS | 2 | | |
| 10 | I.D. TAG - WA | 1 | | |

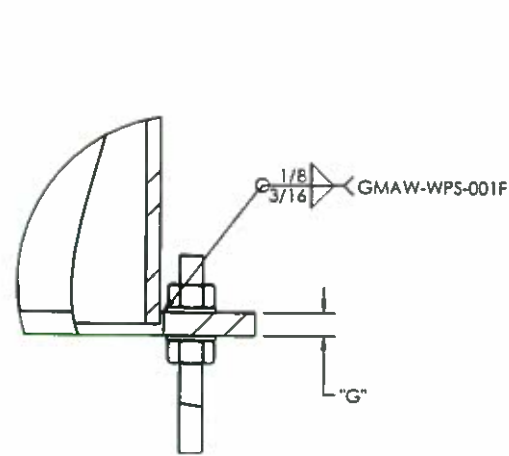
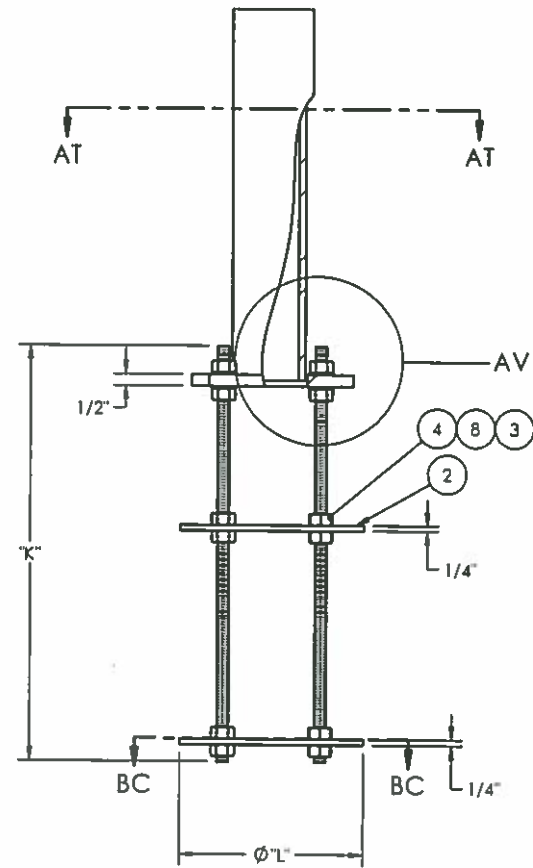


STANDARD BASE / CURB BASE

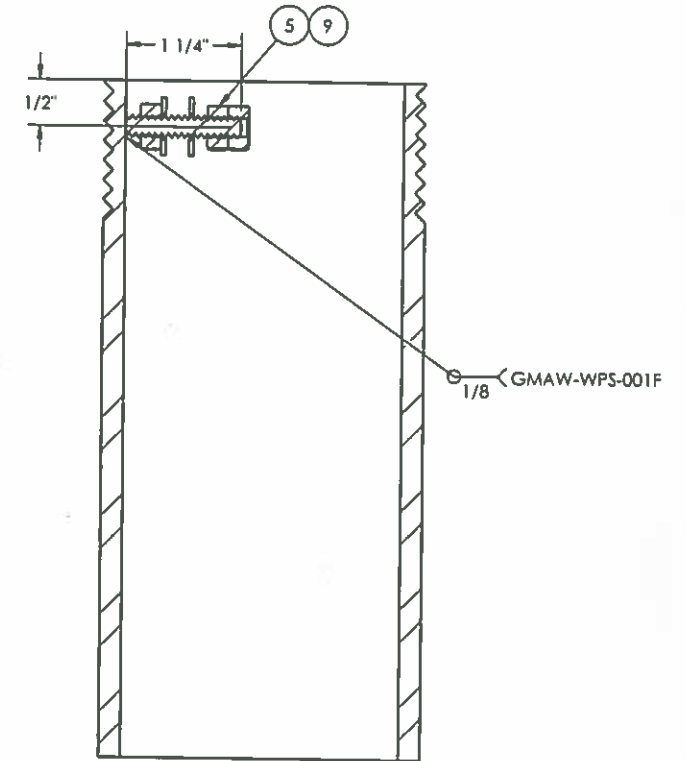
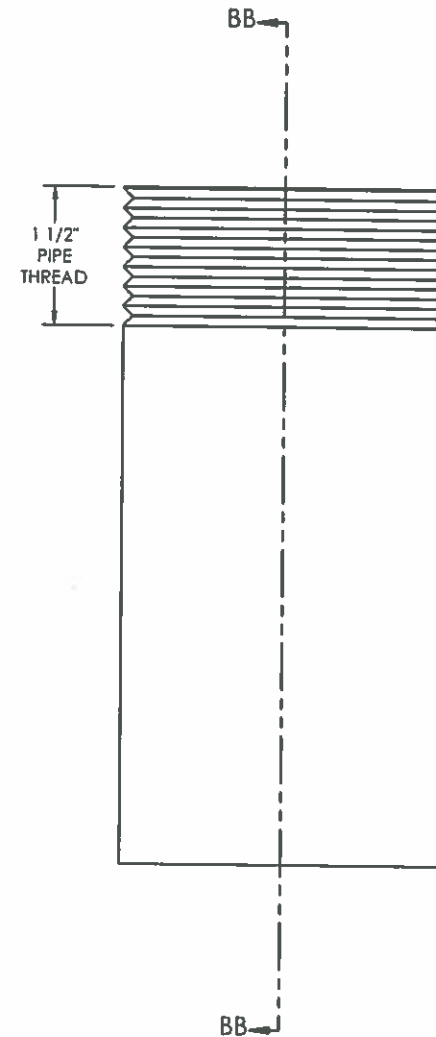
BREAKAWAY

| REVISIONS | | | |
|-----------|-------------------------------------------------------------------------------|-----------|------|
| REV. | DESCRIPTION | DATE | DRFT |
| J | ADDED A CURB AND BREAKAWAY OPTION | 3/22/21 | TK |
| H | UPDATED WELD NOTE | 6/12/20 | RK |
| G | UPDATED NOTES PER COMMENTS; UPDATED WPS TO MMC STANDARDS | 5/12/2020 | RK |
| F | UPDATED A. BOLTS ON SHT 2 TO REFLECT 18". CLARIFIED STRAIGHT THREADS FOR PIPE | 1/22/2020 | RK |

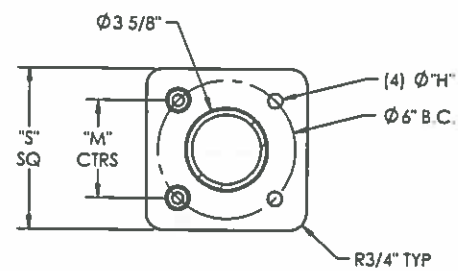
TRANSPO AP 3.5 BREAKAWAY SUPPORT SYSTEM SEE ATTACHED DRAWINGS



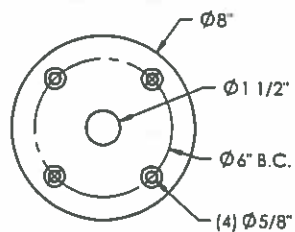
DETAIL AV
SCALE 1 : 4



SECTION BB-BB
SCALE 1 : 2



SECTION AT-AT
SCALE 1 : 8



SECTION BC-BC
SCALE 1 : 8

APPROVED
 Manufacturer's Pole Plan
 Approved For Listing As A
 Pre-Approved Drawing
 WSDOT Bridge & Structures Office
 By GB Date 3-30-2021



3-30-21 (EXPIRES 12-18-21)

| | | | |
|--------------------------------------------------------------------------------------------------------------------------------------------------------------------------------------------------------------|------|--------------------------------------|--------|
| MILLERBERND | | 622 6TH ST. SQ. WINSTED, MN 55395 | |
| THIS DOCUMENT CONTAINS CONFIDENTIAL INFORMATION AND IS THE PROPERTY OF MILLERBERND MFG AND MAY NOT BE COPIED, REPRODUCED OR DISCLOSED IN ANY MANNER WITHOUT THE EXPRESS WRITTEN CONSENT FROM MILLERBERND MFG | | | |
| SALES ORDER NO.: | QTY: | STATE: | SHEET |
| 74514 | - | WA | 2 OF 2 |
| DESCRIPTION: SUB POLE PED PUSH BUTTON | | | |
| EST. WEIGHT: | | DRAWING NO: 74514-WA-PED-PPB | |
| PROJECT NAME: STATE OF WASHINGTON PED POLES | | | |
| PROJECT LOCATION: WA | | | |
| DWN BY: REBEKAH | | DATE: 02-16-2017 | |
| CHK BY: | | DATE: | |