

# SR 202 Corridor Studies

## Fall City Community Association

**244<sup>th</sup> Ave NE to 324<sup>th</sup> Ave SE**  
**324<sup>th</sup> Ave SE to SR 203**

Maan Sidhu, King Area Traffic Engineer, NW Region Traffic  
Thomas A. Noyes, Sr. Transportation Planner, MoM Division

**January 4, 2022**

# SR 202 Corridor Studies

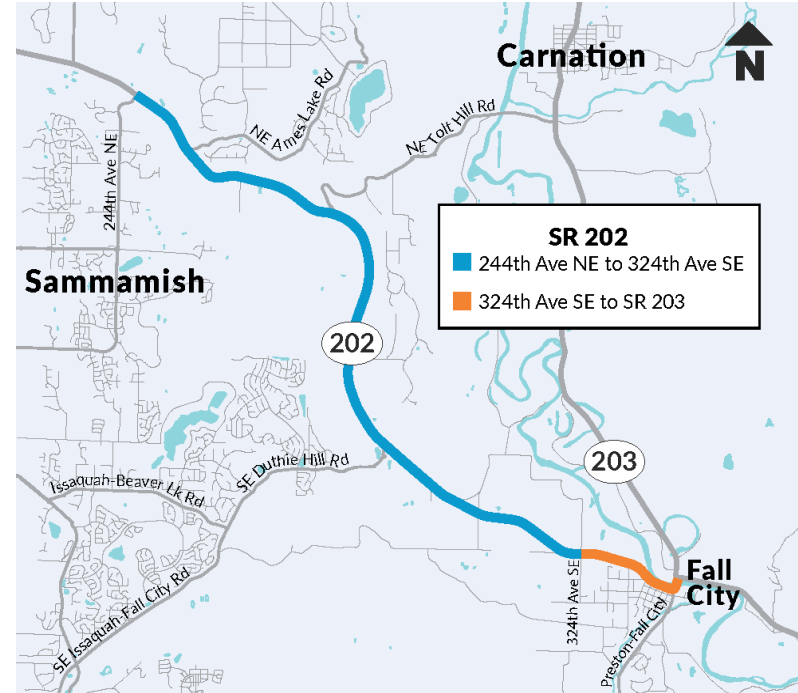
## **Tonight's Meeting**

- Recap: Study Purpose & Background
- Community Outreach
- SR 202 Corridor Existing Needs
- Evaluation criteria / screening process
- Recommendations
- Next Steps

# SR 202 Studies Context

## 244th Ave NE to 324th Ave SE

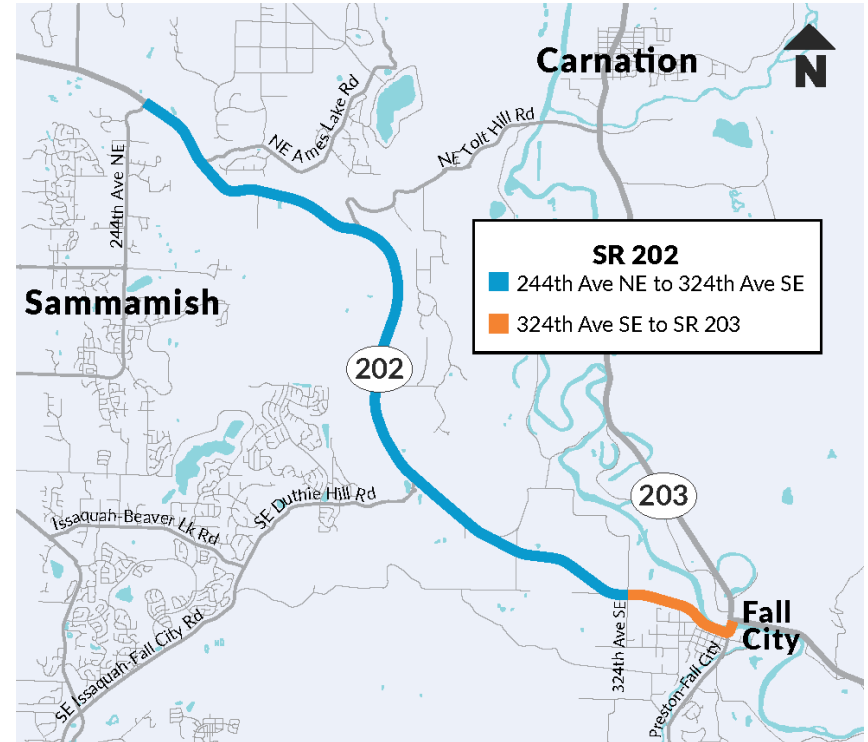
- Primarily safety-focused
- Understand community priorities and roadway issues
- Identify strategies to address:
  - Traveler safety
  - Roadway operations
  - Intersection performance



# SR 202 Studies Context

## 324<sup>th</sup> Ave SE to SR 203 – Fall City

- Understand community priorities and roadway issues
- Document community vision
- Identify strategies to address:
  - Pedestrian and traveler safety
  - Multimodal access



# Study Partners

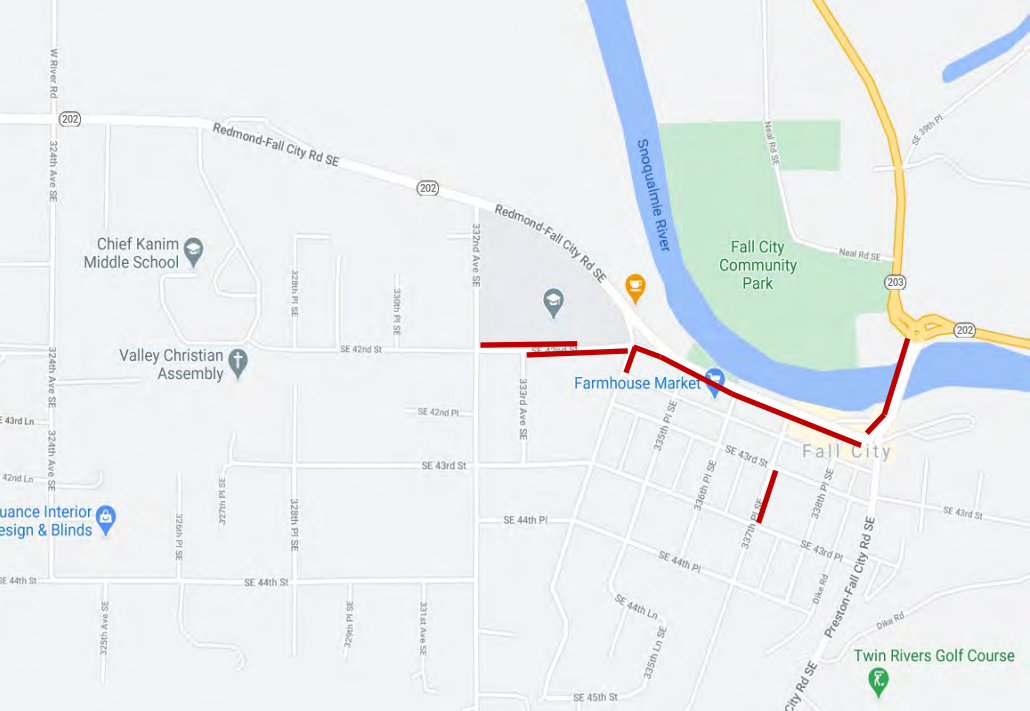
- King County Roads Division
- King County Transportation Planning
- King County Metro
- Snoqualmie Valley School District
- Washington State Patrol
- Fall City Community Association
- Puget Sound Regional Council
- Tribes

# Problem Statement

SR 202 in Fall City lacks complete pedestrian facilities and has documented performance issues.



# Pedestrian Connectivity in Fall City





# Communications and Outreach

- Web survey (724 responses!)
  - Trip purpose
  - Origins and Destinations
  - User needs & perspectives
- Online open house
- Webpage, online resources

**WSDOT** SUMMER/FALL 2020

## SR 202 Corridor Studies

The Washington State Department of Transportation (WSDOT) seeks community input on two corridor studies along SR 202. One study will focus on SR 202 between 244th Ave NE to 324th Ave SE, and the second study will cover SR 202 between 324th Ave SE and SR 203 in Fall City.

Input from residents, business owners, and road users will help shape this planning work. These studies will set the stage to pursue future funding for the design and construction of highway improvements.

**BACKGROUND**

**SR 202 from 244th Avenue NE to 324th Avenue SE**  
Between 244th Ave NE and 324th Ave SE, SR 202 passes through rural King County as a high-speed state highway. Locations along the corridor have a history of crashes and safety concerns. This study will evaluate safety on this segment of SR 202, and will develop targeted strategies to improve safety performance.

**SR 202 in Fall City**  
SR 202 within Fall City has gaps in pedestrian facilities between recreational areas, residential neighborhoods, and businesses in Fall City. The intersection of Preston-Fall City Road also remains unimproved since the completion of the roundabout at the intersection of SR 202 and SR 203. This study will assess corridor needs for SR 202 from the 324th Ave SE intersection to the roundabout junction at SR 203. It will document strategies to improve operations, safety performance, and accessibility for all users.



# Intersections



# Evaluation Criteria

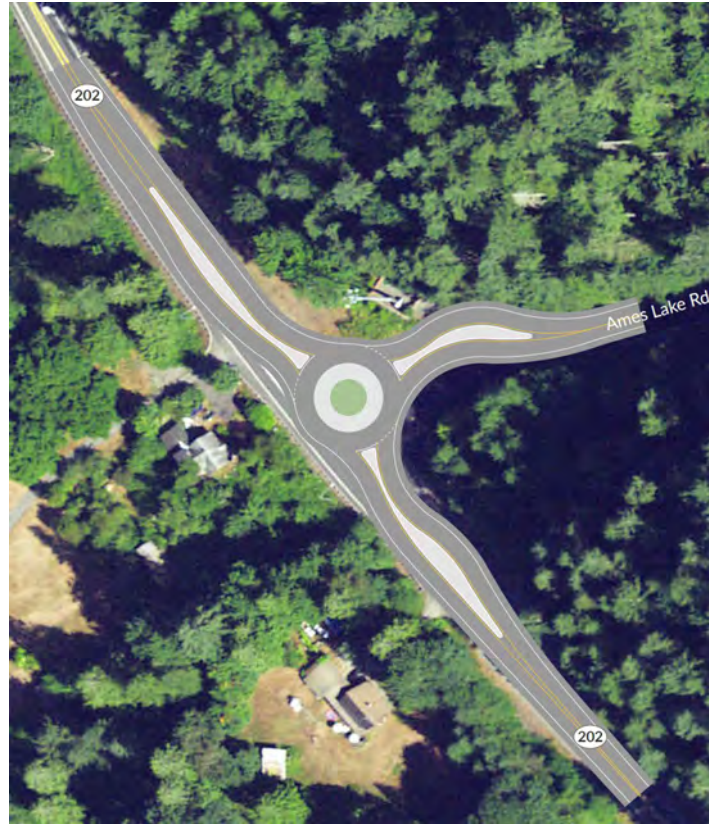
- Safety (consistency with Target Zero, Crash-reduction, etc.)
- Accessibility (pedestrian connectivity, access to transit)
- Constructability (cost, technical feasibility, etc.)
- Community Support (including preserving community character)

# SR 202 in Downtown Fall City





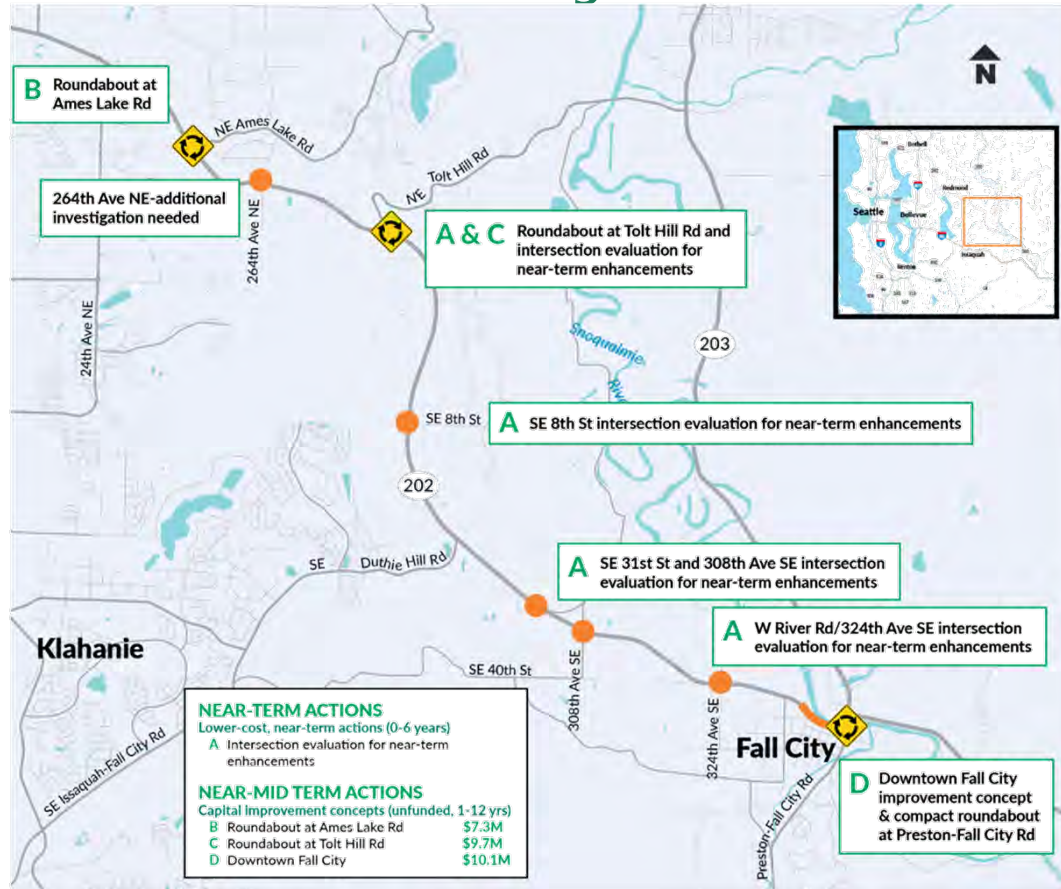
# SR 202 Corridor – Ames Lake Road



# SR 202 – Tolt Hill Road



# SR 202 Corridor Study Recommendations





# SR 202 Corridor Studies – Next Steps

## **Final Engagement / Outreach**

- 2<sup>nd</sup> (Final) Stakeholder Committee Meeting – December 9, 2021
- Fall City Community (FCCA) Briefing – January 2022 Tonight!
- Website / Public outreach

## **Draft & Final Report**

- Final Report (Winter 2022)

## **Incorporate Strategies/Recommendations into Local / Regional Plans**

- PSRC / King County – Fall City Community

## **Pursue Grant Funding Opportunities for design & Implementation**



# SR 202 Corridor Studies

## Contacts

**Maan Sidhu:** [Maan.Sidhu@wsdot.wa.gov](mailto:Maan.Sidhu@wsdot.wa.gov)

**Thomas Noyes:** [Thomas.Noyes@wsdot.wa.gov](mailto:Thomas.Noyes@wsdot.wa.gov)

**Study Website:**

<https://wsdot.wa.gov/planning/studies/sr202/multimodal-planning/home>