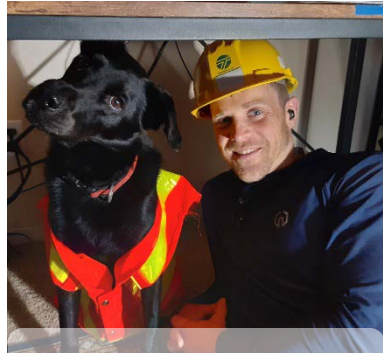


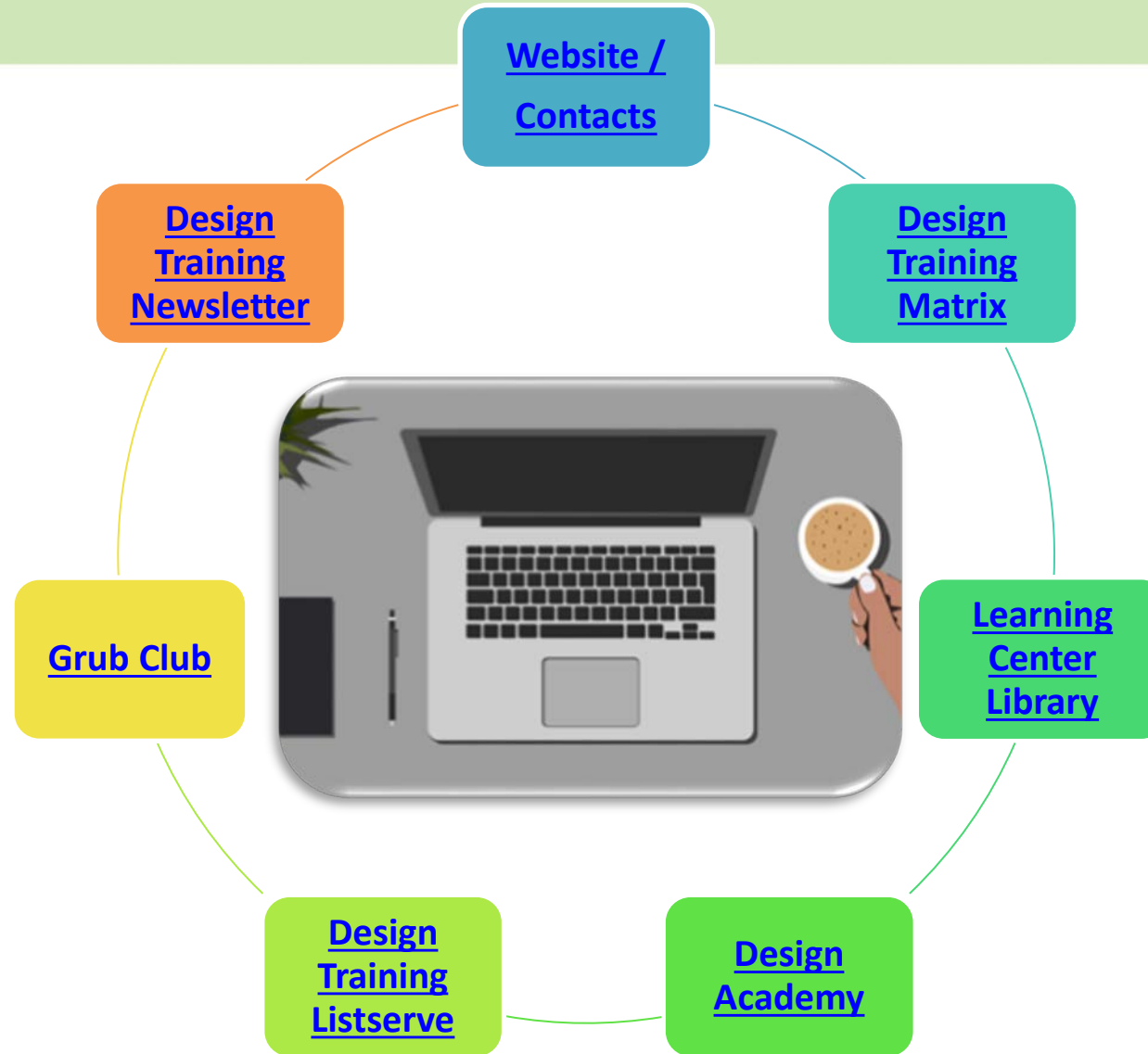
# Statewide Design Training Overview



**Dan  
Backman**



**Carol  
Winfrey**



(Text Blocks are Links to resources)

# Many Types of Training Resources Available



- **Listserv** (Subscription email group)
- **Monthly Newsletter** (Listserv)
- **Monday Morning Minute** (Listserv)
- **Design Training Matrix** (Priorities)
- **Learning Center Libraries** (Search)
- **Grub Club** (Live / Recorded)
- **Design Academy** (Virtual / In Person)
- **Trainer and Specialty group Contacts**

# How to find training, trainers and be informed

1. Design training resources can be found at:

<https://wsdot.wa.gov/engineering-standards/project-management-training/training/design-training>

2. There is a list of specialized trainers [WSDOT-Training-Contacts.pdf](#)

3. There is a “[Design Training News](#)” Listserv to receive emails. The Listserv includes the Training Newsletter, Monday Morning Minute, Grub Club, and all other training announcements. There are **500+ subscribers**.

4. There is a great document describing the specialty groups [specialty group descriptions and contact list](#) **Reach out early and often!!!!**

# Design Training Courses Matrix

- Training guide for Technicians, Engineers, and Engineering Managers.
- Lists design training available in the Learning Center (LC) and the type of training that it is (links to LC).
- Recommends priorities for the different technician and engineering job classes. Please contact us to tailor your training needs.

Design Courses Training Matrix - Learning Center (LC) Courses and Priority Recommendations

LC Group	Learning Center (LC) Course Name	Hours	Type SS OLT ILT	TT2-3	TE1-2	TE3	Manager	Recommended Attendees
DES	<a href="#">WSDOT ACCESS CONTROL OLT</a>	4	OLT	3	3	2	2	Staff involved with WSDOT owned roadways which all have Limited or Managed Access Control
DES	<a href="#">WSDOT DES: BASIS OF ESTIMATE</a>	1	OLT	3	3	3	3	Staff involved with project estimates
DES	<a href="#">WSDOT DES: COGNITIVE BIAS</a>	1	OLT	3	3	3	3	All staff
DES	<a href="#">WSDOT DES: CONSTRUCTABILITY IN DESIGN</a>	4	OLT	3	2	1	2	Staff involved in planning, scoping, design, and construction

# Learning Center “WSDOT Design Training” Library

- This library matches the Design Training Courses Matrix.
- Navigate to Library > “WSDOT Design Training” > Search.

The screenshot displays the WSDOT Learning Center interface. At the top, the navigation bar includes the WSDOT Learning Center logo, user options (SELF, MY TEAM, ADMINISTRATION), and a search bar with a dropdown menu set to 'Learning'. The main content area is titled 'LIBRARY' and shows the breadcrumb path 'Library / WSDOT Design Training'. A sidebar on the left contains navigation icons for Home, Timeline, Library (highlighted), All Users, Learning Activities, Training Transcript, and Training Schedule. The 'TOPICS' section lists various training categories, with 'WSDOT Design Training' highlighted in a red box. The 'FILTERS' section is currently empty. The search results for '\*contract spec' are displayed, showing 10 of 10 results. Two results are visible: 'WSDOT Contract Plans Review OLT' and 'WSDOT DES: CONTRACT SPEC WRITING - MODULE 01 INTRODUCTION\_1 OF 8 @ 24 MINUTES'. Red boxes highlight the search input, the result count, and the selected topic in the sidebar. Blue arrows indicate the navigation path from the sidebar to the search bar and from the search results back to the selected topic.

WASHINGTON STATE LEARNING CENTER

SELF ▾ MY TEAM ▾ ADMINISTRATION ▾

Learning ▾ Search

Home / Library / WSDOT Design Training

## LIBRARY

Browse and search for available learning activities. You can use the Topics tab to narrow your results by subject and the Filters tab to apply additional criteria (such as the activity type or duration).

**TOPICS** FILTERS

- All
- ONEWA WORKDAY
- Prosci Training
- > WA State Enterprise Training
- > WSDOT Accounting & Finance Services
- WSDOT Complete Streets
- > WSDOT Continuous Improvement
- > WSDOT Culture of Belonging
- WSDOT Design Training**
- WSDOT Environmental

### WSDOT DESIGN TRAINING

[Share Topic](#)

\*contract spec

10 of 10 results for "\*contract spec"

Sort By: Name: A To Z ▾

ONLINE COURSE  
**WSDOT Contract Plans Review OLT**  
The Contract Plans Review course provides an overview about preparing contract plans and estimates for PS&E. The course provid...  
WSDOT\_Contract\_Plans\_Review\_OLT

ONLINE COURSE  
**WSDOT DES: CONTRACT SPEC WRITING - MODULE 01 INTRODUCTION\_1 OF 8 @ 24 MINUTES**  
In this course, you will be introduced to WSDOT Special Provisions - which are Contract Provisions that are part of the Contract for ...  
WSDOT\_DES\_CSW\_Mod\_1

# Grub Club Library and Recordings

**Grub Club is a yearlong series of 1-hour of bi-weekly sessions that offer a diverse array of topics and presenters (Express Interest in course)**

The screenshot shows the WSDOT Grub Club Library interface. On the left is a navigation sidebar with icons for Home, Timeline, Library, All Users, Learning Activities, Training Transcript, and Training Schedule. The main content area is titled 'LIBRARY' and includes a breadcrumb 'Library / WSDOT Grub Club'. Below this is a search bar and a 'Sort By: Name: A To Z' dropdown. The interface is divided into 'TOPICS' and 'FILTERS' sections. The 'TOPICS' list includes 'All', 'ONEWA WORKDAY', 'Prosci Training', 'WA State Enterprise Training', 'WSDOT Accounting & Finance Services', 'WSDOT Complete Streets', 'WSDOT Continuous Improvement', 'WSDOT Culture of Belonging', 'WSDOT Design Academy', 'WSDOT Design Training', 'WSDOT Environmental', 'WSDOT GIS Training', 'WSDOT Grub Club', and 'WSDOT Learn Forward'. The 'WSDOT Grub Club' item is highlighted with a red box. A blue arrow points from this box to a search bar containing '\*2025'. Another blue arrow points from the search bar to the first search result, 'WSDOT DES: 2025 Grub Club', which is also highlighted with a red box. The search results show '3 of 3 results for "\*2025"'. The first result is an 'ILT COURSE' titled 'WSDOT DES: 2025 Grub Club' with a description: 'To Join Grub Club please "Express interest" on the "Registration" page and you will receive the MS Teams meeting invitation. Grub ...'. The second result is an 'ONLINE COURSE' titled 'WSDOT DES: 2025 GRUB CLUB 1-15-25 Complete Streets Deferrals' with a description: 'January 15th 2025 Grub Club recording of Complete Streets Deferrals.'. The third result is a 'DOCUMENT' titled 'WSDOT DES: 2025 GRUB CLUB 24 FE-EIT PART 7' with a description: 'This recording is part 7 of an ongoing series of FE/EIT review sessions. The intro includes a review of information from sessions #1 t...'. Each result includes a pencil icon, a heart icon, and a share icon.

# Additional Training Coordinated by...



## Monday Morning Minute

This is a weekly email from the listserv on new and interesting topics.



**Mark Gabel**  
[gabelM@wsdot.wa.gov](mailto:gabelM@wsdot.wa.gov)  
**360-705-7457**

## “WSDOT DES: 2025 Grub Club” – Sample topics:

1st Wed of the month	Amy Kim & Sarah Thomasson	DES – Facility Professional Services – Energy; Radio station or Forest Learning Center project
3rd Wed of the month	Scotty Ireland, Forrest Dill, Mark Steingrebe.	Cost Estimating, practical experience from the OR fish passage bundles
1st Wed of the month	Mark Gabel	Design Academy, Project Management and other tips
3rd We of the month	Tony Leingang, Steve Haapala, John Romero	Work zone traffic control
1st Wed of the month	Mark Sujka	Risk Management – Design Academy

# Design Academy – Once per Year



Premier Design Training event. It takes participants through the Project Development process via virtual and in person sessions by key support groups, as well as a team design project.

## WHO?

Design Academy is recommend for design engineers, team leaders, support offices, and others interested in the design process.

## WHY?

This blended learning experience has virtual instructor led pre-academy sessions and 4 days of in person training.

## HOW?

Region and division management identify the students. Inform your region or division manager contact of your interest in attending Design Academy.

Contact Your Registration Coordinators:

NWR Sno King	Hung Huynh
NWR Mt Baker Area	Shane Spahr
NCR	Michael Roy
OR	Karen Boone
SWR	Caroline Bricheux
SCR	Brent Schilperoort
ER	Thomas Brasch
HQ	Your division manager
Mega	Dawn Yankauskas
WSF	William Marcouiller

(Attendees are selected by Region/Division Managers)



# Virtual and In Person Sessions



## Pre-Academy

Sessions provide lecture intro to all the topics to jumpstart learning.

They are done live and then recording is available for make up.

Pre-Academy Session	Interactive Sessions at Conference
Design Documentation	n/a
Design Analysis	n/a
Design Manual Overview	Creating a Balanced Design
Real Estate Services	Real Estate Services
Traffic	Traffic
Environmental	Environmental
Geotech	Geotech
Utilities	Utilities
Right of Way	Right of Way
Bridge and Structures	Bridge and Structures
Hydraulics	Hydraulics Fair
Estimating: Unit Bid Price	n/a

## In person

engaging and/or hands on experience with the topic.

This goes deeper into subjects and prepares student to incorporate them into their team project

# Team Project



- Students are assigned a team and design project prior to the academy. Approximately 10 Students, 1 Guide, and 1 Project expert.
- This allows students to gain base knowledge, to interact with the subjects, and demonstrate learning through discovery and experience.
- There is a virtual meet and greet before the academy, 8 hours working time during the academy, and an open house for teams to present their project at the end.



# Learner Centered with Engagement as Our Goal

“Tell me and I forget. Teach me and I remember.  
Involve me and I learn.” ~ Benjamin Franklin

Contact Design Trainers:

Dan Backman

564-669-4742

[dan.backman@wsdot.wa.gov](mailto:dan.backman@wsdot.wa.gov)

Carol Winfrey

360-522-0603

[carol.winfrey@wsdot.wa.gov](mailto:carol.winfrey@wsdot.wa.gov)

