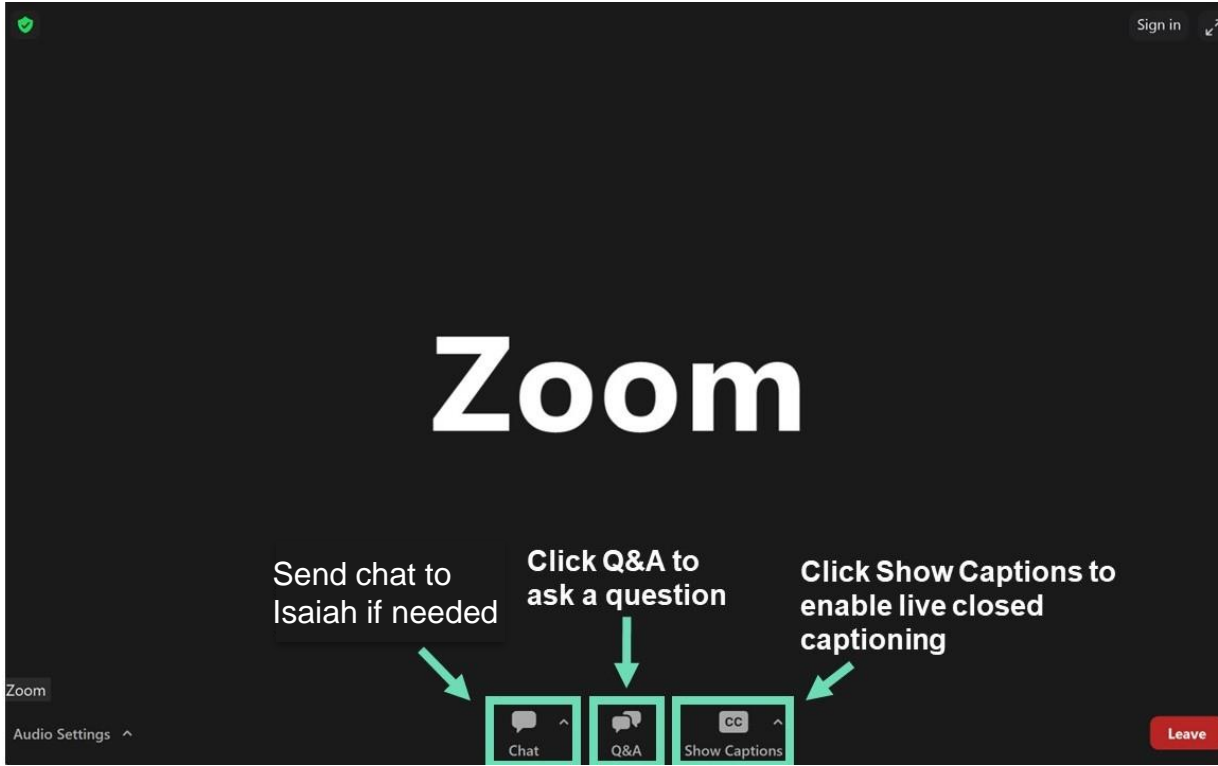


I-405/Brickyard to SR 527 Improvement Project

Quarterly public meeting

July 17, 2024

Zoom controls



Isaiah is our meeting host

Please use the chat feature to message Isaiah if you have any technical difficulties

Agenda

- Introductions
- Project overview
- Sound Transit updates
- Construction updates
- How to stay informed

Welcome & introductions

- **Evelyn Pao**, WSDOT, Project Director
- **Lauren Penning**, WSDOT, Communications Lead
- **Pat Prendergast**, Skanska, Director of Construction
- **Sarah Perrino**, Sound Transit, Senior Project Manager
- **Julie Moon**, WSDOT Communications
- **Elizabeth Guevara**, Sound Transit, Stride Communications
- **Isaiah Honick**, Skanska Communications
- **Laura Halady**, Skanska Communications

Poll questions

Before we start, we want to hear from you

Project overview

Project overview



Expand express toll lane (ETL) capacity.



Widen I-405 through the SR 522 interchange.



Add direct access ramps at the SR 527 and SR 522 interchanges.



Construct a new transit hub, build inline bus rapid transit (BRT) stations on I-405, and improve bus transit connections locally.



Improve connections for pedestrians and cyclists to transit and trails.



Improve local roadways and state routes.



Correct and repair fish barriers.

Groundbreaking, May 20



Bothell Mayor Mason Thompson speaks at project groundbreaking

Staff, including WSDOT Secretary Roger Millar and Sound Transit Interim CEO Goran Sparrman, break ground



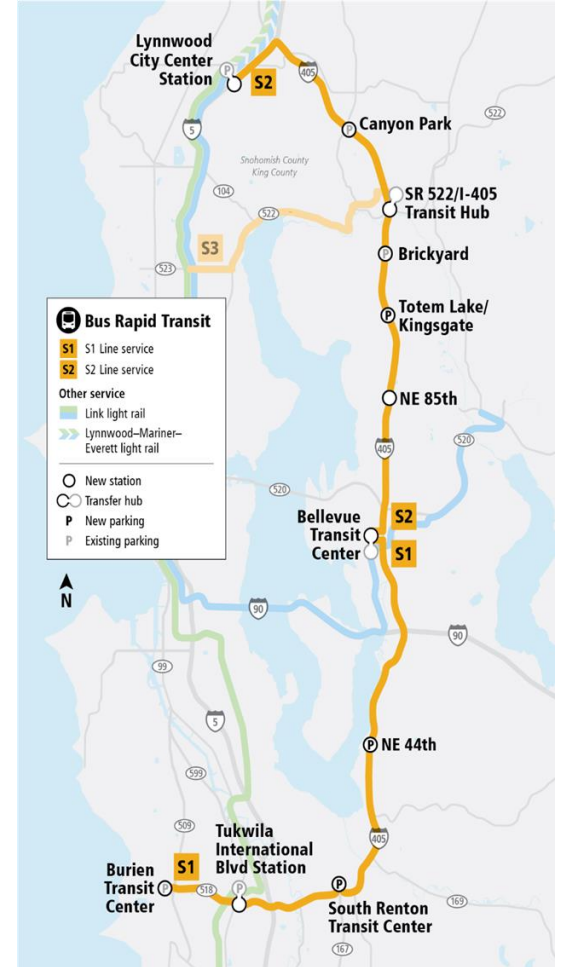
Stride

Bus Rapid Transit (BRT)

What is Stride?

Bus Rapid Transit infrastructure is designed for fast, frequent and reliable service

- Bus service connecting Lynnwood to Burien along the east side of Lake Washington
- Service every 10 minutes
- Roadway improvements to improve reliability, such as bus only lanes and transit signal priority
- BRT service will replace ST Express 522, 535, & 560 routes



Stride and I-405/Brickyard to SR 527 Improvement Project

- 3 new stride stations
- Direct access ramps to the express toll lanes (ETLs)
- Partial direct access at the I-405/SR 522 interchange and future Stride S2/S3 hub



Stride benefits

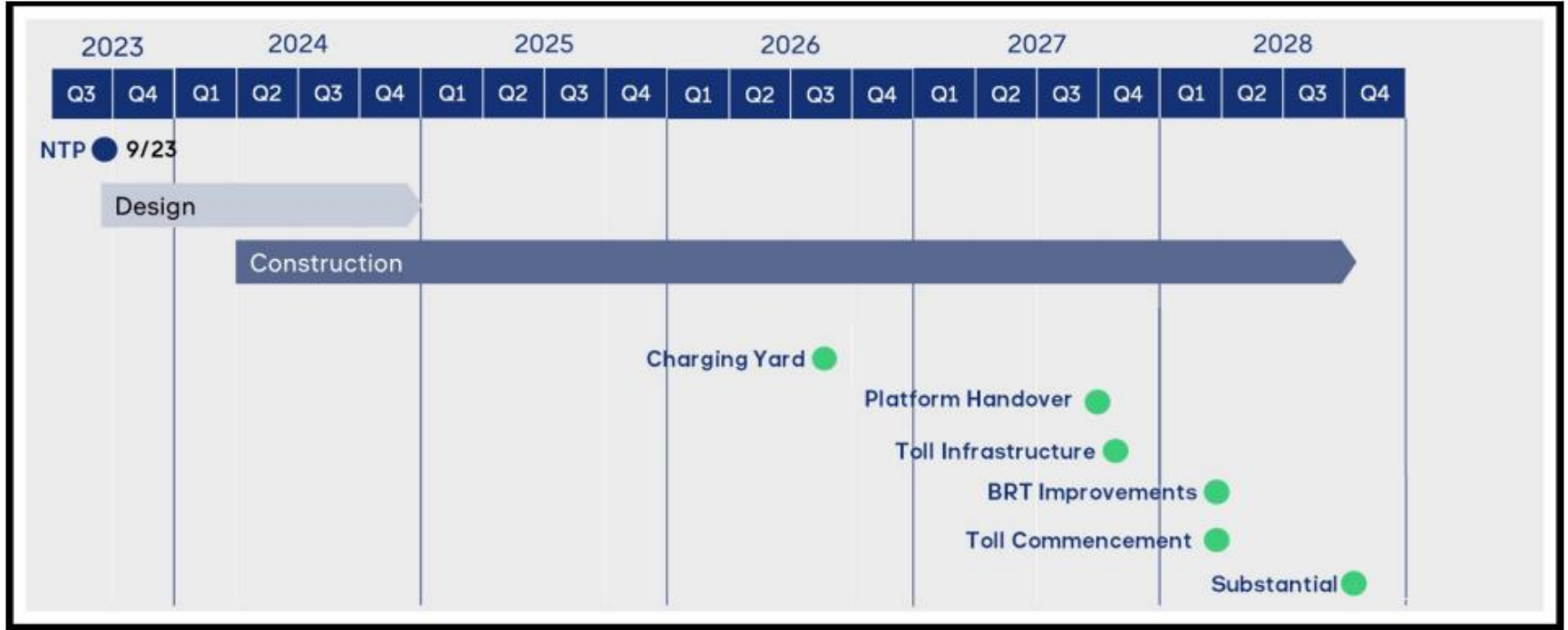
- Sheltered and comfortable stations.
- Faster boarding, off-board fare payment and all-door entry and exit.
- Real-time rider information signs
- Specialized buses.
- Bicycle accommodations.
- Improved access to stations for all modes including connecting transit services.



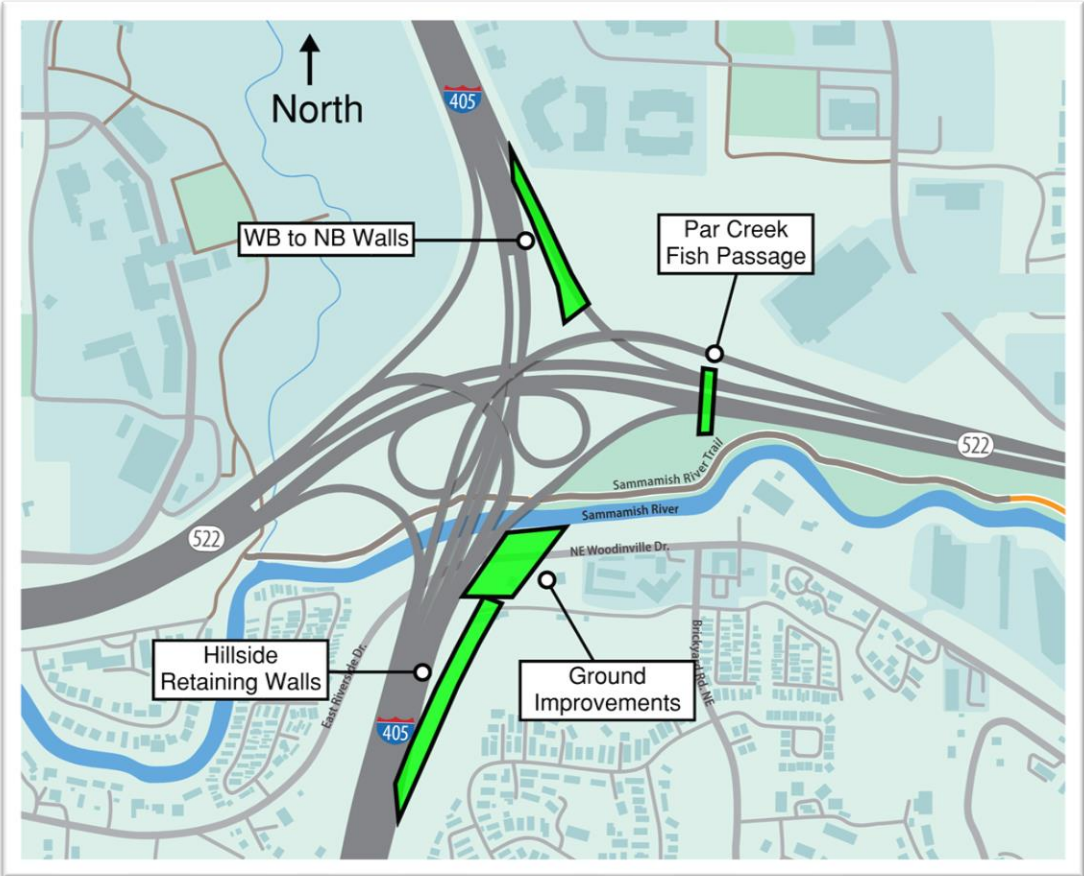
Aerial view of the future Stride in-line station on I-405.

Construction updates

Construction milestones



Work zone orientation:



Completed work

- Environmental prep
- Geotechnical surveys
- SR 522 traffic shift
- Site prep
 - WB SR 522 to NB I-405 on-ramp
 - NB I-405 to EB SR 522 off-ramp
 - Sammamish River area/Woodinville Drive



Looking north on I-405 toward the SR 522 interchange

Current work:

- WB SR 522 to NB I-405 on-ramp:
 - Mechanically strengthened earth wall
- NB I-405 to EB SR 522 off-ramp
 - Soldier pile and tieback wall
- Sammamish River Area/Woodinville Dr - utility relocation



Looking south, location at NB I-405 on-ramp to SR 522

Upcoming work:

I-405 asphalt overlay:

Aug/Sept Directional freeway closures
(weekends)

160th traffic switch: Sept

WB SR 522 to NB I-405 on-ramp:

Oct/Nov

- MSE complete/ramp shift

NB I-405 to EB SR 522 off-ramp:

- Wall piles and ground improvements complete
- Bridge construction start – pile installation starting **July 22**, bridge starting Oct/Nov

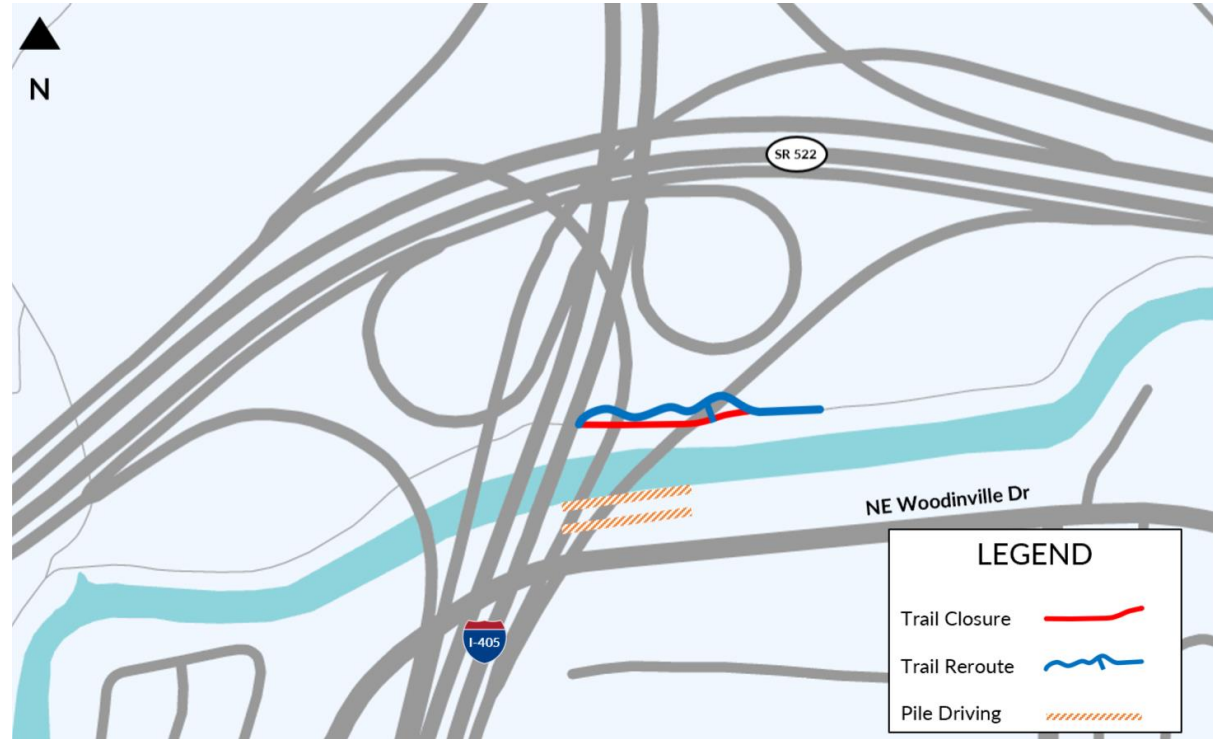


Looking west, the new Par Creek fish passage under SR 522

Upcoming work continued:

Sammamish River Trail Area - Woodinville Drive:

- Utility relocation: Complete
- Reaction pile and structural stabilization start
- Drilled shaft start
- Trail re-route started **August**



How we're reducing impacts to the community

Minimizing noise

- Noisy work is completed during the day unless lane closures are required.
- During night work, noisy work is conducted earlier in the evening shift when possible.
- Equipment is selected for reduced noise levels.
- Vehicles use an ambient backup alarm versus the loud, audible backup alarms.
- Dumping trucks are prohibited from slamming tailgates while dumping.

Reducing exhaust

- Equipment is prohibited from idling longer than 5 minutes.

Lowering light from work zones

- Generators, light plants, and towers are set back from property lines and homes to minimize light and noise impacts on homes.

How to stay updated on the project

How we're keeping communities and partners informed

- Quarterly project updates (October 2024)
- Mailed materials and information
- Briefings, meetings and events
- Email and website updates
- Poster and flyer distribution
- Project toolkits



Stay informed by subscribing to email updates.

Updates include:

- Closures
- Lane shifts
- Night or potentially impactful work
- Changes in work hours
- Construction milestones

How to stay updated



General project questions and email list:

I405SR167Program@wsdot.wa.gov

Email us to be added to the Brickyard to SR 527 Project email list.



Construction email:

info@405Brickyard.com



Visit our website:

<https://bit.ly/BY-to-SR-527>



Call our construction hotline:

425-354-3232

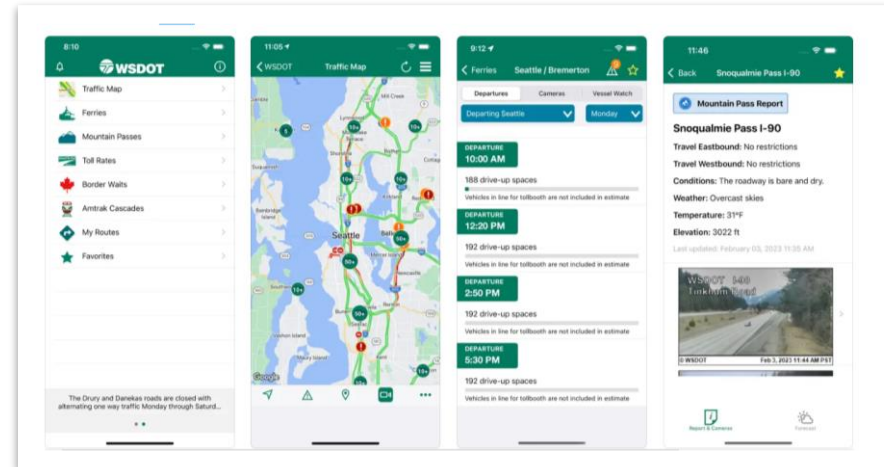
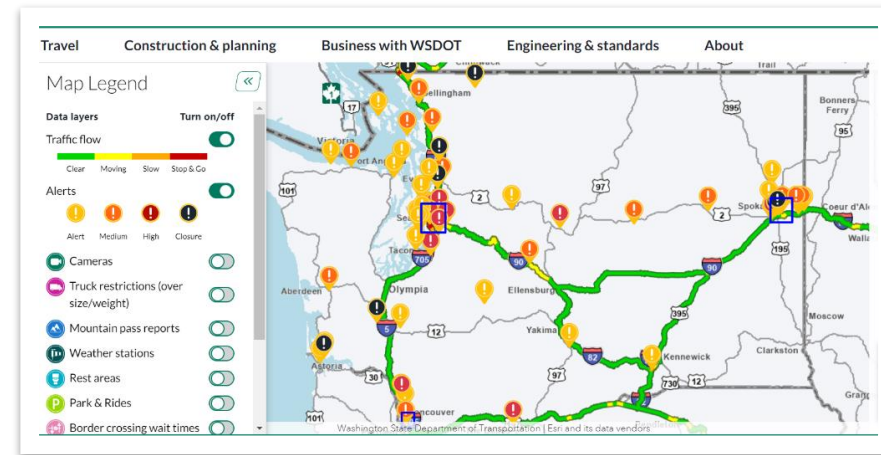
Monitored weekdays, 8 a.m. to 5 p.m.



Scan the QR code
with your phone to
visit our website.

For the most up-to-date travel impacts:

- Visit our real-time travel map: <http://wsdot.com/travel/real-time>
- Download the WSDOT mobile app: Just type in the term "WSDOT" in [Google play](#) or [the App Store](#) to download the WSDOT app.



Questions, comments, or concerns?

Submit a question via Zoom Q&A window

- Keep questions focused on this project
- Submit your questions as short, complete sentences
- We will answer as many questions as possible by 12:00 p.m.

Questions specific to an individual situation can be difficult for us to answer now. You can call or email our team after the meeting to get these types of questions answered. We are here to help!

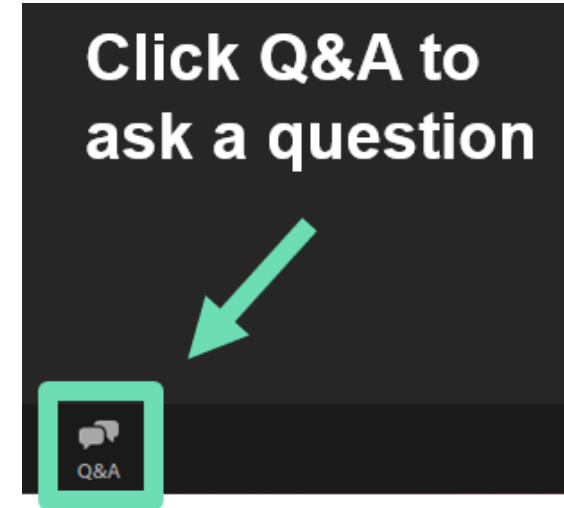
 425-456-8585 (general program info.)
425-354-3232 (project hotline)



1405SR167Program@wsdot.wa.gov



<https://bit.ly/BY-to-SR-527>



Questions?