

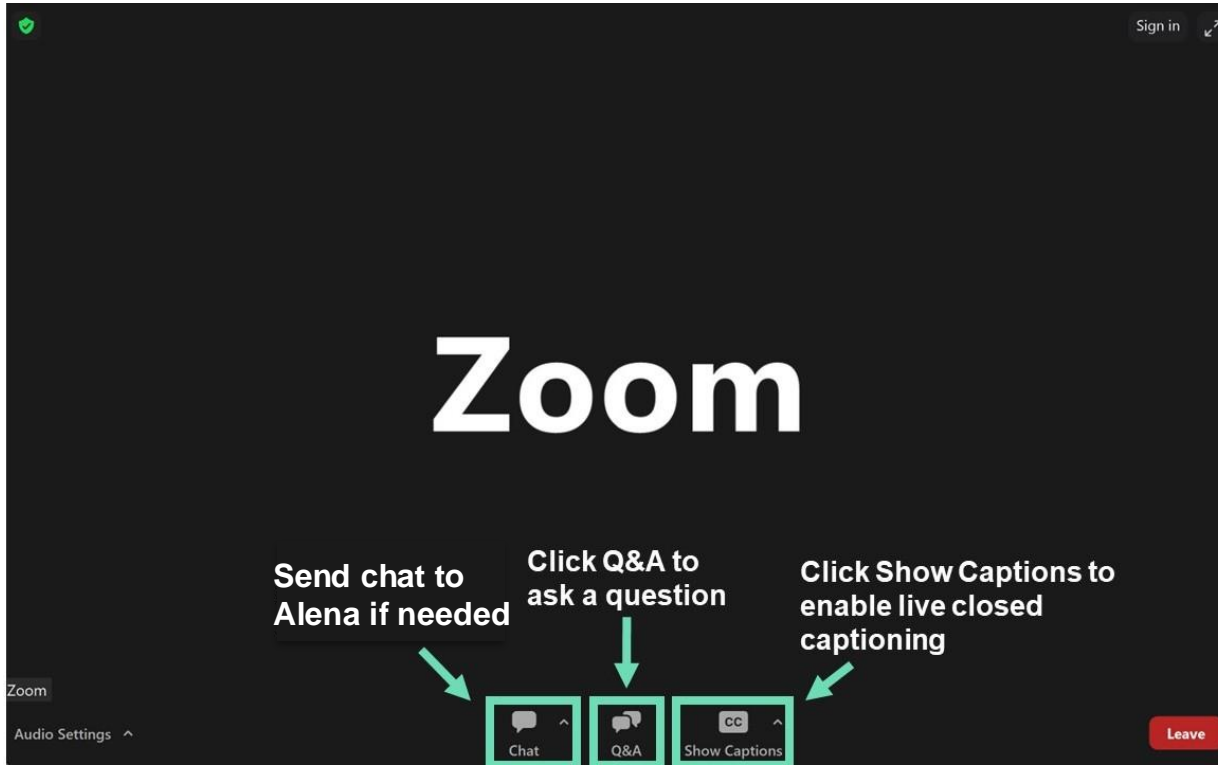
I-405/Northeast 85th Street Interchange and Inline BRT Station Project

Construction updates

Sept. 24, 2024

This meeting is being recorded. The recording will be sent to meeting registrants via email and posted on the project webpage.

Zoom controls



Alena is our meeting host

Please use the chat feature to message Alena or call her if you have any technical difficulties:

425-224-2423

Welcome & introductions

- **Darcy Edmunds**, Meeting Facilitator, Graham Communications
- **Chris Cooper**, Graham Construction Management
- **Steven M. Beadle, PE**, WSDOT Project Engineer
- **Sarah Perrino**, Sound Transit Senior Project Manager
- **John Starbard**, City of Kirkland Deputy Director of Public Works Department

Agenda

Project overview and benefits

Bus Rapid Transit (BRT)

Construction updates

- Schedule (2024 – 2026)
- What's completed or in progress? What's next?
- What you can expect during construction

Keeping the community informed

- Outreach efforts
- Real-time travel map and app

Stay in touch!

Questions?

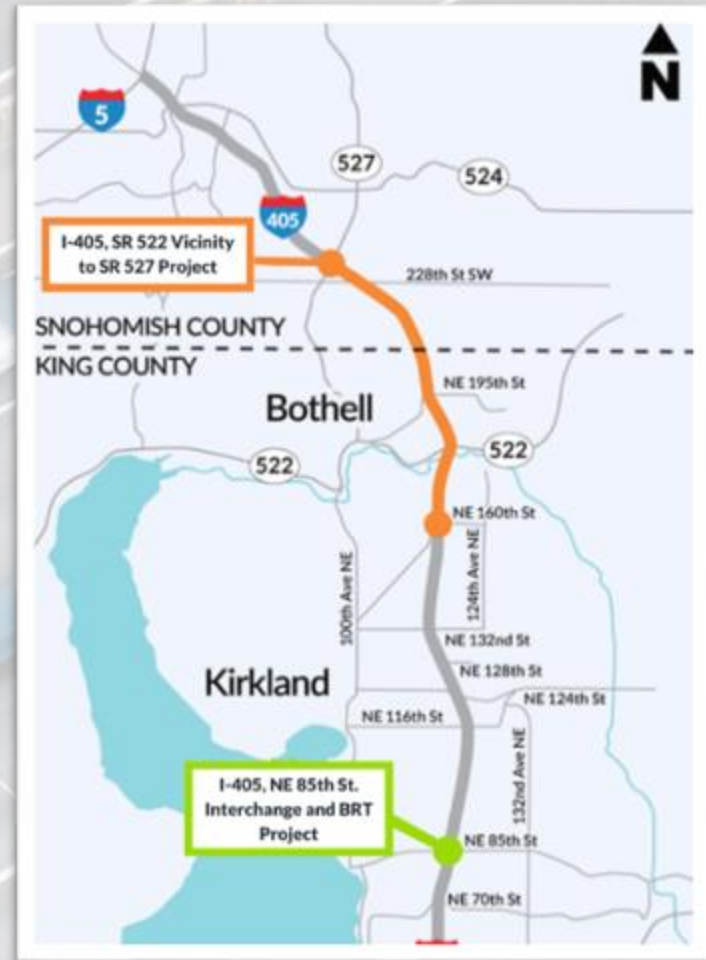
Poll questions

Before we start, we want to hear from you

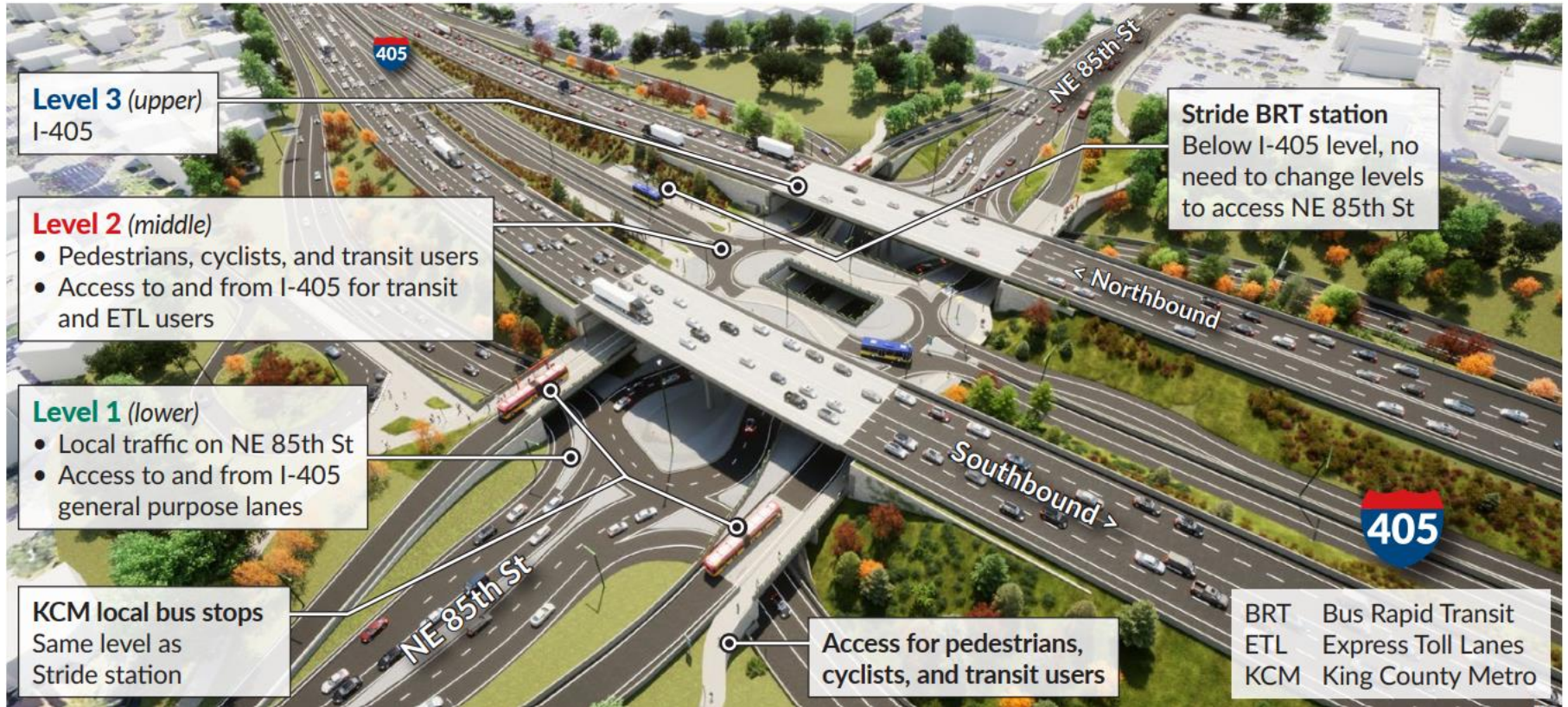
Project overview



Coordinated Projects on I-405 Corridor



The future of Northeast 85th Street



Northeast 85th Street and I-405



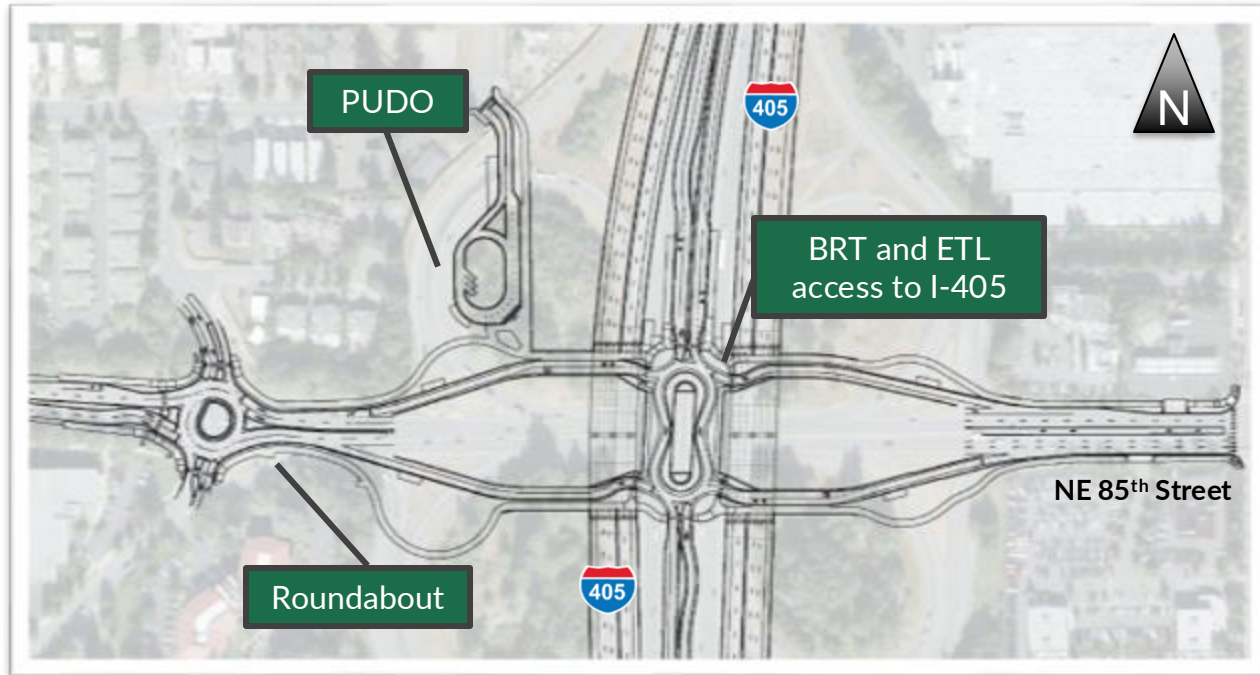
Level One

- Below existing Northeast 85th Street elevation
- Passenger and truck traffic

Level Three

- At existing I-405 elevation
- Freeway traffic

Bus Rapid Transit, Express Toll Lanes, and Pedestrians



The new middle level is at the existing NE 85th St elevation and includes:

- Access for Bus Rapid Transit (BRT), Express Toll Lanes (ETL)
- The Pick-Up-Drop-Off (PUDO)
- New roundabout
- Access for people who walk, bike, or roll

Stride

Bus Rapid Transit (BRT)

Program updates

Key openings

- Lynnwood Link Extension
 - Start of Service on Aug 30th
 - Four new stations
 - Two will be future BRT stations:
 - Lynnwood Transit Center
 - Shoreline South/148th

Upcoming procurements:

- Partnership with the City of Kirkland Shared Path & Arterial Projects – To Advertise Q4 2024
- Bus Base North - To Advertise Q4 2024



Partners across the region gathered at the Lynnwood City Center for a ceremonious ribbon cutting for the start of service on the Lynnwood Link extension

Program status

Stations, shelters, furnishings, systems:

- General Contractor Construction Manager (GCCM), Hoffman Construction Co., procured to complete design.
- Construction to begin in late 2025

S3 – SR522/Bothell

- 100% Design Complete, Advertise in Q1 2025

S1 & S2 – I-405

- 90% Design Complete on ST Delivered Work

Battery Electric Bus Fleet

- Manufacturer Selected and Ordered

Bus Base North

- Construction Advertised Q4 2024



Construction updates

Project schedule

Schedule updated September 2024. Subject to change.

Near completion:
December 2026

Design

February 2023 – June 2024



Early Construction

August 2023 – January 2024



★ We are here

All traffic to new alignments

Phase 5



Phases 3 and 4

85th traffic to direct access alignment



Phase 2

I-405 traffic on new alignment



Phase 1

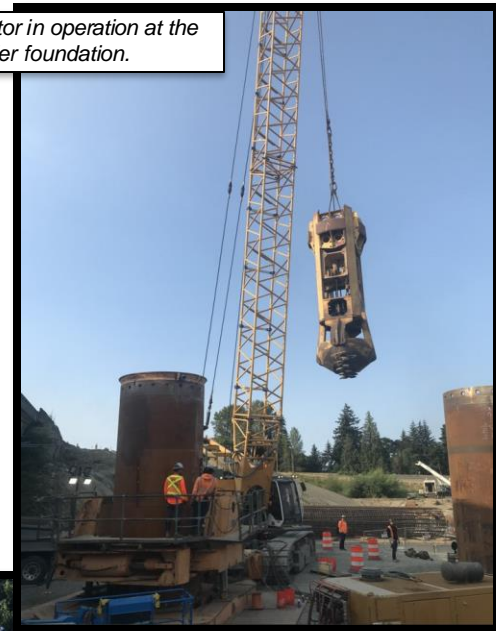
Existing traffic alignment



Completed construction activities

- **Utility Relocation:** Completed relocating the 24" waterline from NE 85th to NE 87th.
- **NE 87th Street Restoration:** Completed NE 87th asphalt paving.
- **Fill Wall Construction:** SB bridge abutment walls complete and ready for concrete placement.
- **Shaft and Column Installation:** Installed shafts and columns along Northeast 85th Street under I-405.

Grab hammer and oscillator in operation at the SB I-405 center pier foundation.



Crews preparing to pushing waterline pipe through the I-405 casing.

In progress construction activities

- **Mainline I-405 Bridges:** Completing center pier column and pier cap construction as well as north and south abutments. Set girders in November and prep the deck for paving.
- **I-405 Roadway Construction:** Complete the remainder of the fill walls for mainline I-405 construction. Begin roadway grading and storm line installation
- **DA Level Bridges:** Continue abutment construction and prep for girders. Set girders in November and prep for deck paving.



Current lane alignment

Northeast 85th Street lanes shifted until 2025



- Crews restriped Northeast 85th Street into a new lane alignment to accommodate I-405 column work.
- Sidewalk path is maintained on north side of Northeast 85th Street.
- Left turn lanes remain same length.
- Will be in place until early summer 2025.

Construction activities

Fall 2024 / Winter 2025 Overview



Ongoing: Weeknight single-lane closures of Northeast 85th Street; one lane open in both directions



November 2024: Two full weekend closures of Northeast 85th Street with detours



February 2025: Full closures of Northeast 85th Street with detours

Construction activities

Ongoing Northeast 85th Street weeknight single-lane closures

- Weeknight single-lane closures of Northeast 85th Street will continue.
- Closures are necessary for the safety of the traveling public and to accommodate additional space requirements for large equipment.

Upcoming construction activities

Northeast 85th Street weekend closures in November

- Two weekend full closures of Northeast 85th Street are anticipated in early November.
- Closures are necessary for the safety of the traveling public and to accommodate equipment for placing large bridge girders.



Example photo of girder setting

Upcoming construction activities

Northeast 85th Street weekend closures in February; I-405 traffic lanes to shift

- Crews will shift I-405 lanes over to the new bridge structures during a weekend closure of Northeast 85th Street.
- *More details to come.*

What to expect during construction

- Weekday, weekend, and night work
- Lane closures and reductions
- Northeast 85th Street closures (partial and full closures)
- I-405 ramp closures
- Signed detours and flaggers
- Noise, dust, exhaust, and vibrations

Crews prepare foundation casing for the SB I-405 center pier.



Crews setting the SB I-405 abutment medalion.

How we're reducing community impacts

Minimizing noise

- Noisy work is completed during the day unless lane closures are required.
- During night work, noisy work is conducted earlier in the evening shift when possible.
- Equipment is selected for reduced noise levels.
- Vehicles use an ambient backup alarm versus the loud, audible backup alarms.
- All trucks on the night shift have bed liners to reduce impact noise.
- Horn honking for vehicle positioning is prohibited.
- Dumping trucks are prohibited from slamming tailgates while dumping.

Reducing exhaust

- Truck idle times are monitored, and engines must be shut off when not in use.

Lowering light from work zones

- Generators, light plants, and towers are set back from property lines and homes to minimize light and noise impacts on homes.

Stay in touch!

How we're keeping Kirkland informed



- Road signs
- Mailed materials and information
- Briefings, meetings, and pop-up events
- Email and website updates
- Quarterly project updates on Zoom
- Poster and flyer distribution
- Coordination and meeting with businesses near the project site

**Stay informed by
subscribing to email
updates.**

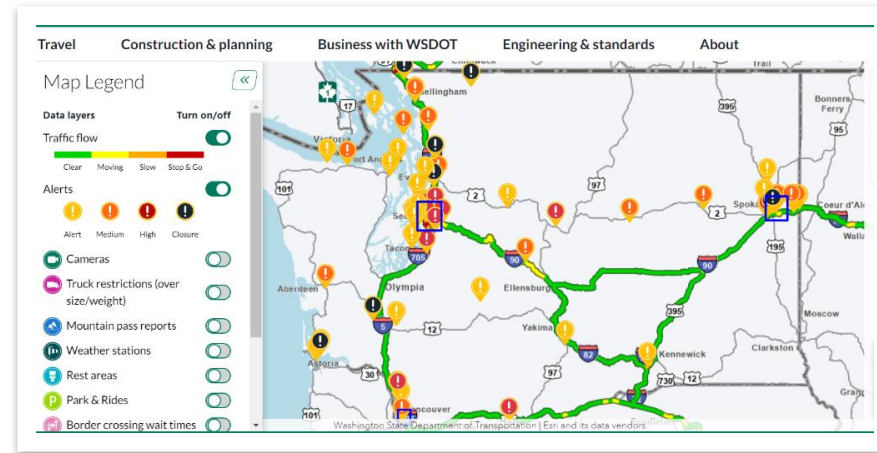
Updates include:

- Closures
- Lane shifts
- Nighttime or other potentially disruptive work
- Changes in work hours
- Construction milestones

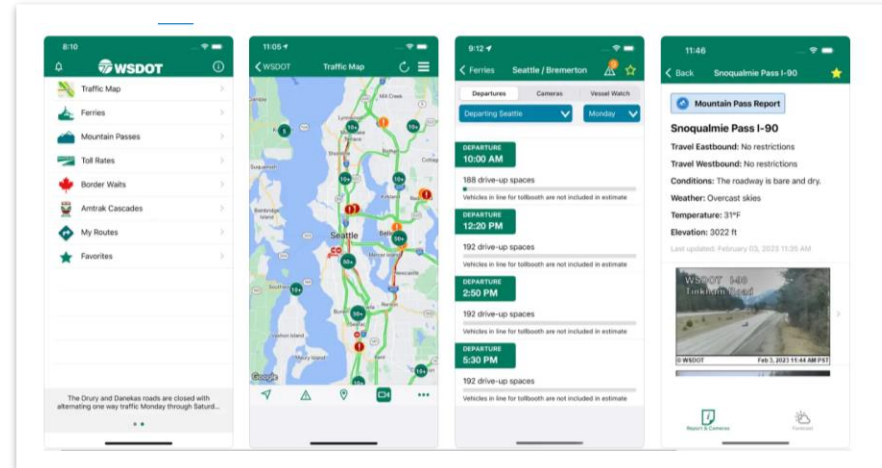
I405SR167Program@wsdot.wa.gov

For the most up-to-date travel impacts:

- Visit our real-time travel map:
<http://wsdot.com/travel/real-time>



- Download the WSDOT mobile app:
Just type in the term "WSDOT"
in [Google play](#) or [the App Store](#) to
download the WSDOT app.



How to stay updated



Email us:
I405SR167Program@wsdot.wa.gov

Email us to be added to the 85th project updates list.

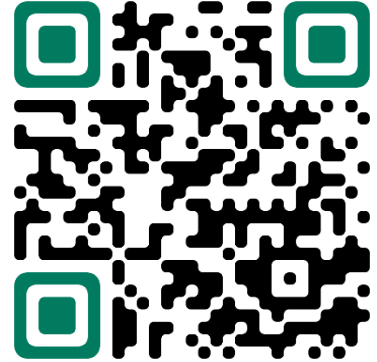


Visit the website:
[**bit.ly/85th-interchange-BRT**](https://bit.ly/85th-interchange-BRT)



Call our construction hotline:
425-224-2423

Monitored weekdays, 8 a.m. – 5 p.m.

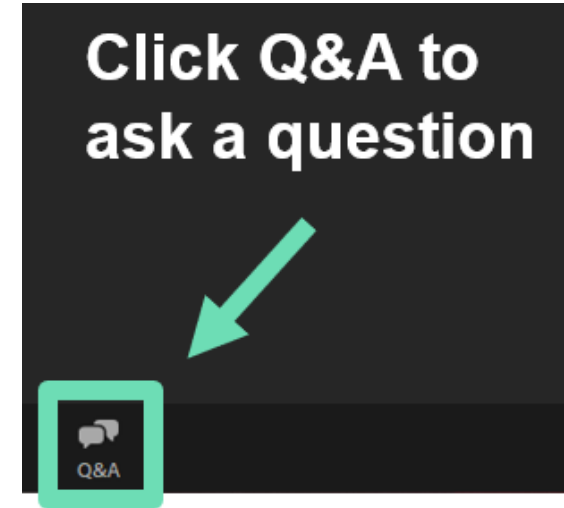


Questions, comments, or concerns?

Submit a question via Zoom Q&A window

- Keep questions focused on this project
- Submit your questions as short, complete sentences
- We will answer as many questions as possible by 1:30 p.m.

Questions specific to an individual situation can be difficult for us to answer now. You can call or email our team after the meeting to get these types of questions answered. We are here to help!



 425-456-8585 (general program info.)
425-224-2423 (project hotline)

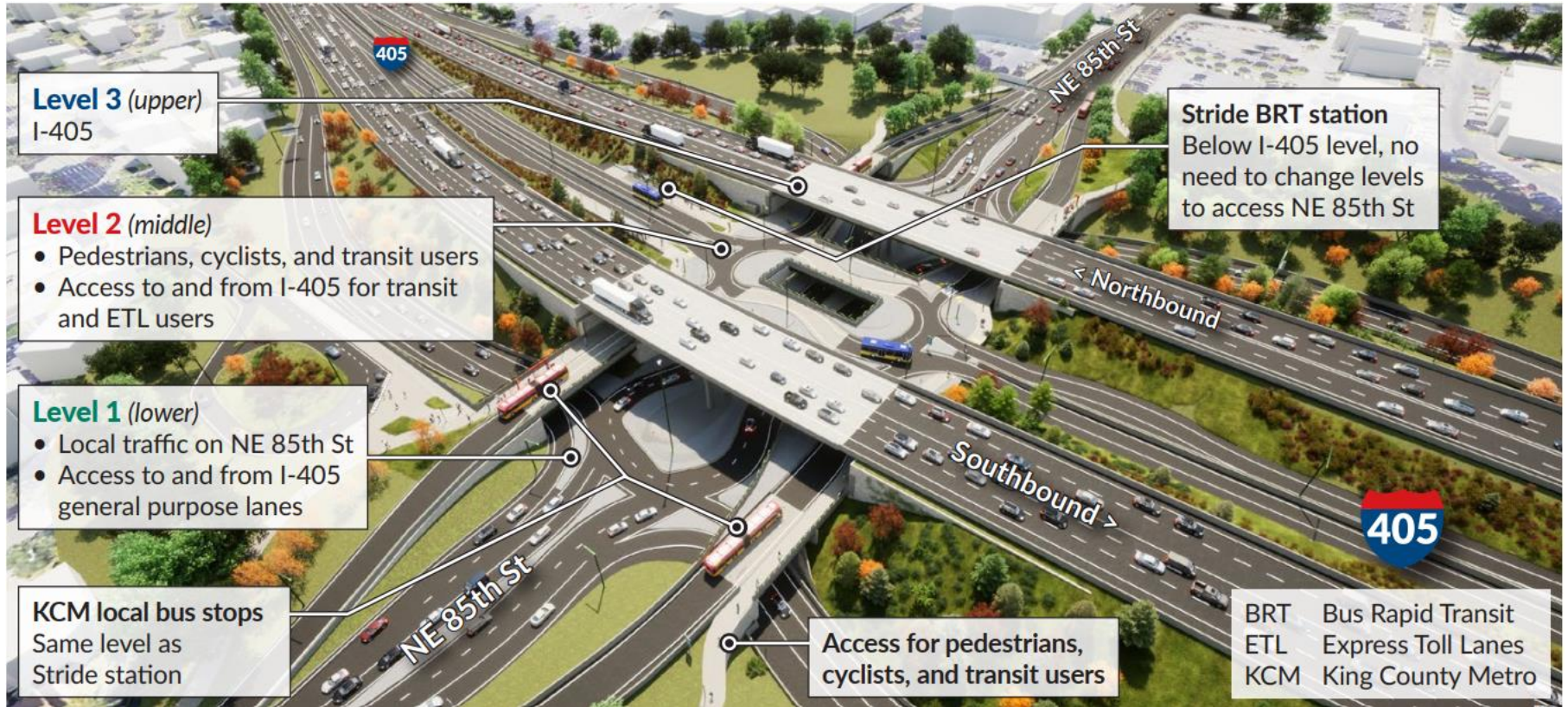


I405SR167Program@wsdot.wa.gov



bit.ly/85th-interchange-BRT

The future of Northeast 85th Street



How to stay updated



Email us:
I405SR167Program@wsdot.wa.gov

Email us to be added to the 85th project updates list.

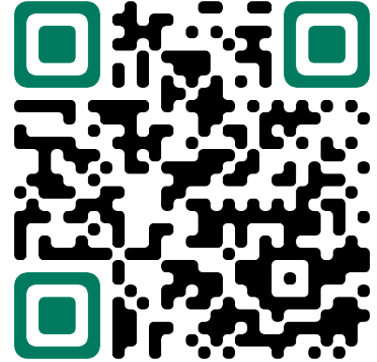


Visit the website:
[**bit.ly/85th-interchange-BRT**](https://bit.ly/85th-interchange-BRT)



Call our construction hotline:
425-224-2423

Monitored weekdays, 8 a.m. – 5 p.m.



**Thank you for
joining us today!**