



WSDOT Community Planning Portal

July 2025

Transportation and land use data application

WSDOT's Community Planning Portal (Portal) is an online application for state, regional, and local transportation planners to access transportation and land use data. The intent of the portal is to foster collaborative planning to achieve common goals, including the provision of a reliable, responsible, and sustainable transportation system for the public.

WSDOT has compiled the state transportation data we think will help local and regional planners, decision-makers, and citizens better understand the story of the state transportation system in their jurisdictions. We hope sharing this data will lead to a closer partnership so that, together, we can identify opportunities to operate our system more efficiently, manage demand, and, where appropriate, fund strategic capacity improvements.

Purpose of the Portal

The Portal makes it easy for local and regional planners to access the information they need from WSDOT to update their comprehensive plans and regulations, as required by the Growth Management Act. When planners are part of planning processes that affect the state system, the Portal can provide the data they need, no matter their level of GIS experience.

As WSDOT uploads more data layers relevant to planners, having one place to access the data makes it easier for this data to become useful for planners, engineers, and the public.

Having easy data sharing through the Portal presents an exciting opportunity for planners across Washington to better integrate local, regional, and state transportation and land use planning.

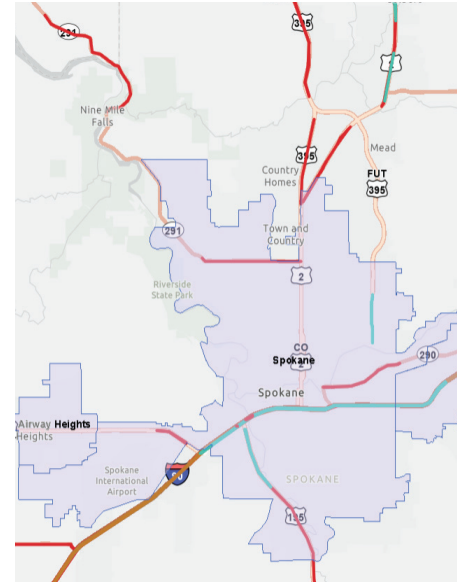
Through the Portal, you can:

- View and download statewide geographic data.
- Click on features to learn more.
- Save your map view as a PDF map.
- Temporarily add your own data.
- Add points, lines, polygons, and text to the map.
- Adjust the transparency of data layers.
- Measure distances.

Access and explore the Portal

You can access the Community Planning Portal by scanning the QR code on the right or through the WSDOT Online Map Center by typing the following in your web browser <https://wsdot.maps.arcgis.com>. Select Interactive Maps and find the Community Planning Portal. Once you see the application thumbnail, click on it to go to the application.

For background information and help, including how-to videos and scripts, and the WSDOT Community Planning Portal - Quick Start Guide, go to the WSDOT Community Planning Portal website at <https://wsdot.wa.gov/engineering-standards/planning-guidance/community-planning-portal>.



Screenshot of the Community Planning Portal with WSDOT project delivery plan and city limits selected in Spokane.



Scan to view the Community Planning Portal.

Questions? Contact your local WSDOT region planning office

[WSDOT Regions GMA Contacts](#)

<https://wsdot.wa.gov/engineering-standards/planning-guidance/land-use-transportation-planning>

For questions, suggestions, or ideas about the Portal, contact:

James Detke, Multimodal Planner;
Multimodal Planning & Data Division
james.detke@wsdot.wa.gov,
360-705-6906

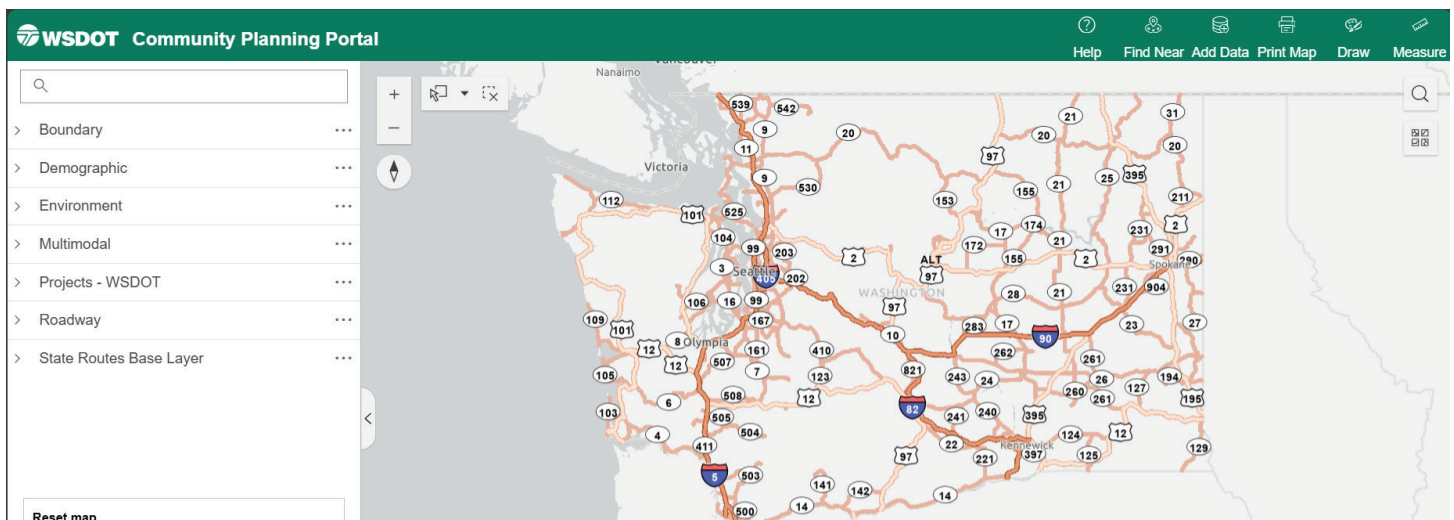


Information included in the Portal

WSDOT has developed a set of data about the state transportation system to assist local governments in completing the transportation element inventory required by the Growth Management Act. The Portal now includes more than 70 descriptive layers about the state transportation system.

Data layers in the Community Planning Portal

- Access control
- Active transportation Level of Traffic Stress (LTS)
- Airports - public, non-military
- Air quality - Department of Ecology
- Bike paths along state routes
- Bridge structures - on and under
- Bridge and tunnel inventory
- City limits
- Climate impact vulnerability
- Connecting Washington investments
- Corridor sketches
- County boundaries
- Crosswalks and curb ramps at state routes
- Environmental Health Disparities overall ranking
- Environmental mitigation sites
- Ferry routes
- Fish passage datasets
- Freight transportation system - truck, rail, waterway
- Functional class
- Highways of statewide significance (HSS)
- Lanes - lane Information, turn lanes, special use lanes
- Legal speed limits
- Level of service standard
- Metropolitan Planning Organization area boundary
- Mileposts with Google Street View
- National highway system routes (NHS)
- Noise walls, current and proposed
- Overburdened communities of Washington State
- Park and ride lots
- Pavement condition
- Pollinator habitat rankings
- Population centers
- Project delivery plan - current
- Railroads
- Railroad crossings - at grade
- Regional Transportation Planning Organizations (RTPO)
- Region boundaries - WSDOT
- Roadway width
- Sandy Williams Connecting Communities equity needs
- Scenic byways
- State routes
- Surface type
- Stormwater discharge points
- Toxic cleanup program sites - Department of Ecology
- Traffic counts - Annual Average Daily Traffic (AADT)
- Traffic sections - Annual Average Daily Traffic (AADT)
- Transit stops & routes
- Tunnels
- Urban growth areas
- U.S. bike routes in Washington
- U.S. Census ACS American Indian Reservations
- U.S. Census ACS off-reservation trust lands



Title VI Notice to Public It is the Washington State Department of Transportation's (WSDOT) policy to assure that no person shall, on the grounds of race, color, national origin, as provided by Title VI of the Civil Rights Act of 1964, be excluded from participation in, be denied the benefits of, or be otherwise discriminated against under any of its programs and activities. Any person who believes his/her Title VI protection has been violated, may file a complaint with WSDOT's Office of Equity and Civil Rights (OECR). For additional information regarding Title VI complaint procedures and/or information regarding our non-discrimination obligations, please contact OECR's Title VI Coordinator at (360) 705-7090.

Americans with Disabilities Act (ADA) Information This material can be made available in an alternate format by emailing the Office of Equity and Civil Rights at wsdotada@wsdot.wa.gov or by calling toll free, 855-362-4ADA(4232). Persons who are deaf or hard of hearing may make a request by calling the Washington State Relay at 711.