

I-405/Brickyard to SR 527 Improvement Project

Quarterly public meeting

September 24, 2025

Zoom Controls



Jaxon is our meeting host

Please use the Q&A feature to message Nephtalie if you have any technical difficulties

Agenda

- Welcome and introductions
- Project overview
- Sound Transit updates
- Construction updates
- How to stay informed

Welcome & introductions

- **Evelyn Pao**, WSDOT, Project Director
- **Lauren Penning**, WSDOT, Communications Lead
- **Karl Westby**, WSDOT, Traffic Lead
- **Pat Prendergast**, Skanska, Project Director
- **Paul Cornish**, Sound Transit Strategic Project Director, Bus Rapid Transit
- **Laura Halady**, Skanska Communications
- **Jaxon Woodfill**, Skanska Communications
- **Nephtalie Gonzales**, Skanska Communications

Project overview

Project overview



Expand express toll lane (ETL) capacity.



Widen I-405 through the SR 522 interchange.



Add direct access ramps at the SR 527 and SR 522 interchanges.



Construct a new transit hub, build inline bus rapid transit (BRT) stations on I-405, and improve bus transit connections locally.



Improve connections for pedestrians and cyclists to transit and trails.

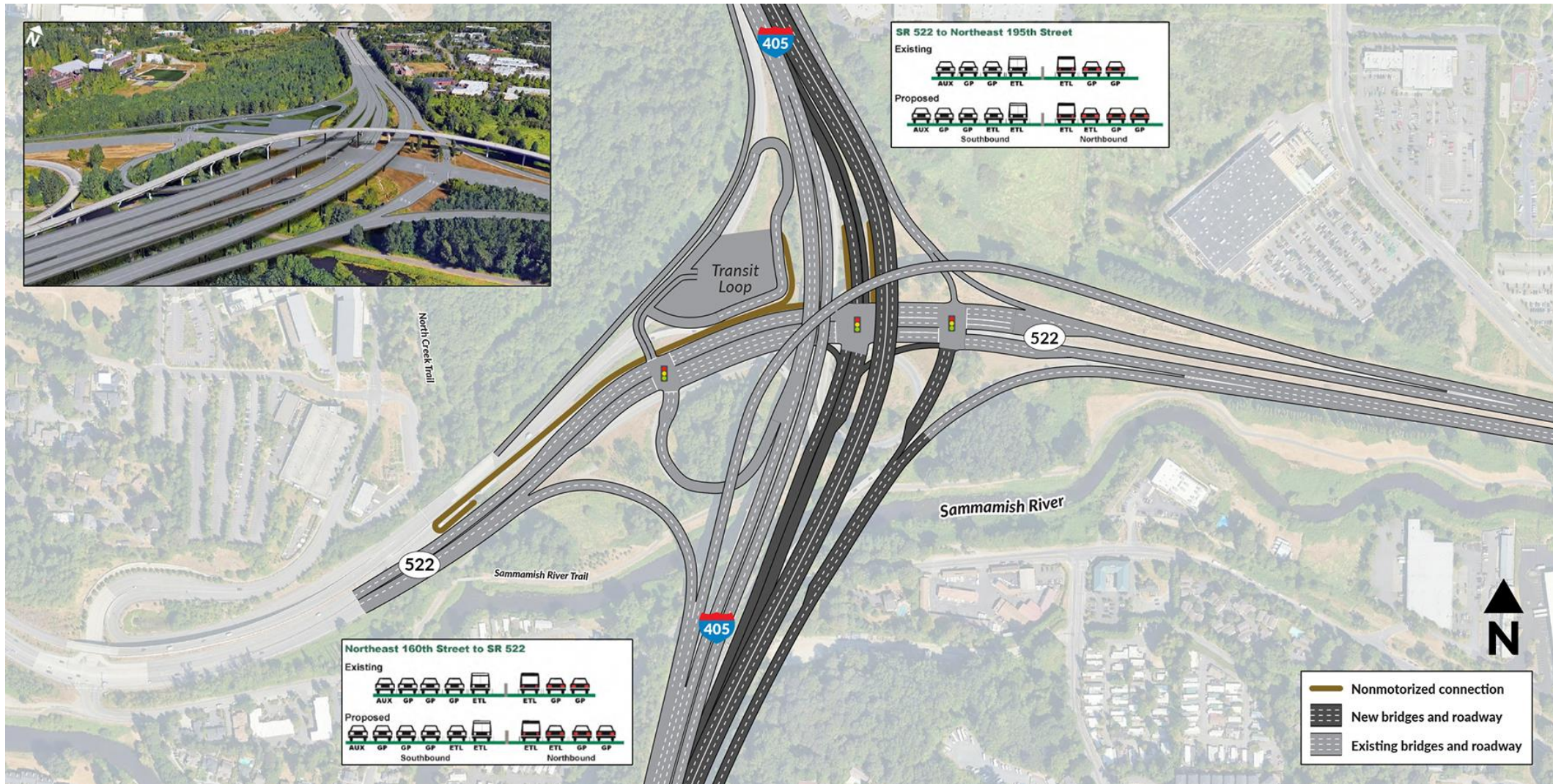


Improve local roadways and state routes.



Correct and repair fish barriers.

Future I-405/SR 522 Interchange



Stride

Bus Rapid Transit (BRT)

Agency updates

Key openings

- Federal Way Link Extension
 - Opening December 6, 2025

Awarded contracts

- S3 (Kenmore/Bothell)

System engagement

- Fall outreach will gather feedback on proposed ST Express service changes
- Second round of engagement which will include some routes serving Stride communities
- Changes planned for Fall 2026 (post-World Cup)

Stride online open house

- stride-brt.participate.online

Bus Operations and Maintenance Facility

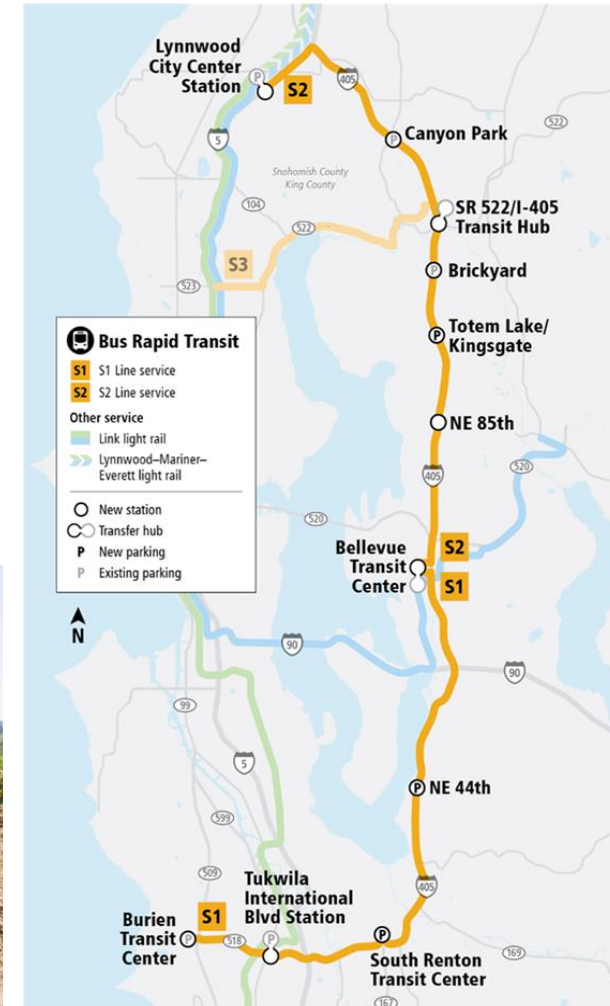
- Construction underway



Aerial view of Federal Way Downtown Station

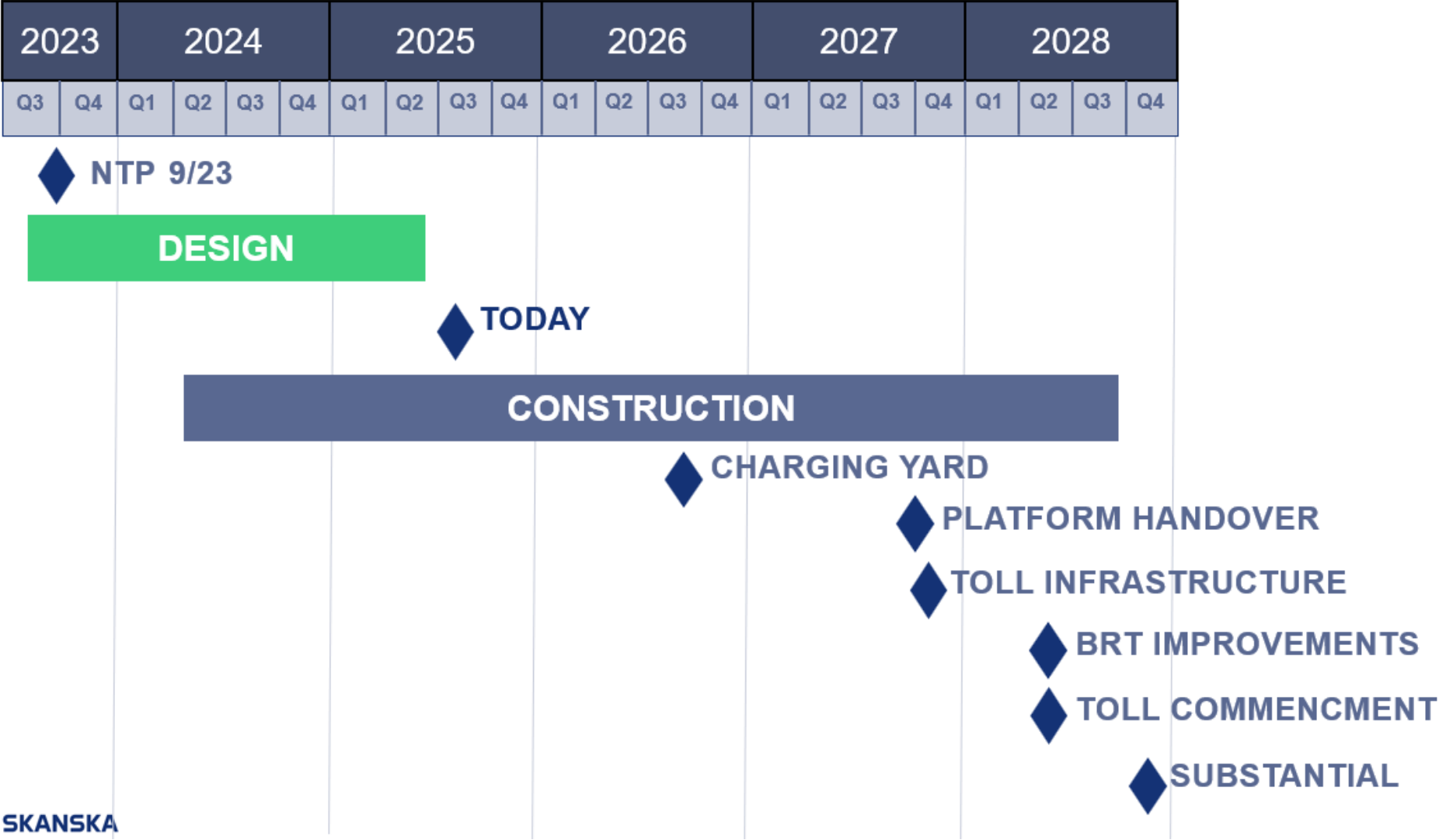


Groundbreaking celebration of Bus OMF



Construction updates

Construction milestones



SKANSKA

Project Progress

Juanita Creek fish passage

- Cleared work sites east and west side of I-405 for construction and tunnel work
- Sheet pile installation completed on the west portal
- Solder pile install and soil stabilization work on east portal to begin in October



Looking north at the Juanita Creek east and west portals along southbound I-405

Project Progress

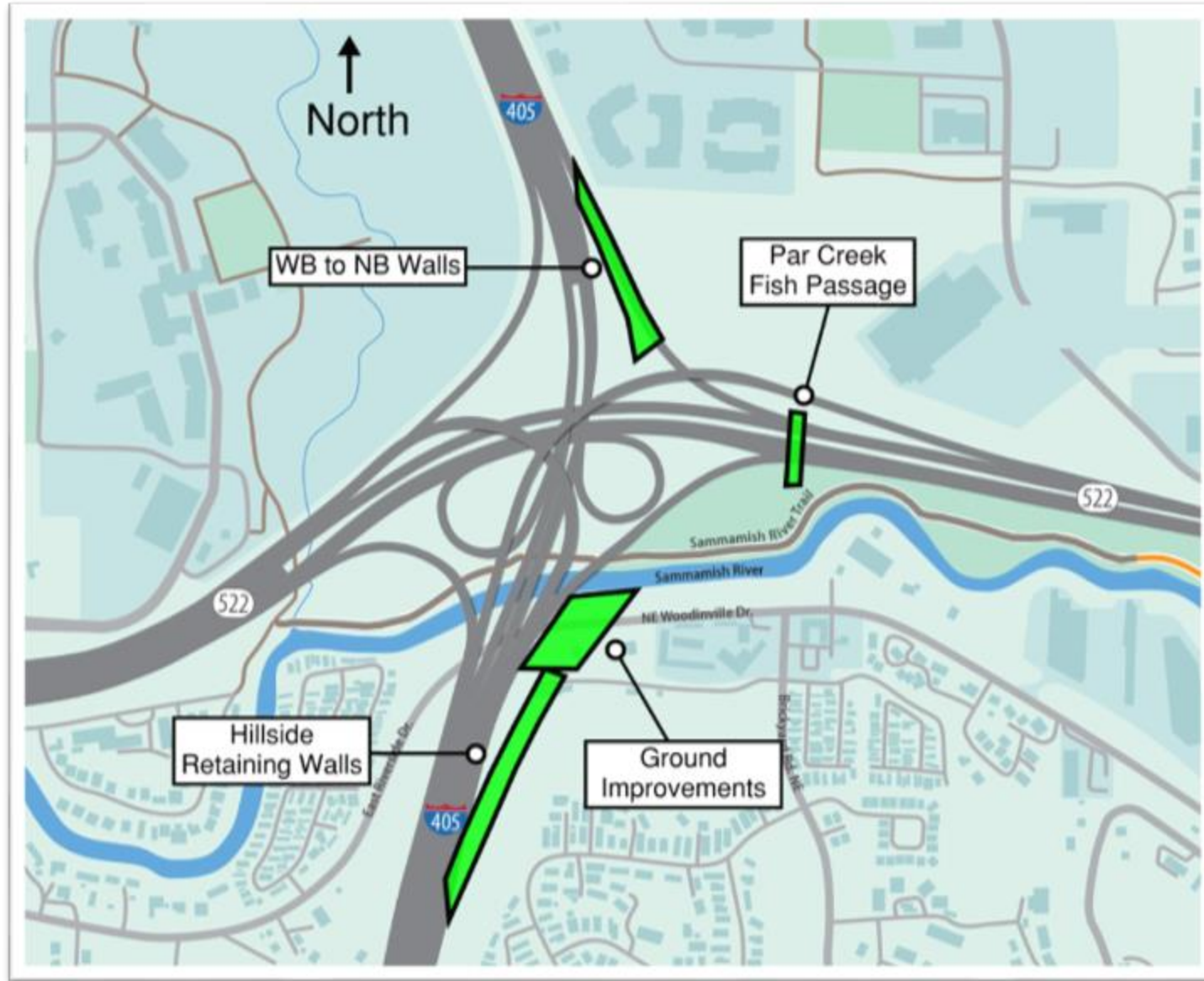
Northeast 160th/Brickyard Station Stride BRT West

- Station footing and abutment for the pedestrian bridge and adjacent noise walls under construction
- Bus loop entrance to Brickyard Park & Ride modified
- Ongoing work on ramp to southbound I-405 and northbound I-405 off-ramp to Northeast 160th Street



Looking at future Stride Brickyard Station on west side of I-405

I-405/SR 522 work zone locations



Project Progress

Northbound I-405 near SR 522 Interchange

- Hillside walls completed
- Restoration of existing slope and maintenance road nearing completion
- Drainage work completed
- New roadway paving – last week of September



*Looking northeast at tieback wall construction
along northbound I-405*

Project Progress

Sammamish River Area / Woodinville Drive

Northbound I-405 to eastbound SR
522 ramp bridge:

- Set bridge girders for ramp bridge June
- Bridge deck concrete poured



*Looking east, crews work on the south side of the
Sammamish River near Woodinville Drive*

Project Progress

Temporary trail detour

- Trail reroute around work zone, underneath the I-405/SR 522 interchange
- Brief trail closures no longer than 15 minutes and not to exceed 45 minutes total in a day



Pedestrian protection underneath the new I-405 northbound ramp to eastbound SR 522

Project Progress

Par Creek fish passage & SR 522

- Started work on 4th and final phase of Par Creek fish passage in September
- Shifted traffic on SR 522 again in September



Looking west at SR 522 after paving in phase 3 of the new Par Creek fish passage under SR 522

Project Progress

SR 527/Canyon Park

- Cleared and prepped work zone
- Pond retaining wall completed
- Southbound traffic shift completed
- Phase 1 southbound North Fork Perry fish passage work active



Looking east over I-405, just south of the SR 527 interchange

Upcoming work

Juanita Creek fish passage

Tunneling scheduled to start in November

Brickyard Station

- Northbound off-ramp and southbound on-ramp traffic shifts
- Traffic shifts on northbound and southbound I-405 to create space for median BRT Station work, end of October



Looking northwest at the east portal of the Juanita Creek fish passage at I-405

Upcoming work

Sammamish River Area near Woodinville Drive

Northbound I-405 to eastbound SR 522 ramp bridge:

- Roadway finishes completed
- Paving scheduled for the last week of September



Looking north at the new ramp bridge, new deck taking shape over Sammamish River near Woodinville Drive

Upcoming work

I-405 lane shifts near SR 527 through Sept/Oct

- North Fork Perry fish passage and Canyon Park Station traffic movements
- North of SR 527: traffic movements on I-405 to create work zone for Queensborough fish passage

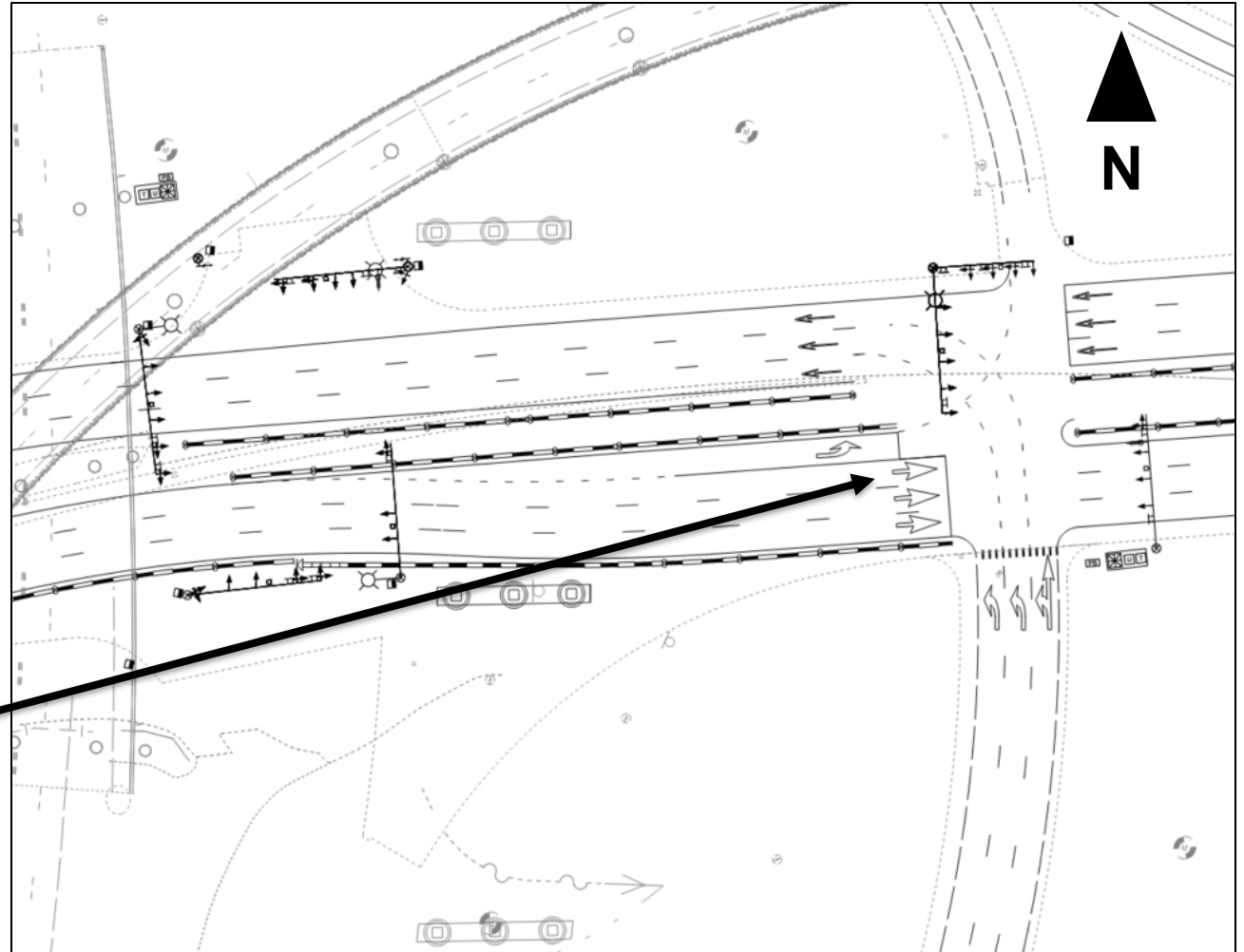


Looking north on I-405 where lane shifts will take place for future work on the Queensborough fish passage

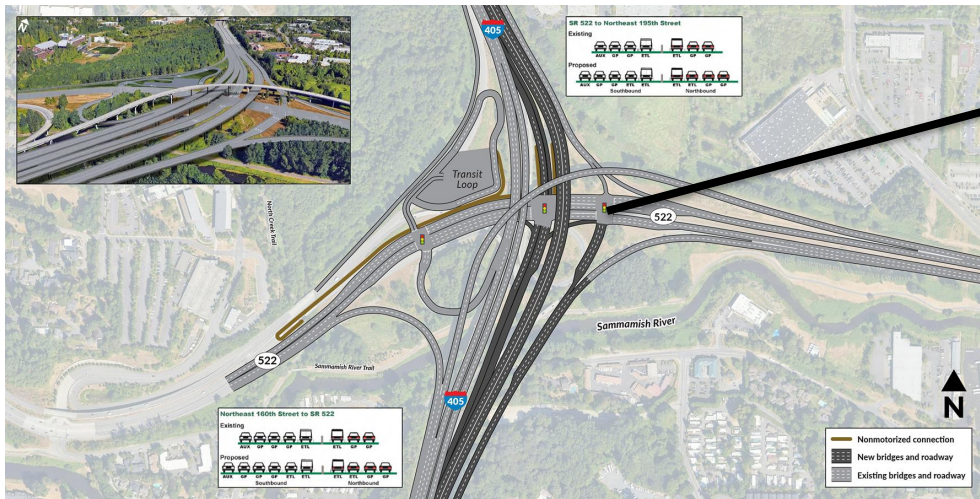
Upcoming Traffic Change

First new signalized intersection coming online mid-November

4-way intersection for drivers on both directions of SR 522 and entering/exiting I-405



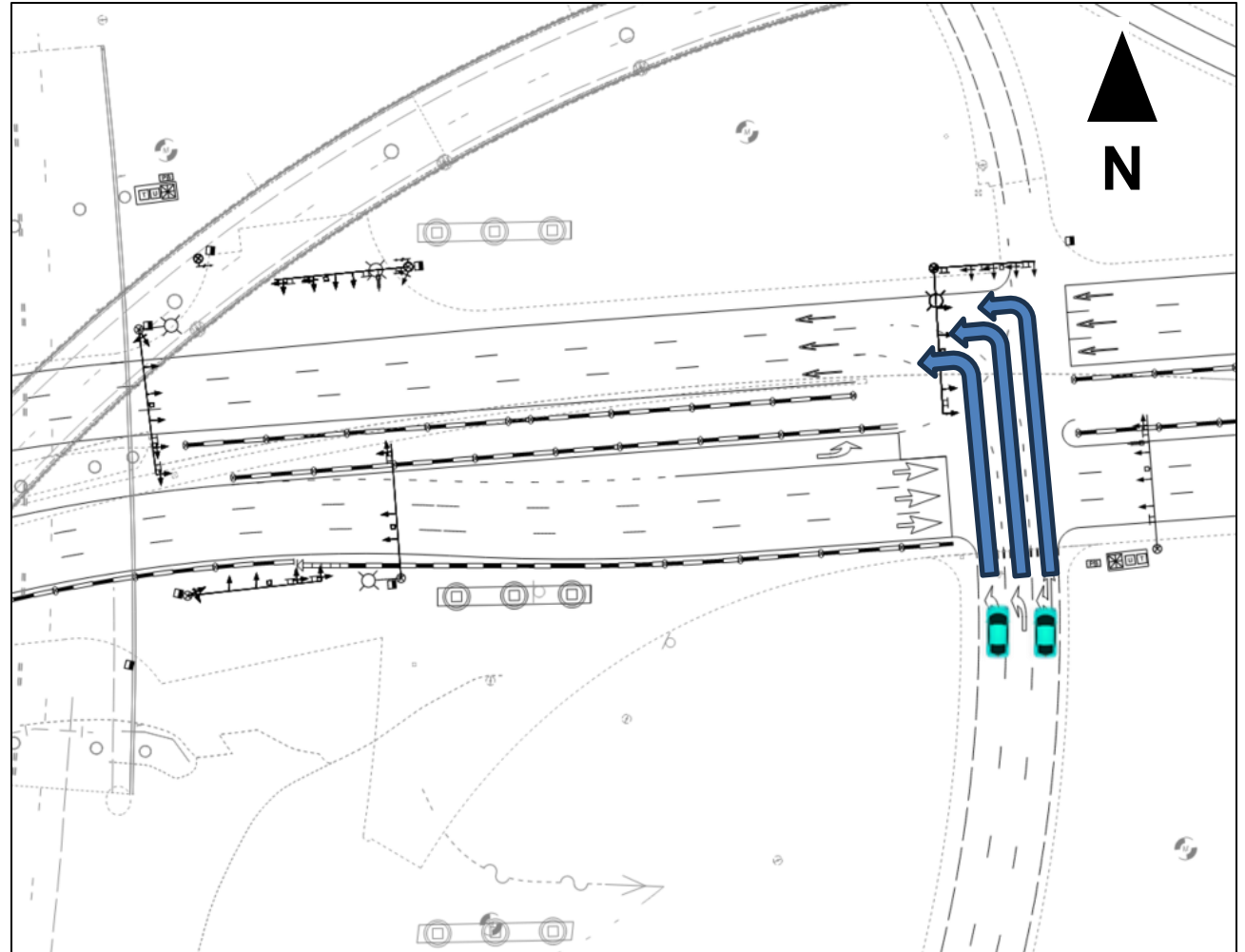
Overhead rendering of future intersection



Upcoming Traffic Change

First new signalized intersection coming online mid-November

Drivers connecting *from* northbound I-405 *to* westbound SR 522

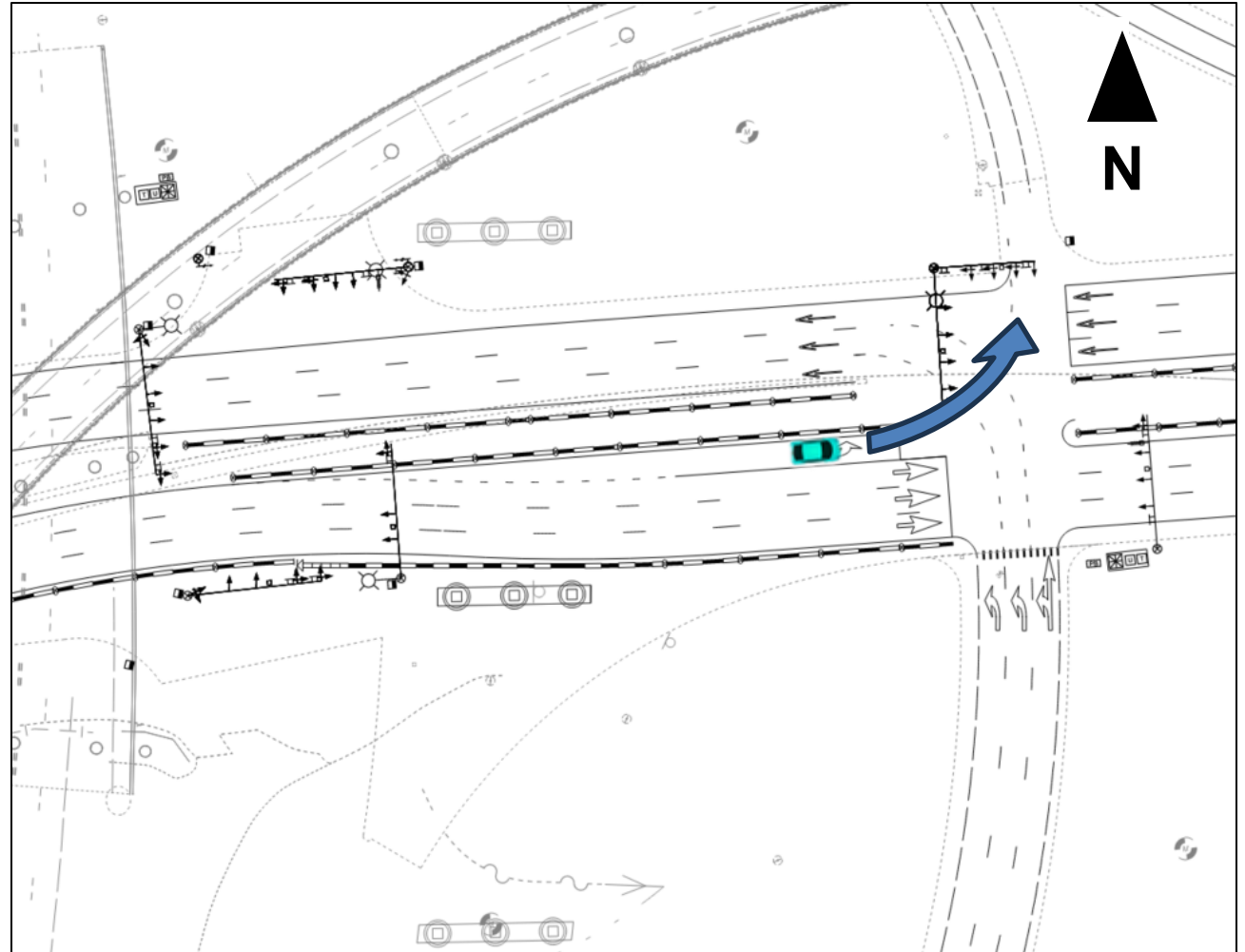


Overhead rendering of future intersection

Upcoming Traffic Change

First new signalized intersection coming online mid-November

Drivers connecting *from* eastbound SR 522 to northbound I-405

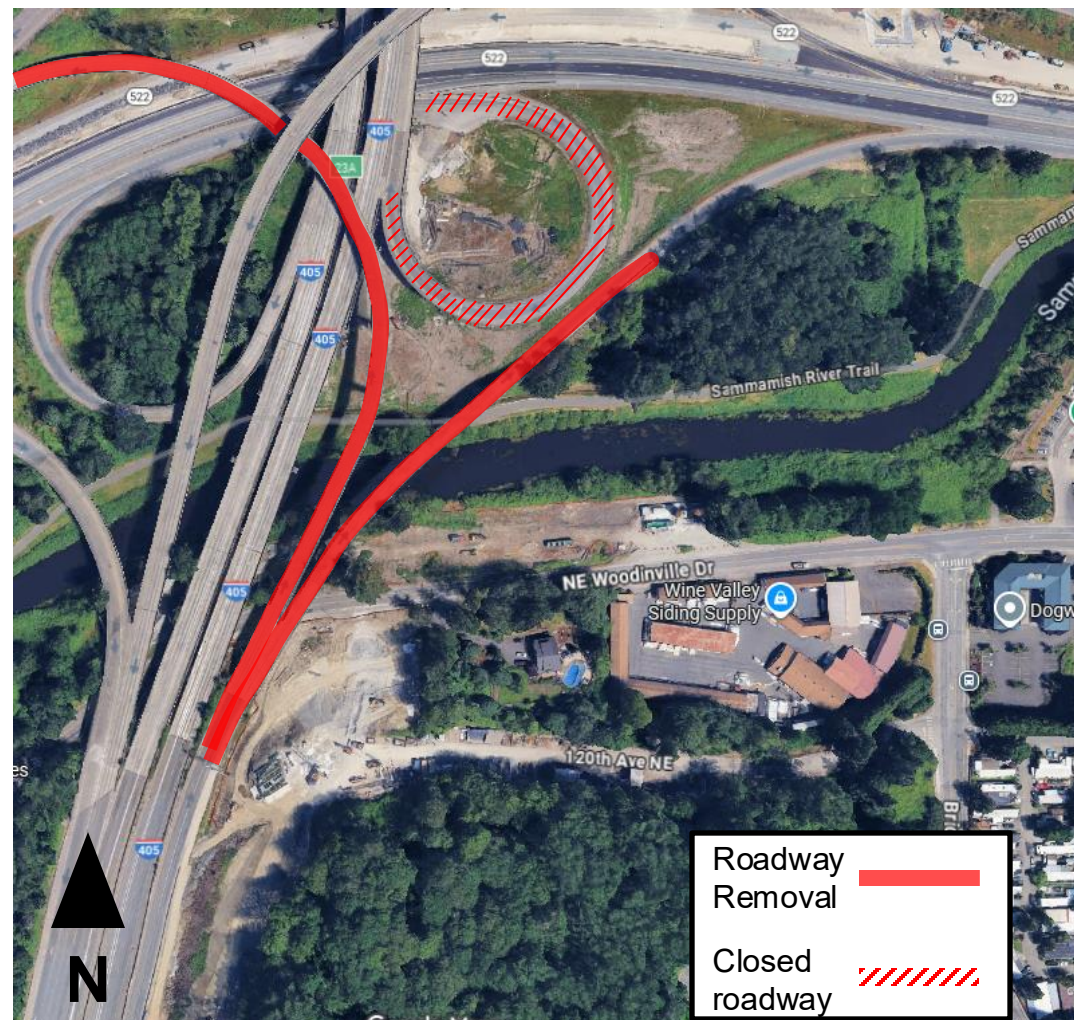


Overhead rendering of future intersection

Upcoming work

NB 405 to SR 522 bridge removals: Early 2026

- Crews will remove two bridges to create to widen I-405 and add direct access ramps
- Bridge removal will require full closures on SR 522 and I-405



Looking at the I-405/SR 522 interchange before construction started. The two ramp bridges that will be removed are highlighted in red

How to stay informed

How we're keeping communities and partners informed

- Quarterly project updates
- Mailed materials and information
- Briefings, meetings and events
- Email and website updates
- Poster and flyer distribution
- Project toolkits



Stay informed by subscribing to email updates.

Updates include:

- Closures
- Lane shifts
- Night or potentially impactful work
- Changes in work hours
- Construction milestones

How to stay updated



General project questions and email list:

I405SR167Program@wsdot.wa.gov

Email us to be added to the Brickyard to SR 527 Project email list.



Construction email:

info@405Brickyard.com



Visit our website:

<https://bit.ly/BY-to-SR-527>



Call our construction hotline:

425-354-3232

Monitored weekdays, 8 a.m. to 5 p.m.



Scan the QR code
with your phone to
visit our website.

Questions?